



Mandala Star App User Manual

Mandala Astral Star



Please read the manual before using the tools.

Version 3.0

Table of Contents

1	<i>Android Device Specification Requirement</i>	2
2	<i>Mobile Application End-User License Agreement</i>	3
3	<i>Application Download and Installation</i>	4
4	<i>Mandala Star Application Main Page Features</i>	7
5	<i>Application Setup</i>	8
5.1	<i>New User Setup</i>	8
5.2	<i>Application Activation</i>	9
5.3	<i>Tablet Bluetooth Connection Setup</i>	10
5.4	<i>Application Settings</i>	11
5.4.1	<i>Bluetooth Connection Setup:</i>	11
5.4.2	<i>General Setting</i>	12
5.4.3	<i>Mandala Dynamic Scan Setting</i>	13
5.4.4	<i>Light Alchemy Pulsar Setting</i>	13
5.4.5	<i>Application Activation Status</i>	14
6	<i>Mandala Astral Star</i>	16
6.1	<i>Library</i>	16
6.1.1	<i>Pattern/item Laser Light Color Selection</i>	17
6.2	<i>Pre Scan</i>	18
6.3	<i>Scan</i>	19
6.3.1	<i>Combine Scan</i>	20
6.3.2	<i>Multiple Scan</i>	23
6.4	<i>Preset</i>	25
6.4.1	<i>Basic Preset</i>	26
6.4.2	<i>Create Preset</i>	27
6.4.3	<i>Preset Play Mode</i>	28
6.5	<i>Online Presets</i>	31
6.5.1	<i>Download Preset</i>	31
6.5.2	<i>Upload Preset</i>	32

1 Android Device Specification Requirement

Mandala Star application can only be operated with **Android mobile phone or tablet.**

Minimum requirement:

Operating System:	Android OS
Android version:	Android 8.0 or higher
Others:	Bluetooth and WIFI function



2 Mobile Application End-User License Agreement

Please read this Mobile Application End-User License Agreement (“EULA”) carefully before downloading or using the Mandala Star App mobile application (“the application”). This EULA governs your use of the application, which will allow you to access Light Mandalas library and control Light Mandalas tools by your mobile device. Your use of the application indicates your consent to this EULA.

- 1. License.** Light Mandalas Co., Ltd. grants you a revocable, non-exclusive, non-transferable, limited license to download, install, and use the application for your personal and internal business purposes strictly in accordance with this EULA
- 2. Your Account.** Your use of the application requires that you have an account with Light Mandalas.
- 3. Changes to this EULA.** Light Mandalas reserves the right to modify this EULA. Your continued use of the application after Light Mandalas publishes notice of changes to this EULA indicates your consent to the updated terms.
- 4. No Included Maintenance and Support.** Light Mandalas may deploy changes, updates, or enhancements to the application at any time. Light Mandalas may provide maintenance and support for the application, but has no obligation whatsoever to furnish such services to you and may terminate such services at any time without notice. You acknowledge that Google has an obligation to furnish any maintenance and/or support services in connection with the application.
- 5. Acceptable Use.** You agree that you will not use or encourage others to use the application in a way that could harm or impair others’ use of the Mobile App.
- 6. Privacy.** Light Mandalas don’t collect your information from your application. Information inside the application will be private.
- 7. No Warranty.** Your use of the application is at your sole risk. The application is provided on an “As Is” and “As Available” basis. Light Mandalas expressly disclaims all warranties of any kind.
- 8. Suspension and Termination of the application.** Light Mandalas reserves the right to suspend or terminate your access to the application at any time.
- 9. Intellectual Property Rights.** In the event of a third party claim that the application, or your possession and use of the application, infringes third party’s intellectual property rights, Light Mandalas, will be solely responsible for the investigation, defense, settlement and discharge of any such intellectual property infringement claim.

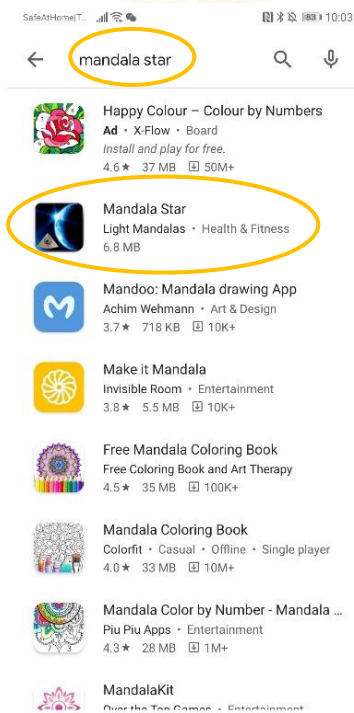
3 Application Download and Installation

User can download Mandala Star app from either “Google Play Store” or “Huawei AppGallery”

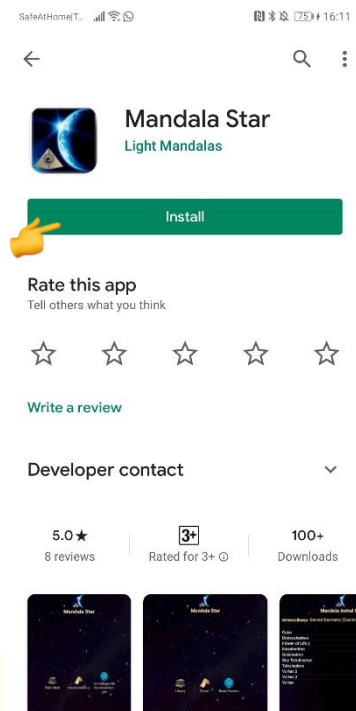
1. Open “Google Play Store” or “Huawei AppGallery” application



2. In the “Google Play Store” Search bar, type “Mandala Star”
In the “Huawei AppGallery” Search bar, type “星光曼陀罗”

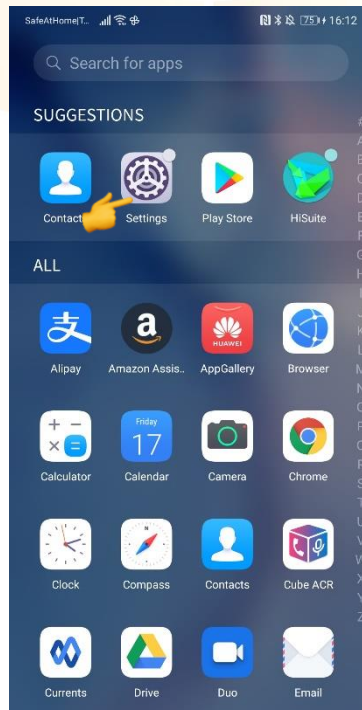


3. Tap on Install to install the app.

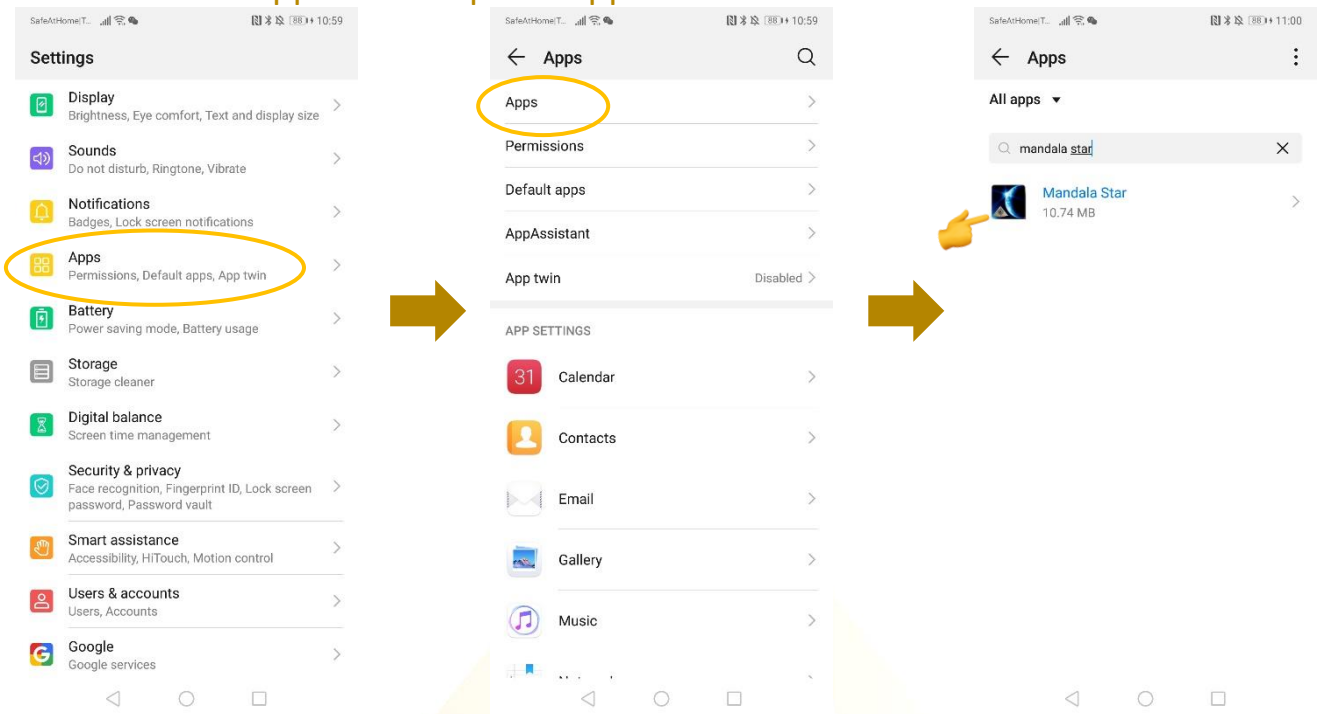


4. Allow application permission

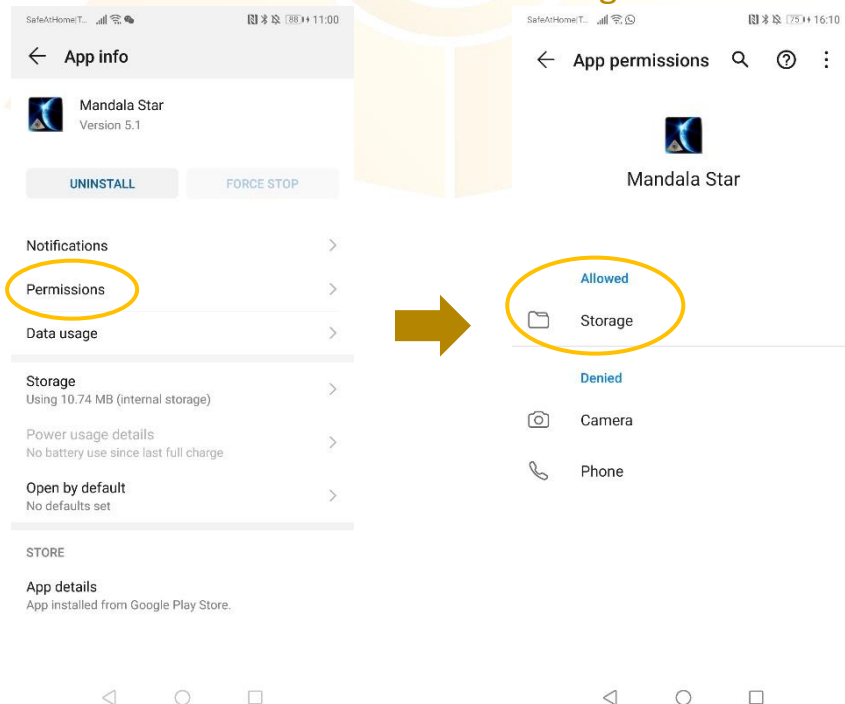
4.1 Go to Tablet Settings



4.2 Go to “Apps” then tap on “Apps” and search for “Mandala Star”.



4.3 Tap on “Permissions” then switch on “Storage”



4 Mandala Star Application Main Page Features



1 - 7 are different Light Mandalas devices programs. User can use specific program to operate specific device.

1. Mandala Astral Star

2. Mandala VN Star

3. Mandala Scan

4. Psycho Spiritual Integration – PSI

- PSI library has to be purchased prior to use this program
- Has to use with Mandala Scan.

5. Light Alchemy Pulsar

6. Gravity Plate

7. Mandala Wand

8. Information: Provide user the latest application update information.

9. User: Create new user profile

10. Setting: Application Setting – Bluetooth Device Pairing, Mandala Scan Setting, Light Alchemy Setting, Language setting, Database refresh and Activation Code Release

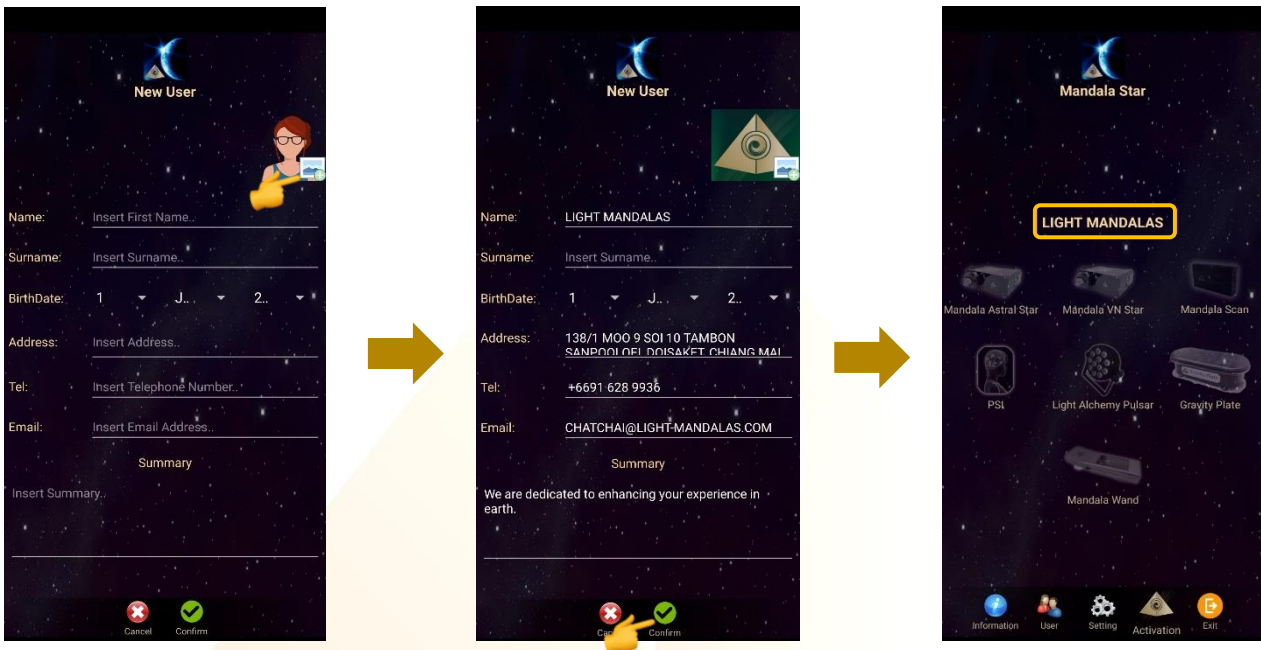
11. Activation: Activate the application with activation code

12. Exit: Exit from the application

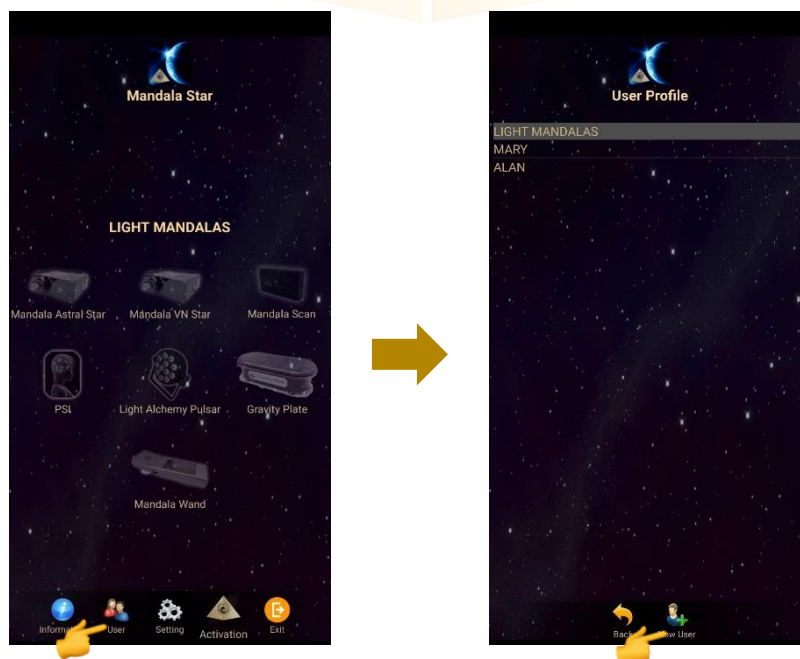
5 Application Setup

5.1 New User Setup

Once the app is opened, the “New User Create” will prompt out. Fill in the User profile and then tap on confirm to create new user profile. User also can insert their profile picture by tap on the picture insert. The user’s name will appear on the Home Page.



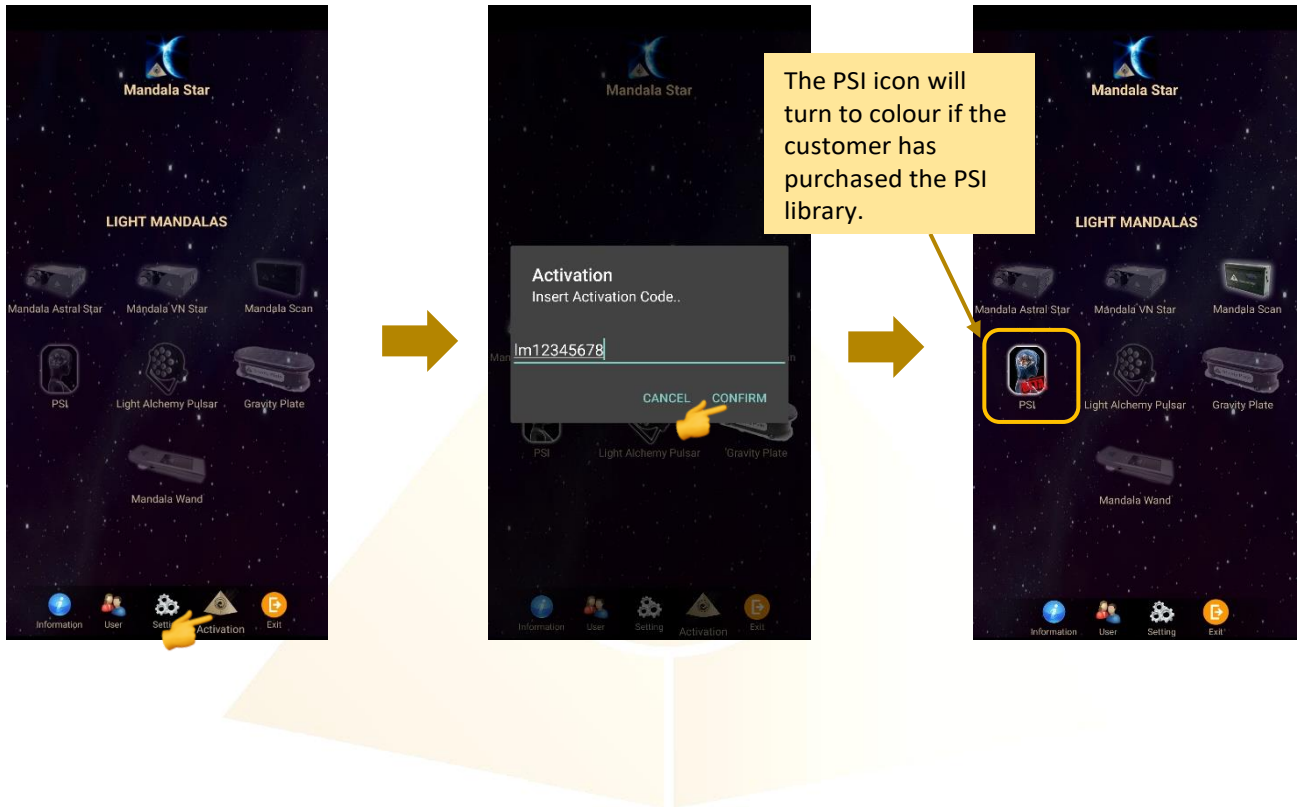
User can also add new user manually. User → New User



5.2 Application Activation

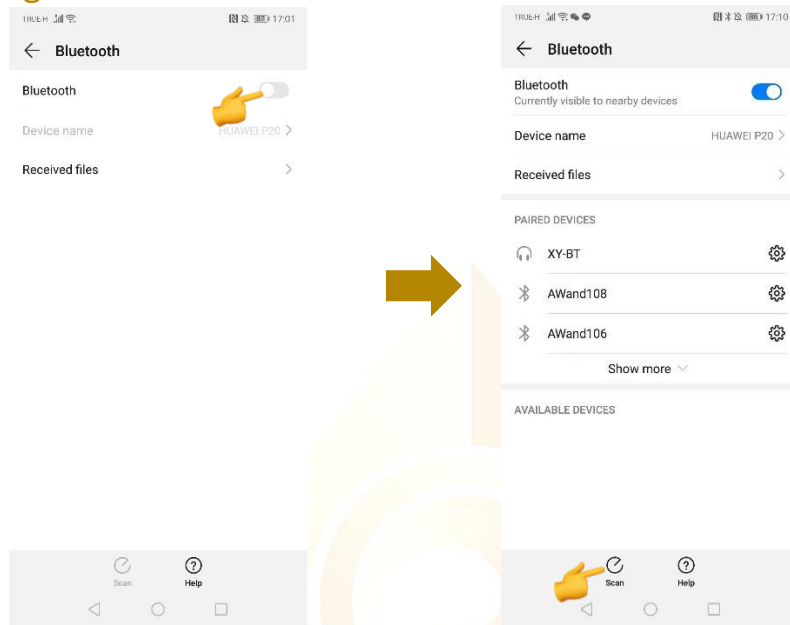
Tap on “**Activation**” to activate the application. Insert the activation code and tap confirm.

**User can request activation code from the dealer/local agent.*

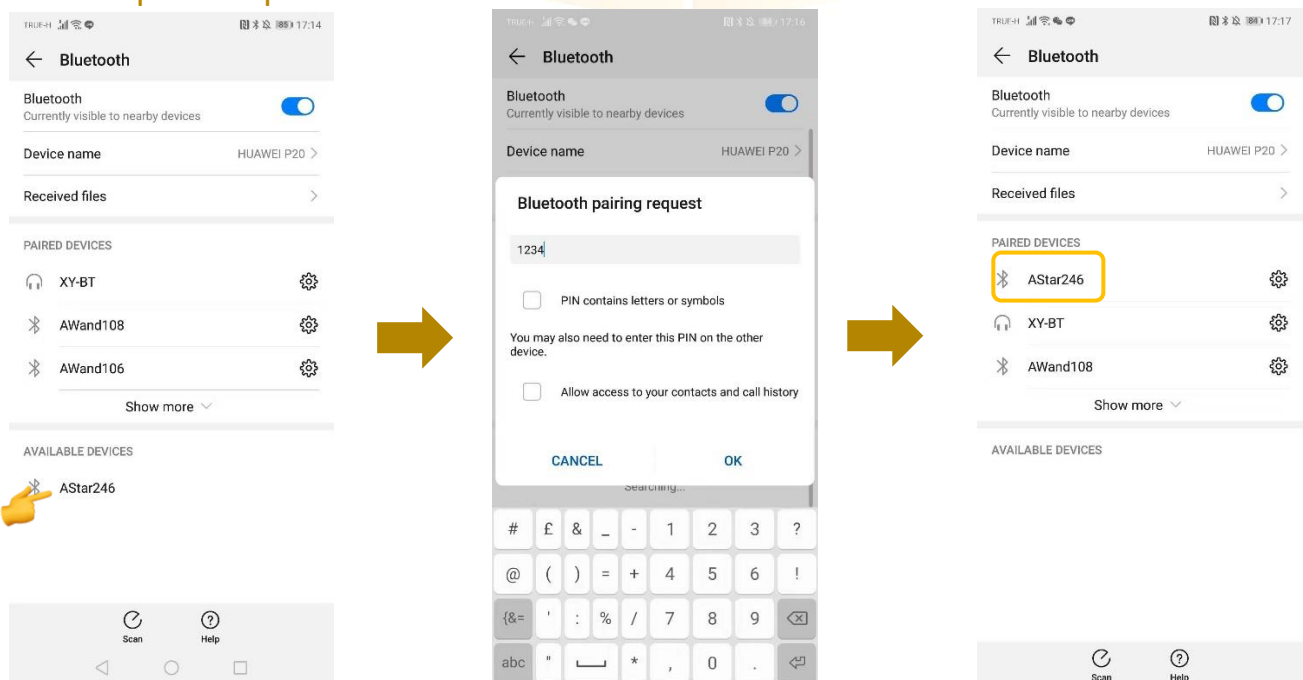


5.3 Tablet Bluetooth Connection Setup

1. In the android device, go to Setting then turn ON the Bluetooth and tap on scan to scan for the Light Mandalas device name.



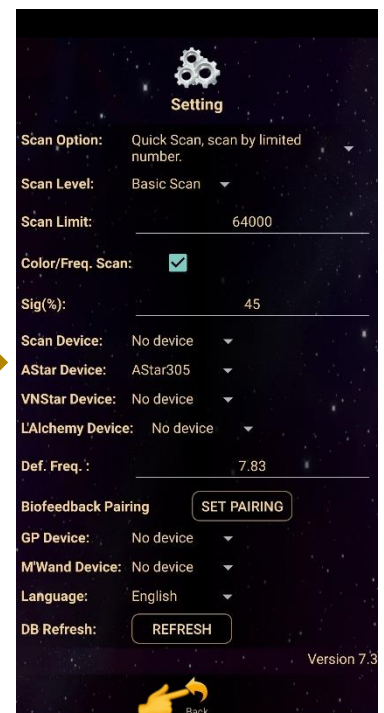
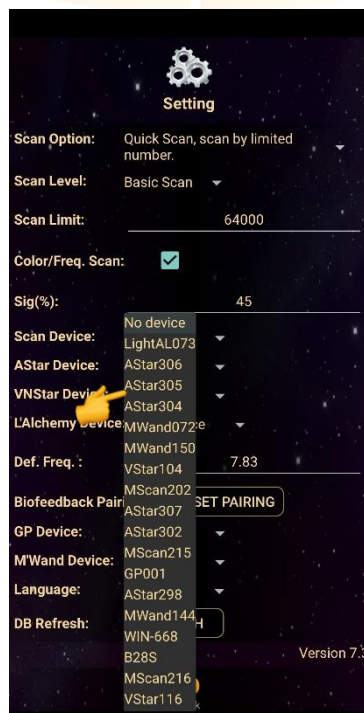
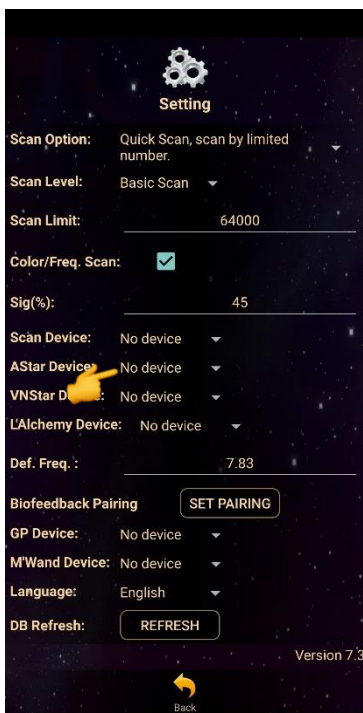
2. When the Light Mandalas device name appear, tap on it and insert password: “1234” then tap OK to pair it.



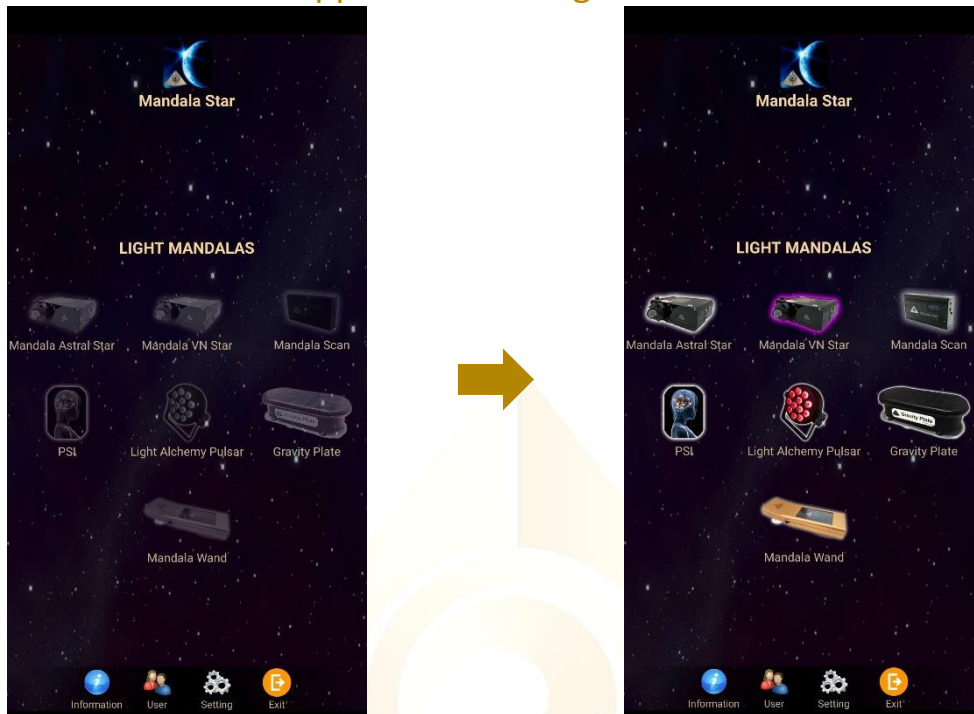
5.4 Application Settings

5.4.1 Bluetooth Connection Setup:

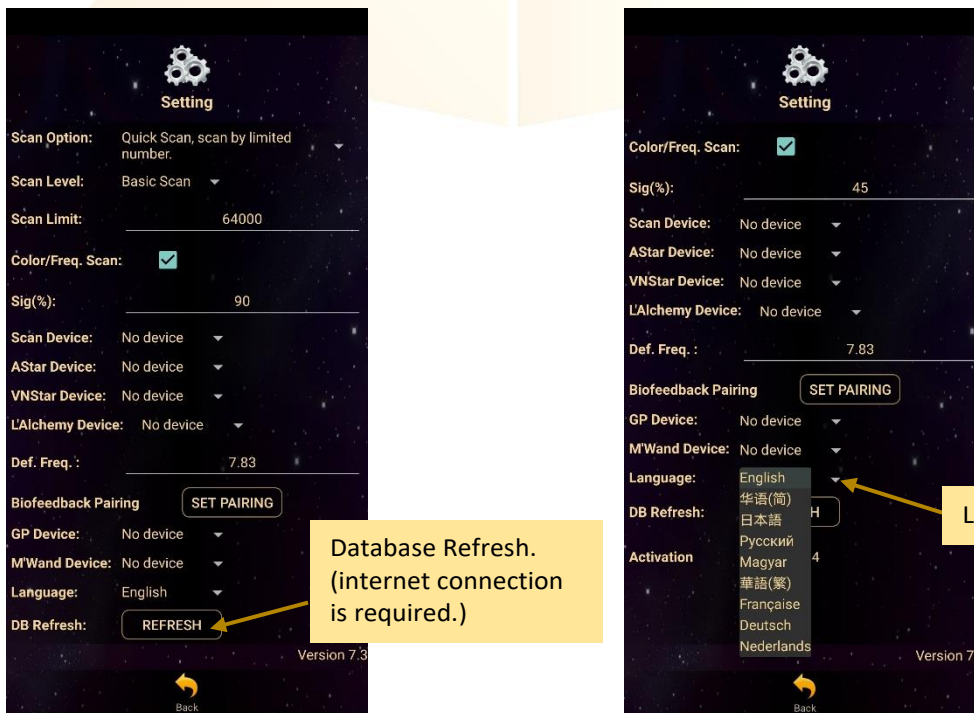
1. Go to the Mandala Star application **Setting**, tab on the device which you want to pair with and choose the specific device name. Then tap **Back**.



- The icon of the device in the Home Page will turn on (turn to colour icon) when the device name is set in the application setting.



5.4.2 General Setting



5.4.3 Mandala Dynamic Scan Setting

Scan Level:

1. Basic Scan: will scan on blue and green state.
2. Deep Scan: will scan only on green state.

Colour/Freq. Scan:

Colour Scan for Astral Star and VN Star:

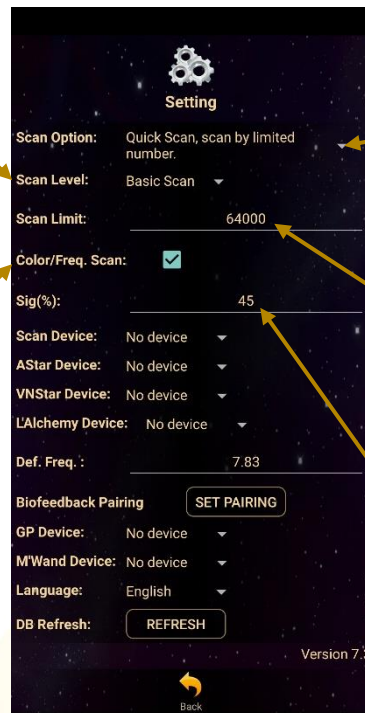
- Tick: different colors preset scan results
- Untick: white color preset scan results

Freq. Scan for Light Alchemy Pulsar:

- Tick: different frequencies preset scan results
- Untick: default frequency preset scan results

Freq. Scan for Mandala Wand:

- Tick: different color preset and laser scan results
- Untick: no color preset and all laser ON (FULL) scan results



Scan Option:

1. Quick Scan: scan by number added.
2. Bio Matrix Scan: scan by human body coherence. (No limit)

Scan Limit:

Set the scan numbers for Quick Scan.

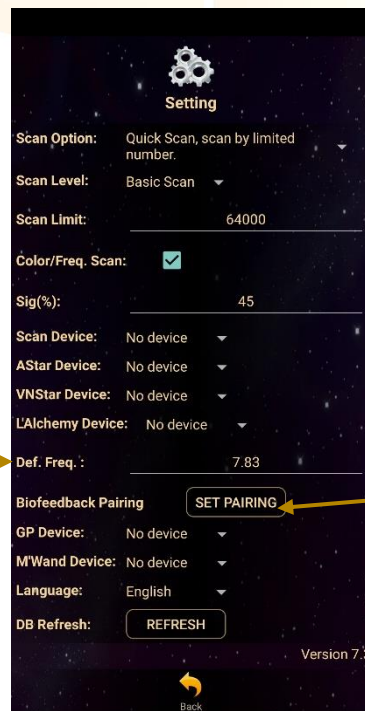
Sig. (%):

the significant of the scan result that focus on.

5.4.4 Light Alchemy Pulsar Setting

Default Frequency:

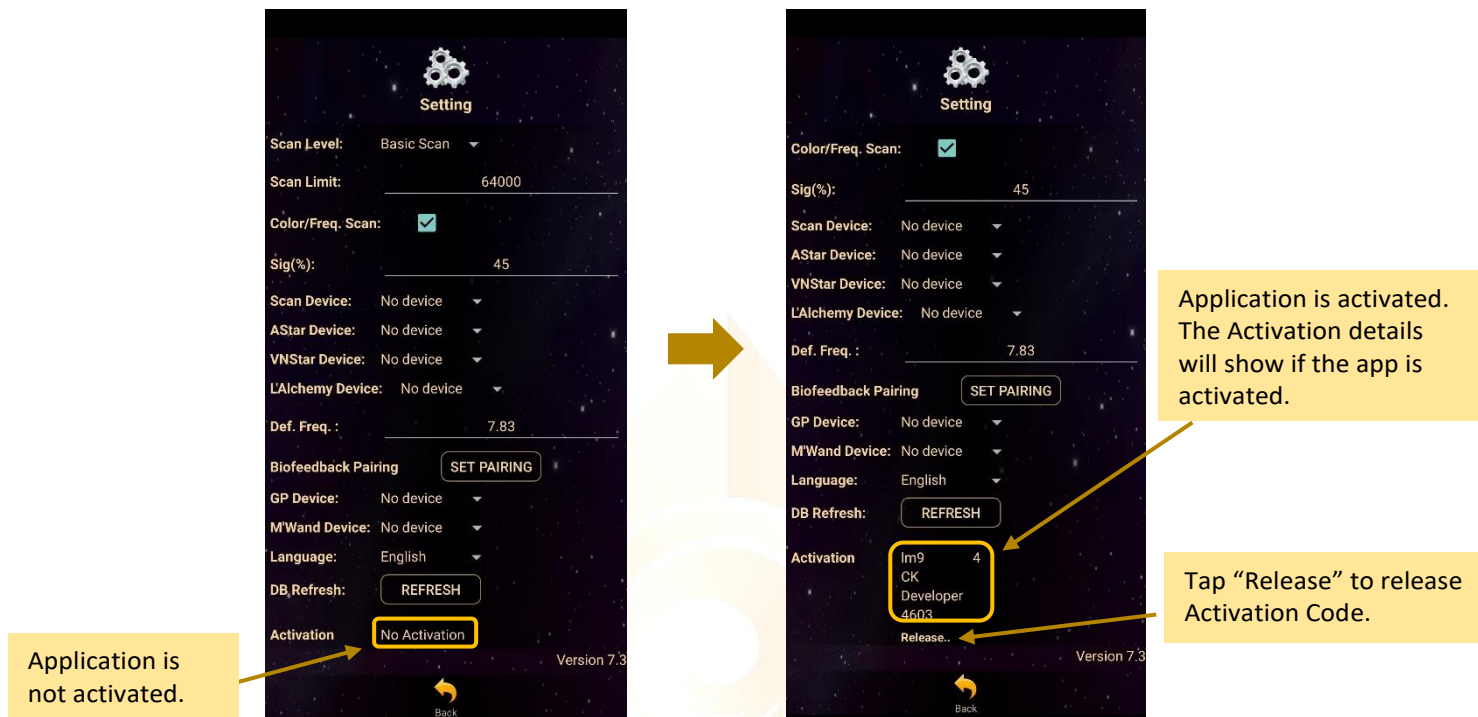
User can set the default frequency at here. The frequency for the Light Alchemy Pulsar Scan results will be in default frequency if the **Colour/Freq. Scan** option in the settings is unticked.



Biofeedback Pairing:

Biofeedback function activate and deactivate.

5.4.5 Application Activation Status



Each activation code can only be used up to maximum 5 different tablets. If the activation code is already used to activate 5 different tablets, and user wish to use the activation code on 6th tablet (e.g. change tablet), user has to release the activation code from either one of the previous activated tablet first.



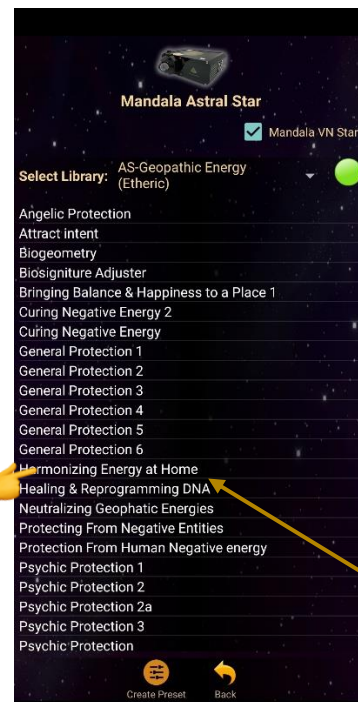
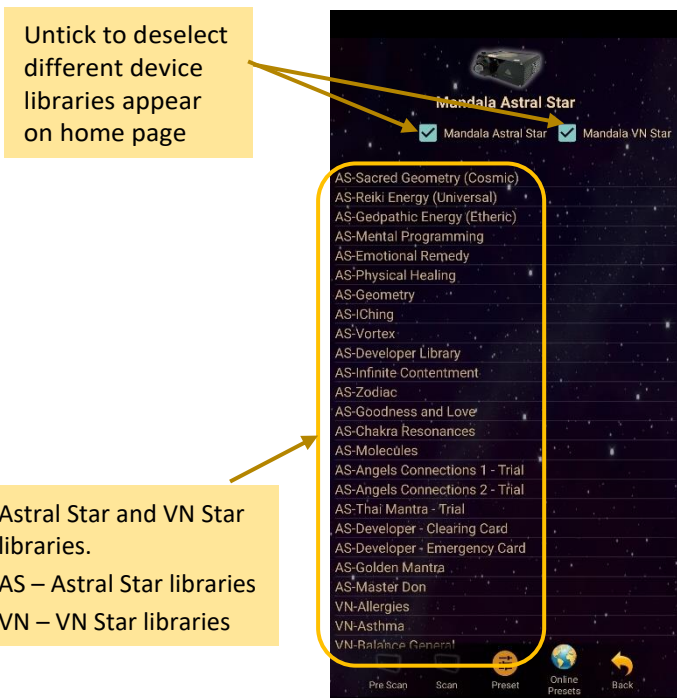
6 Mandala Astral Star

Tap on the **Mandala Astral Star** icon in the **Mandala Star Application Main Page** then you will go to **Mandala Astral Star Home Page**.



6.1 Library

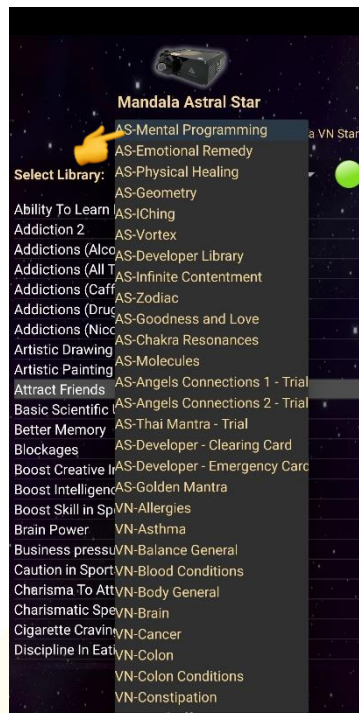
To play the pattern directly from the Library, tap on any of the libraries and choose the pattern you wish to play.



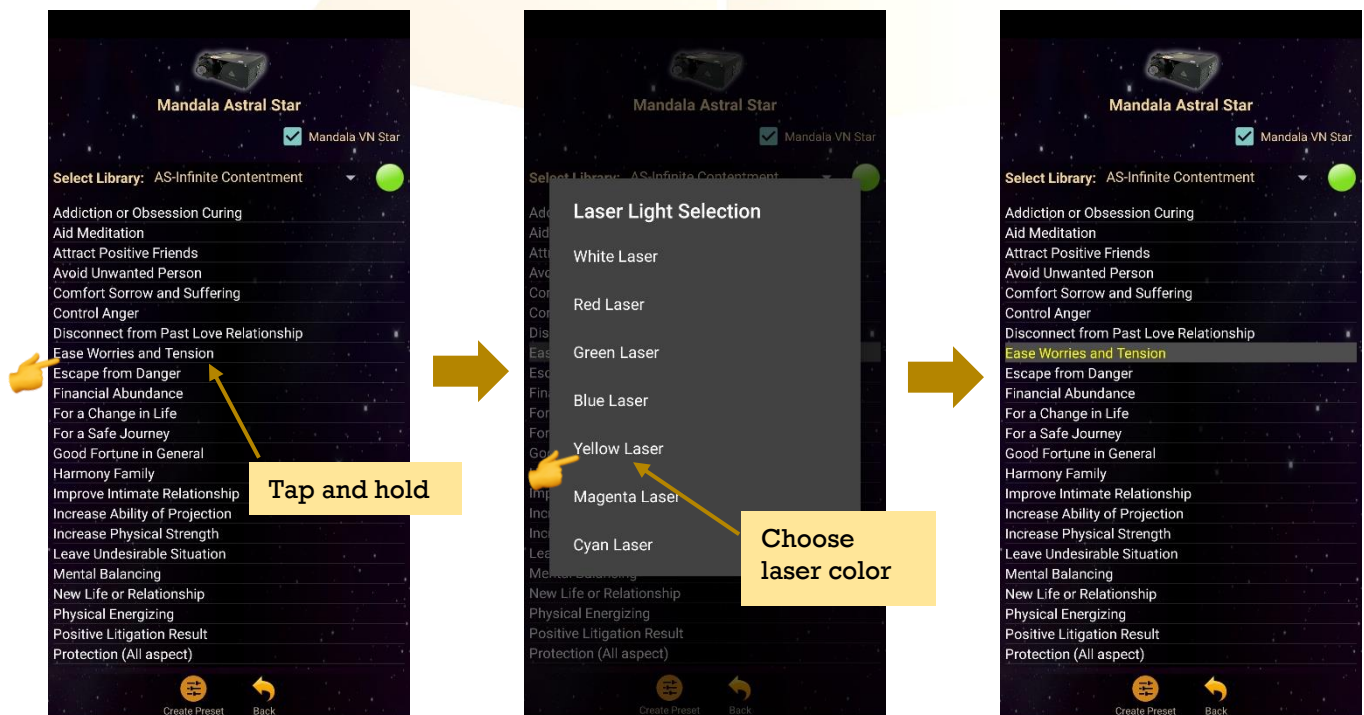
Connection Status:
This indicator shows whether the tablet is connected to the device.
Green → Connected
Red → Not connect

Tab on the pattern name to play the pattern directly.

User can switch to different libraries from the **Select Library** drop list.



6.1.1 Pattern/item Laser Light Color Selection



6.2 Pre Scan

This function will help user to choose the priority/significant libraries by user body coherence.

*** Remember to pair Mandala Dynamic Scan with tablet prior to use this function.**

The colour of the **Pre Scan** and **Scan** icon will turn on when the Mandala Dynamic Scan is set in the application setting.

Reminder to remind user to turn ON Mandala Dynamic Scan.

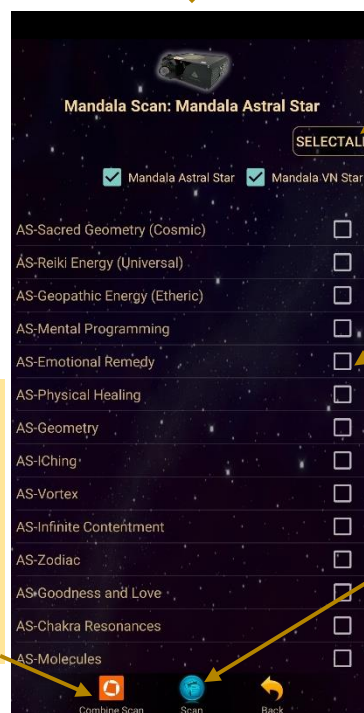
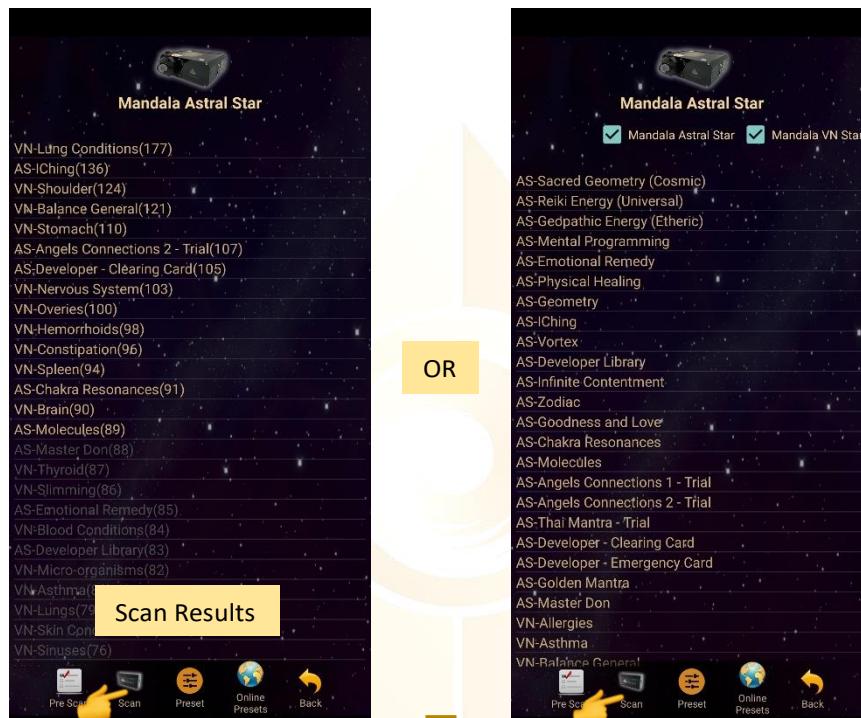
The number of scan for this library during this scan.
* the higher the number of scan of the item, the more significant the item is in this scan, and so on.

Grey colour items represent insignificant libraries in this scan.
* The significant % can be set by the user in the application settings.

6.3 Scan

User can tab on **Scan** icon on the **Pre Scan Results** to continue the further scan or directly tab on **Scan** icon on the **Mandala Astral Star Home Page** to manually select specific library to scan.

Tap on **Scan** icon on the **Mandala Astral Star Home Page** and manually select library to scan.



Select all library to scan

Select specific library to scan

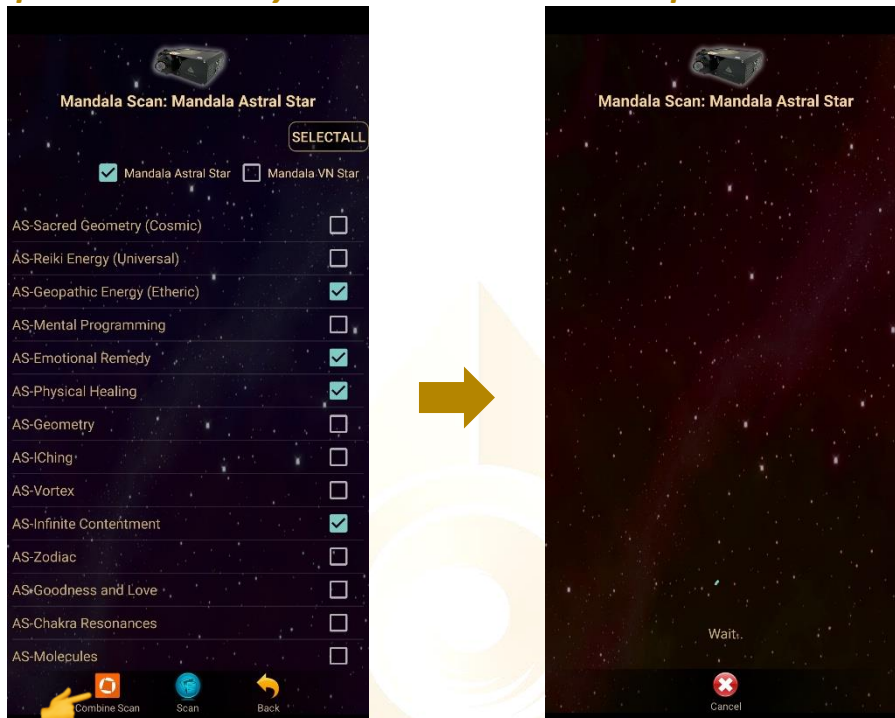
Combine Scan:
Combine all selected libraries in one list to scan. The scan results will show in only one preset library. (Fast. For general.)

Scan – Multiple Scan:
Scan all selected libraries one by one. The scan results will show in separate preset library. (take longer time. More accurate.)

6.3.1 Combine Scan

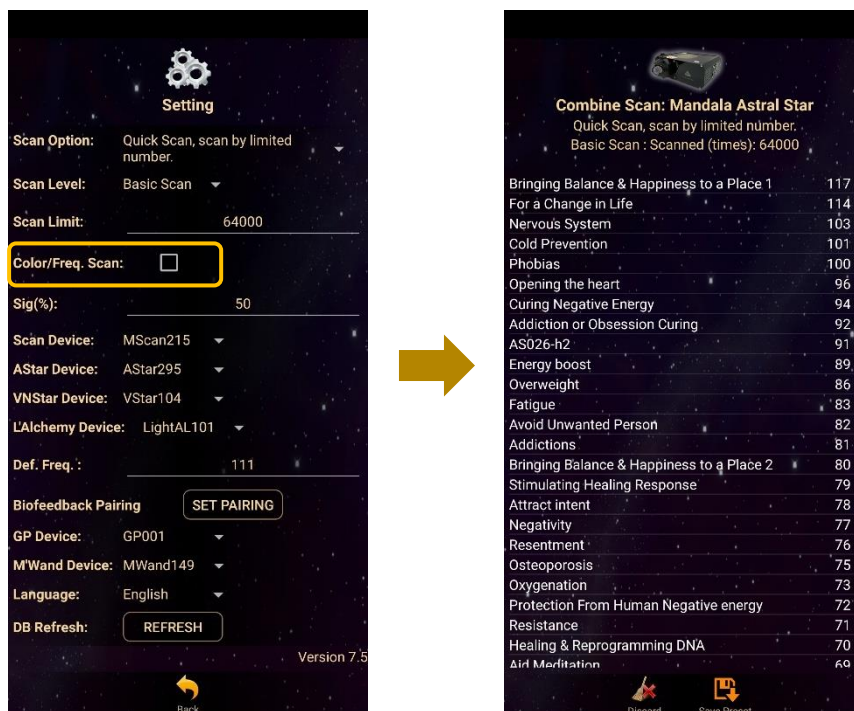
Select all library or specific library to scan and tab on the **Combine Scan**.

** Remember to pair Mandala Dynamic Scan with tablet prior to use this function.*

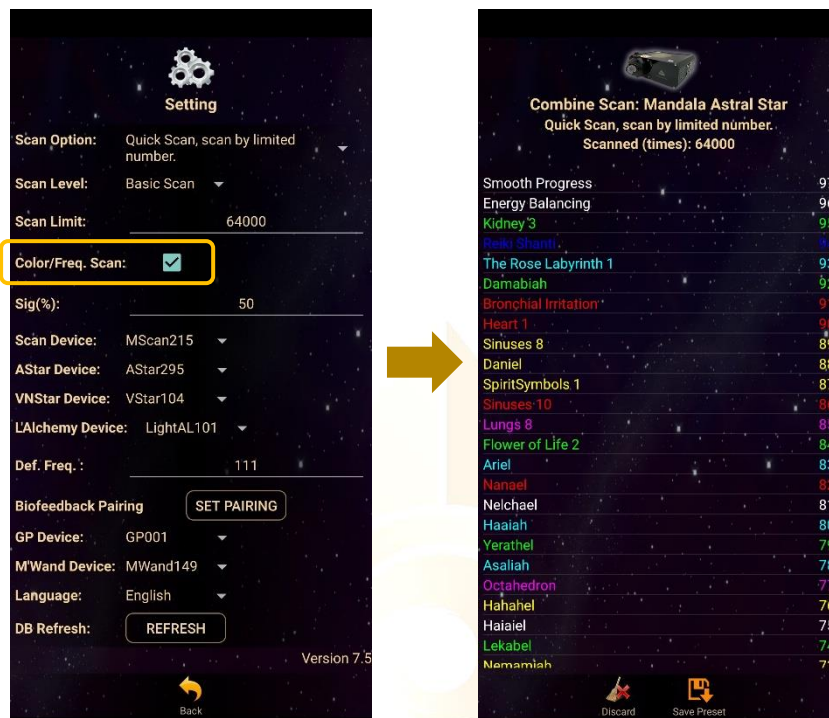


Create Scanned Preset from Combine Scan Result:

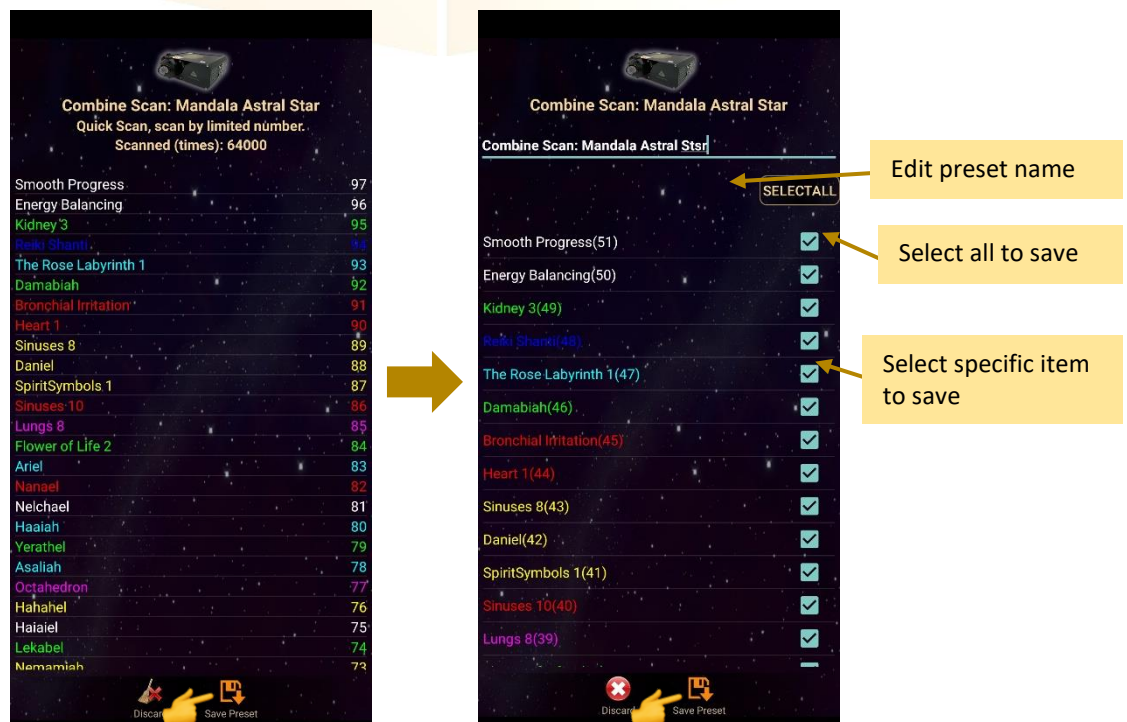
If **Colour/Freq. Scan** is **unticked** in app **Setting**, the scan will run in default mode which end up with all white color scan result items only.



If **Colour/Freq. Scan** is **ticked** in app **Setting**, the items of the scan results are in different laser color.

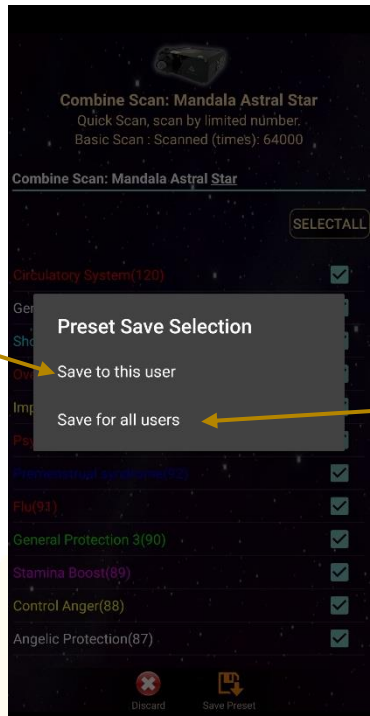


The scan results will show after the scan is completed. Then, tab on **Save Preset**. Select the item you wish to save and tab on **Save Preset** again to save it into the Scanned Preset.



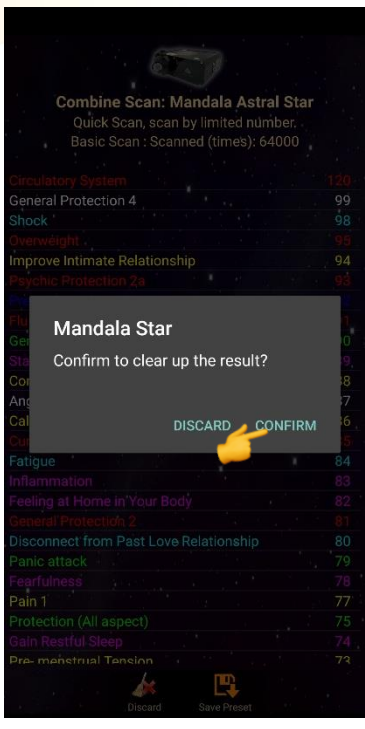


Save to this user.
Only this user can see and play this scanned preset in the scanned preset library



Save for all users.
Everyone can see and play this scanned preset in the scanned preset library

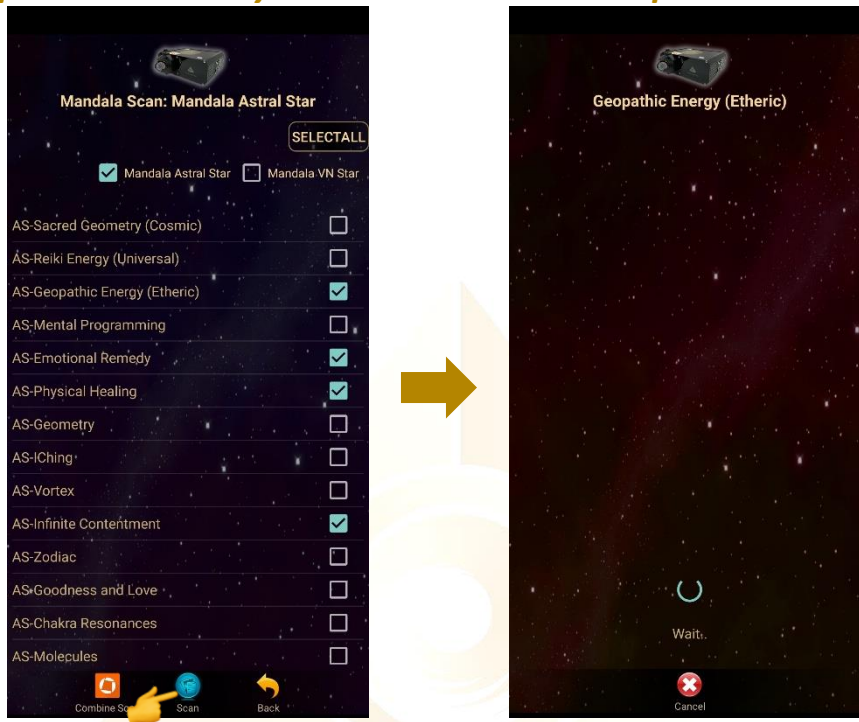
When the presets are saved, tab on **Discard** and select **Confirm** to go back to **Mandala Astral Star Home Page**.



6.3.2 Multiple Scan

Select all library or specific library to scan and tab on the **Scan**.

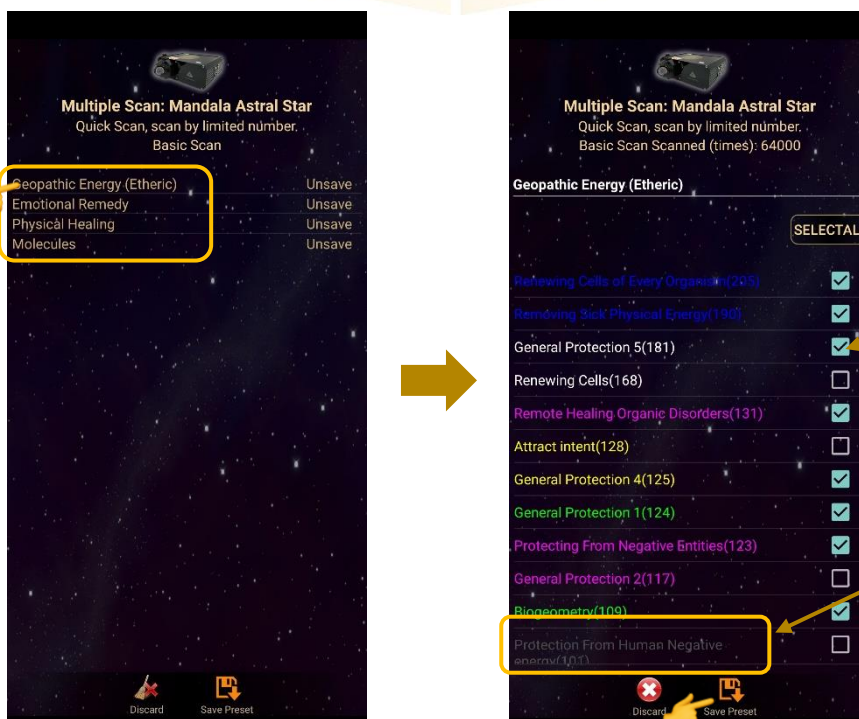
** Remember to pair Mandala Dynamic Scan with tablet prior to use this function.*



Create Scanned Preset from Multiple Scan Result:

The scan results will show after the scan is completed.

1. Choose specific preset in the library to save:



Tap on any libraries to choose the specific items to save

Select all to save

Select specific item to save

Grey colour items represent insignificant libraries in this scan. The significant % can be set by the user in the application settings.

2. Choose specific libraries to save:

In this save method, all frequency/items in each library chose will be saved including insignificant items (grey colour items).

Multiple Scan: Mandala Astral Star
Quick Scan, scan by limited number.
Basic Scan

Geopathic Energy (Ethereic)	Unsave
Emotional Remedy	Unsave
Physical Healing	Unsave
Molecules	Unsave

Multiple Scan: Mandala Astral Star

SELECT ALL

Geopathic Energy (Ethereic)	<input checked="" type="checkbox"/>
Emotional Remedy	<input type="checkbox"/>
Physical Healing	<input checked="" type="checkbox"/>
Molecules	<input checked="" type="checkbox"/>

Multiple Scan: Mandala Astral Star

SELECT ALL

Geopathic Energy (Ethereic)

Emotional Remedy

Physical Healing

Mo

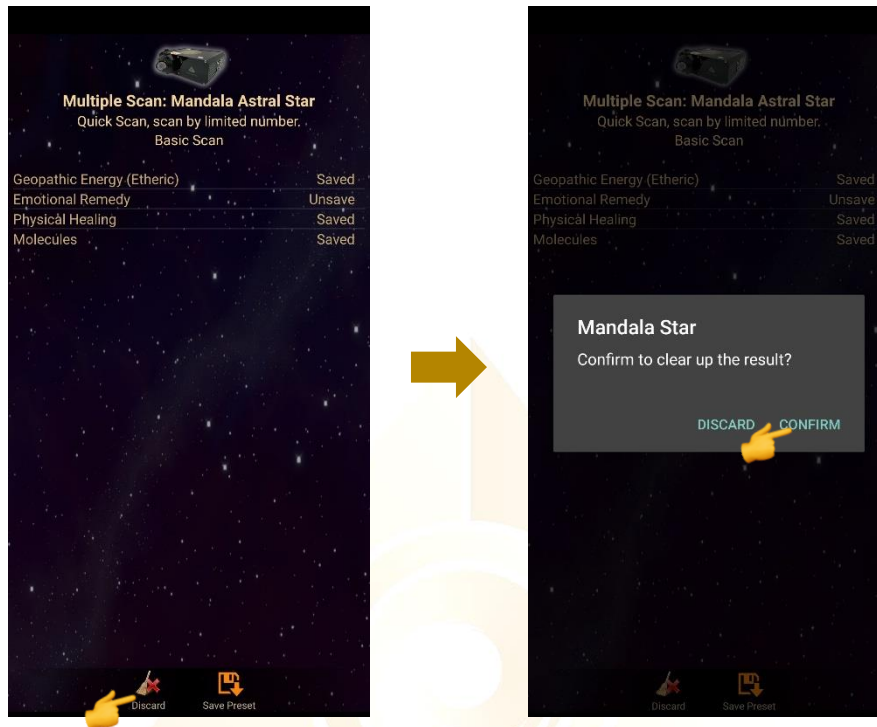
Save to this user.
Only this user can see and play this scanned preset in the scanned preset library

Preset Save Selection

- Save to this user
- Save for all users
- Cancel

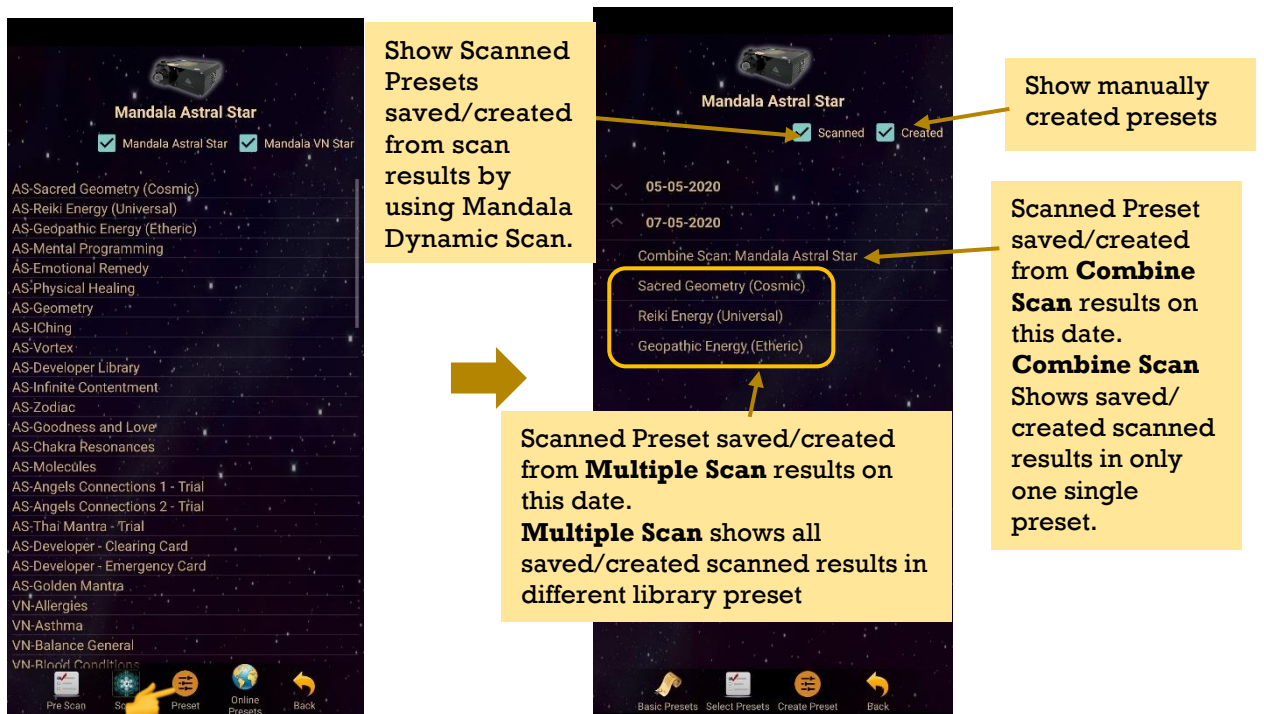
Save for all users.
Everyone can see and play this scanned preset in the scanned preset library

When the presets are saved, tab on **Discard** and select **Confirm** to go back to **Mandala Astral Star Home Page**.



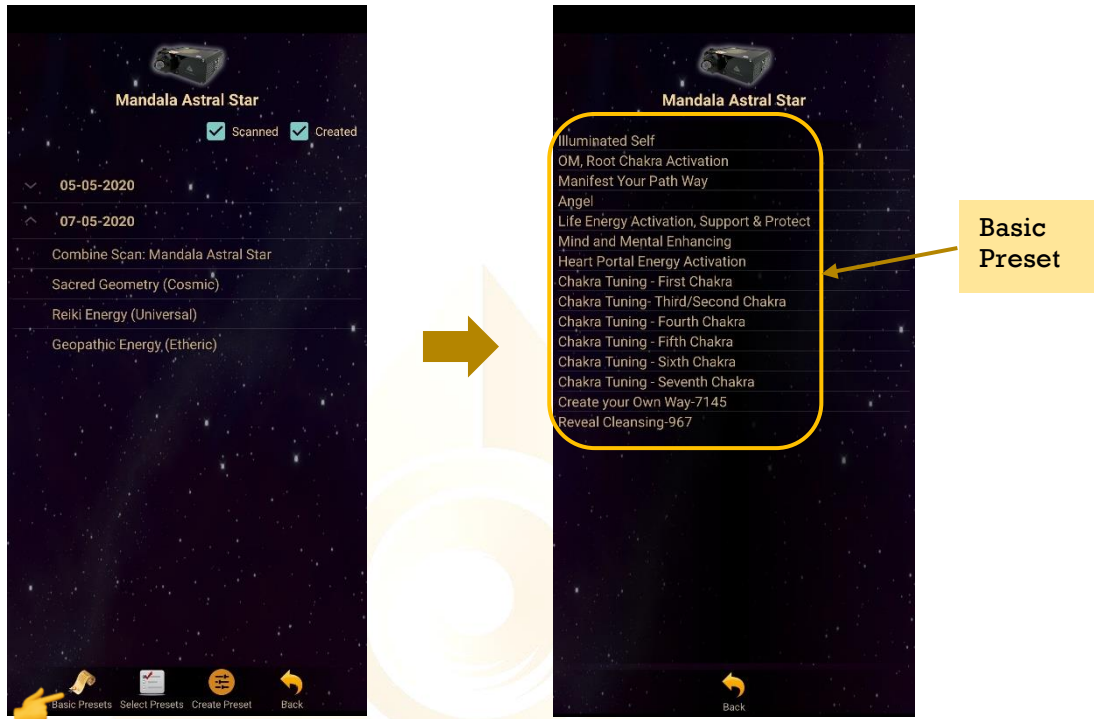
6.4 Preset

Tap on Preset and it will bring you to Preset Home Page.

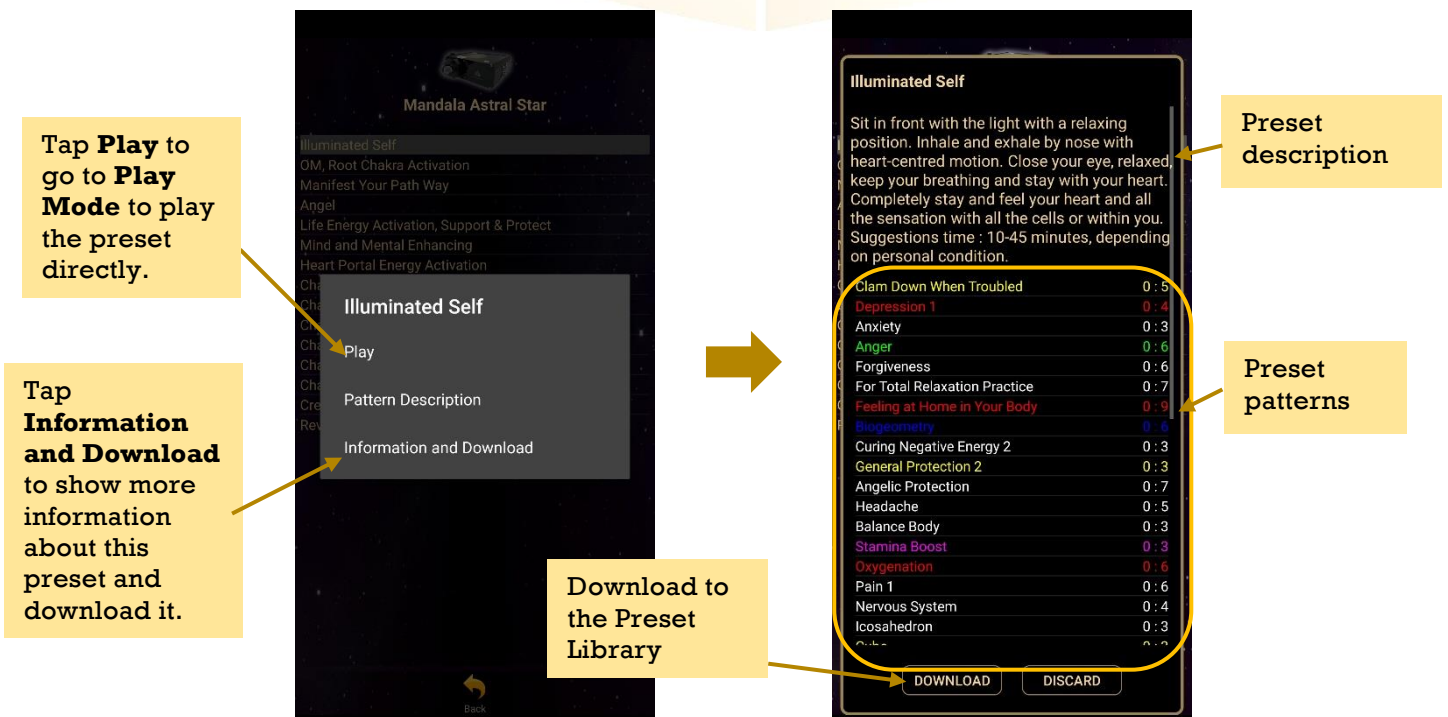


6.4.1 Basic Preset

User can choose to play **Basic Presets** created and shared by Light Mandalas team in this mode.

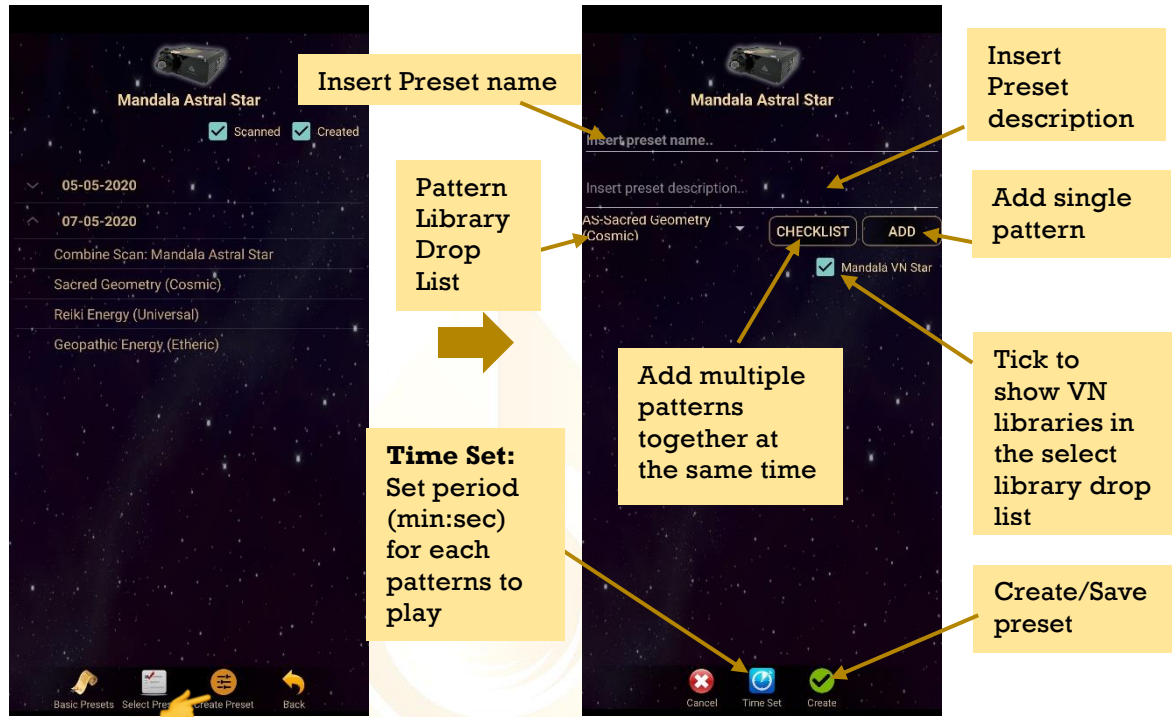


Tap on any library to show the selection.



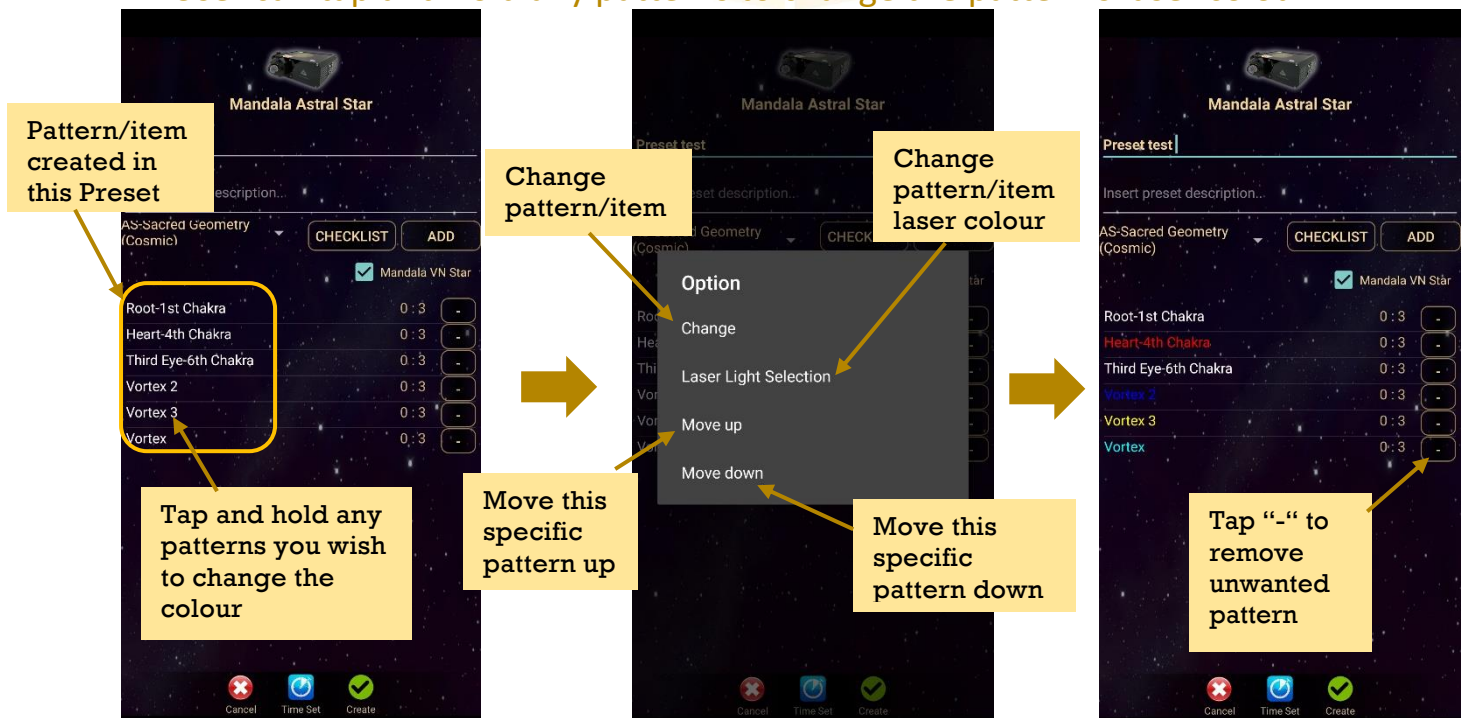
6.4.2 Create Preset

User can manually create/customize their own presets. When user is done with the preset pattern setup, tap on **Create** to save it.



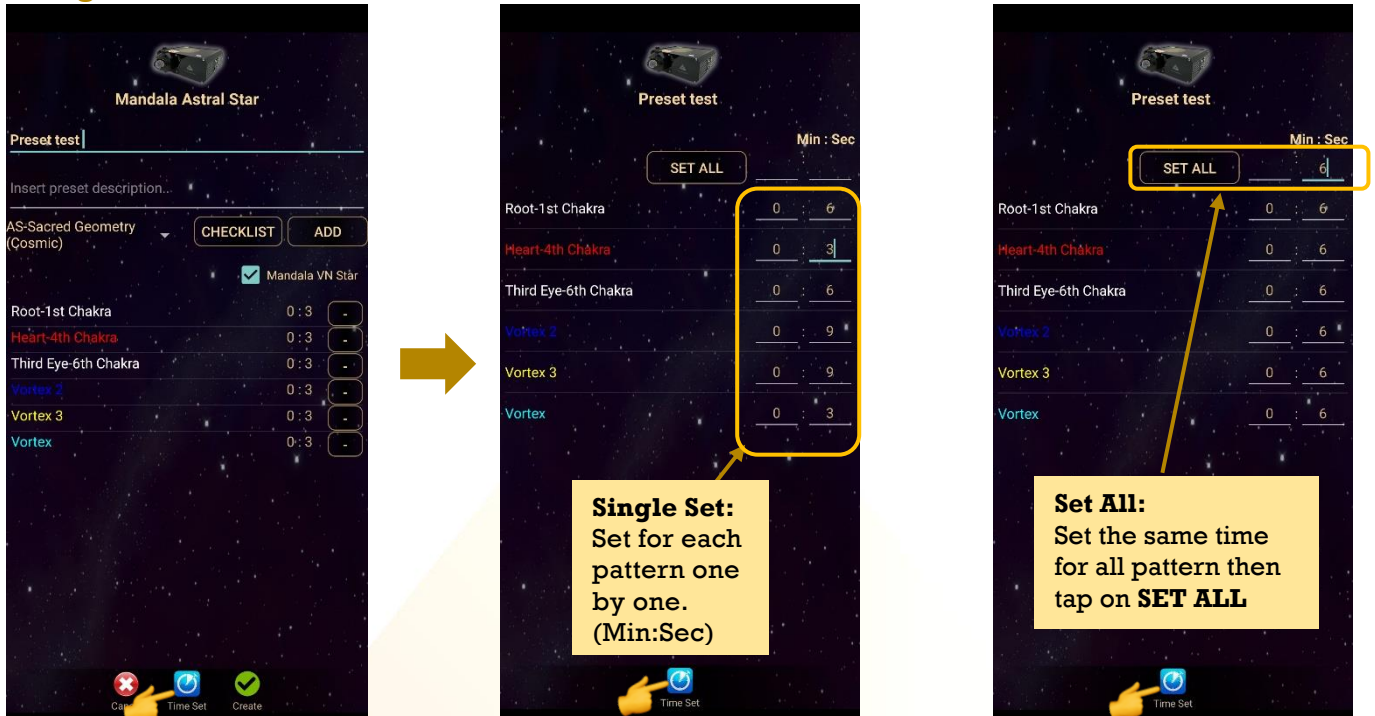
1. Preset Pattern Laser Colour Setup:

User can tap and hold any patterns to change the pattern's laser colour.



2. Preset Pattern Play Time Setup:

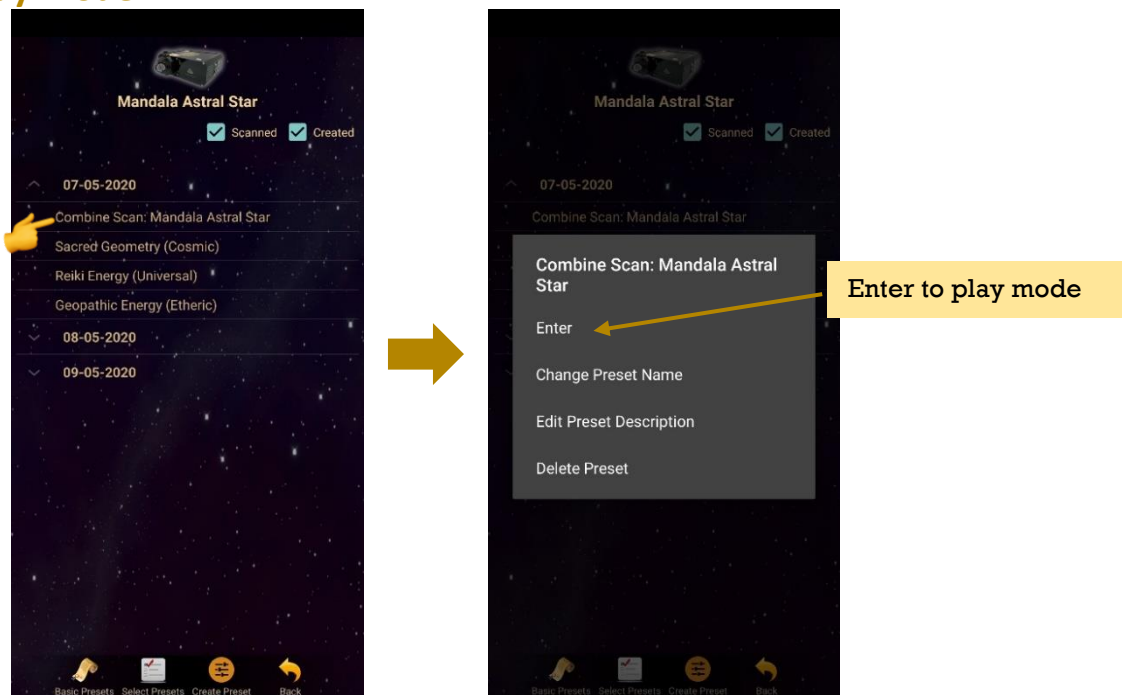
User can customize the play time for each pattern by tap on **Time Set** and choose the method of **Single Set** or **Set All**. When the time is set, user can tap on **Time Set** again to save it.



6.4.3 Preset Play Mode

1. Select Single Preset:

Tap on any preset in the Preset Home Page you wish to play. Then, tap on **Enter** to enter to **Play Mode**.



2. Select Multiple Preset:

Tab on **Select Presets** to create a playlist to play together. User can select presets from **Scanned presets**, **Created Presets** or **Downloaded Basic Preset** and **Online Preset**.

Scan the best presets which is suitable for the user at that present moment.

All Scanned Presets, manually Created Presets, downloaded Basic Presets and Online Presets will show in the same list

Select presets to create playlist

Tap Play to enter to play mode

Tap Delete Preset to remove unwanted preset.

3. Play Mode:

Tap play to play the created playlist.

Tick Repeat to repeat playlist/Looping

Tick Burst to set the numbers of repeat/loop.
In this example the burst is set to 2. This means the playlist will repeat 2 times then stop.

Interval is the break time between each loop.
In this example the interval for each loop is set to 3 seconds. This means the playlist will stop for 3 seconds before start to play the next loop.

Reset playlist

The screenshot shows the 'Mandala Astral Star' app interface. At the top, there are three checkboxes: 'Repeat' (unchecked), 'Burst' (checked), and 'Interval' (set to 3). Below these are various energy patterns listed with their durations. At the bottom, there are three buttons: 'Back', 'Reset', and 'Play'. A hand icon is shown tapping the 'Play' button.

User can tap **Back** to go back to previous page if wish to recreate the playlist.

Discard:
The play mode will stop immediately

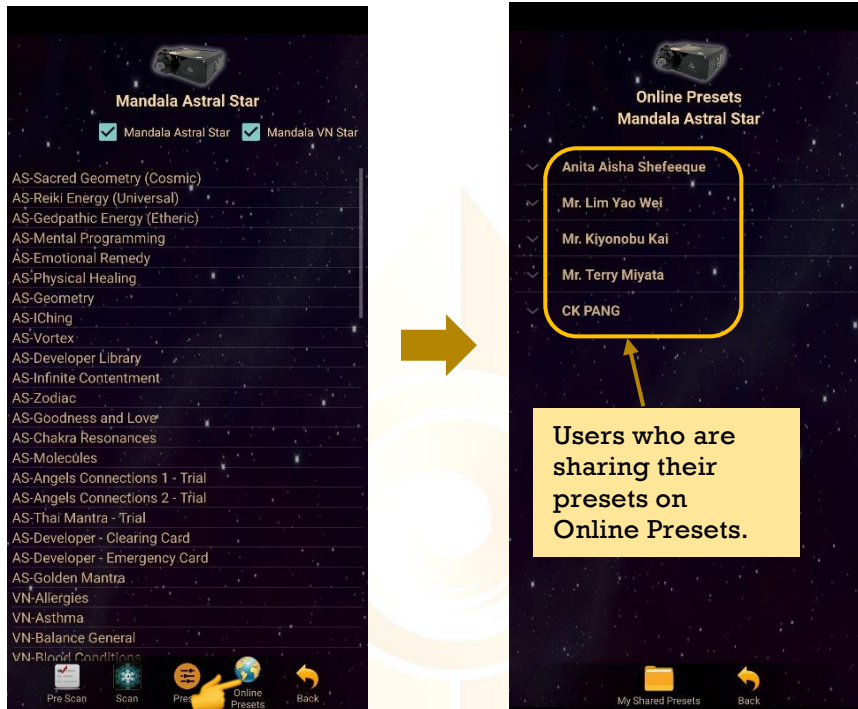
Keep:
The pattern which is playing now will continue to play.

The screenshot shows the 'Mandala Astral Star' app interface. A dialog box titled 'Mandala Star' is overlaid on the screen, asking 'Do you want to keep the pattern?'. There are two buttons: 'DISCARD' and 'KEEP'. A hand icon is shown tapping the 'KEEP' button.

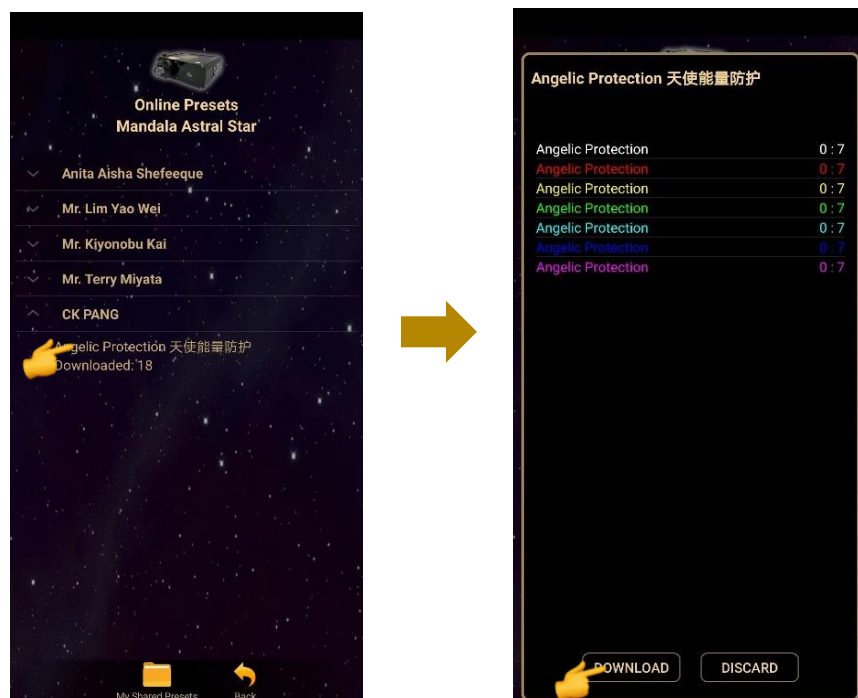
6.5 Online Presets

User can download presets shared by other users in **Online Presets** mode. User can also upload their preset online and share with other Light Mandalas user.

6.5.1 Download Preset

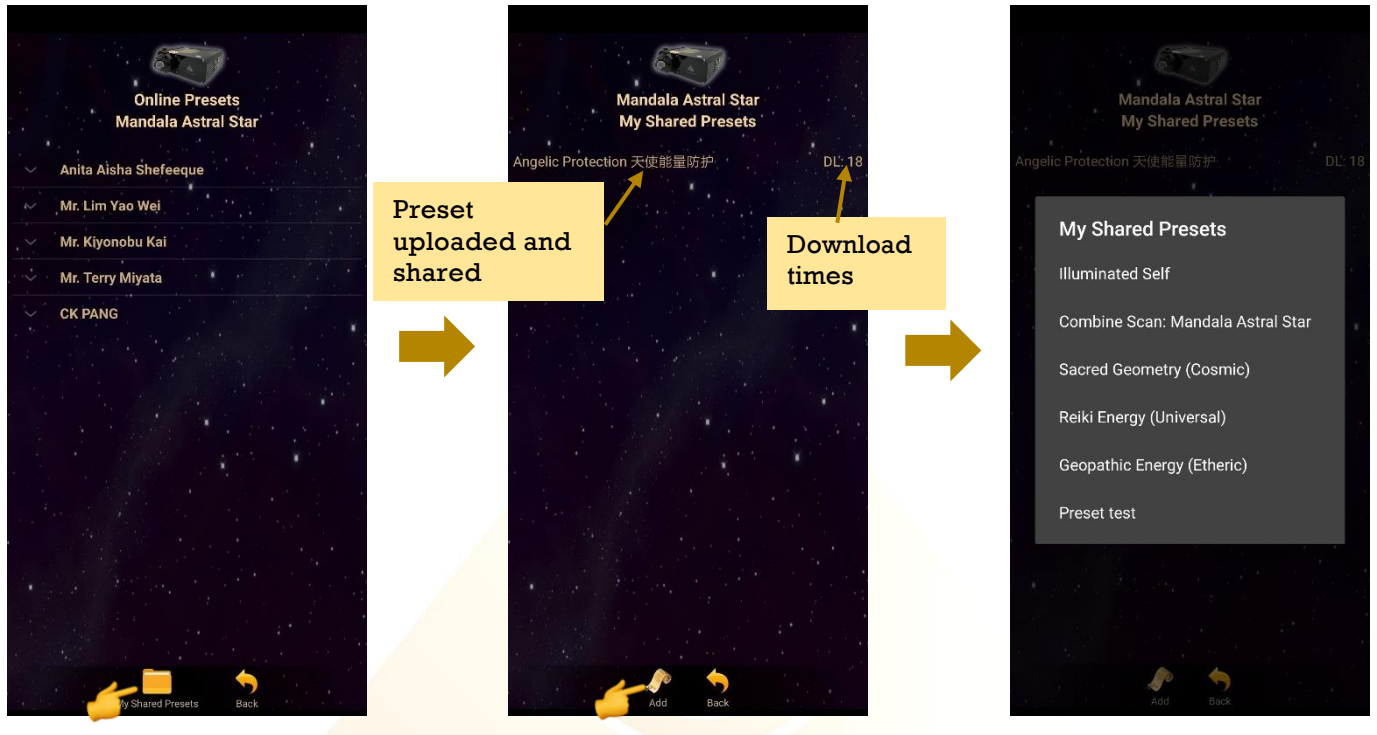


To download the online preset, tap on the user name to see what presets they are sharing. Then tap on the preset you want to download for more information and choose **Download**.

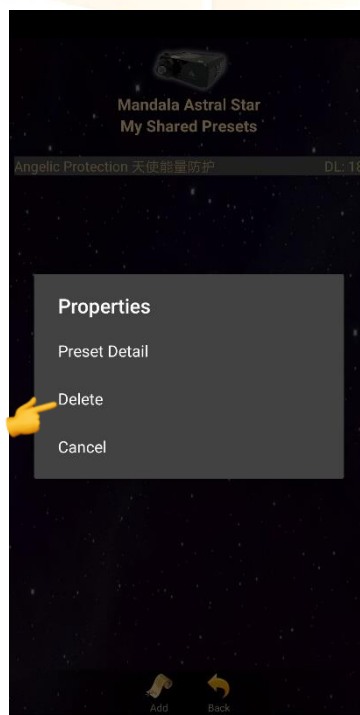


6.5.2 Upload Preset

For upload preset, tap on **My Shared Presets**, then tap on **Add** and choose the preset you wish to upload from the presets you have created earlier.



For delete the shared preset, tap on the preset and choose **Delete**.



Shall there be any inquiry, please contact us for further support.

Light Mandalas Co., Ltd. (Thailand Headquarters):

- **Light Mandalas Website:** www.light-mandalas.com
- **Official:** info@light-mandalas.com
- **WeChat Support ID:** tianyuan0336,
- **Technical Support Email:** chatchai@light-mandalas.com
- **Training Support Email:** m.maychell@light-mandalas.com

Local agents contacts:

- **Japan:** japan@light-mandalas.com
- **Taiwan:** james.lu.bbl@gmail.com, acgangel650002@gmail.com, taiwan@light-mandalas.com
- **Hong Kong:** hongkong@light-mandalas.com
- **Singapore:** singapore@light-mandalas.com
- **Malaysia:** malaysia@light-mandalas.com
- **Hungary:** hungary@light-mandalas.com
- **Switzerland, Germany, Austria, Netherlands:** info@light-mandalas.ch
- **France, Spain:** france-spain@light-mandalas.com
- **USA:** usa@light-mandalas.com
- **New Zealand, Australia:** sally.yu@light-mandalas.com