



Mandala Star App User Manual

Mandala Gravity Plate



Please read the manual before using the tools.

Version 2.0

Table of Contents

1	<i>Android Device Specification Requirement</i>	2
2	<i>Mobile Application End-User License Agreement</i>	3
3	<i>Application Download and Installation</i>	4
4	<i>Mandala Star Application Main Page Features</i>	7
5	<i>Application Setup</i>	8
5.1	<i>New User Setup</i>	8
5.2	<i>Application Activation</i>	9
5.3	<i>Tablet Bluetooth Connection Setup</i>	10
5.4	<i>Application Settings</i>	11
5.4.1	<i>Bluetooth Connection Setup:</i>	11
5.4.2	<i>General Setting</i>	12
5.4.3	<i>Mandala Dynamic Scan Setting</i>	13
5.4.4	<i>Light Alchemy Pulsar Setting</i>	13
5.4.5	<i>Application Activation Status</i>	14
6	<i>Mandala Gravity Plate</i>	15
6.1	<i>Step Remote Control Mode</i>	15
6.2	<i>Scan Mode</i>	16
6.2.1	<i>Create Scanned Preset</i>	17
6.3	<i>Preset</i>	18
6.3.1	<i>Create Preset</i>	19
6.3.2	<i>Preset Frequency Time Setup</i>	20
6.4	<i>Preset Play Mode</i>	200
6.5	<i>Biofeedback</i>	21

1 Android Device Specification Requirement

Mandala Star application can only be operated with **Android mobile phone or tablet.**

Minimum requirement:

Operating System:	Android OS
Android version:	Android 8.0 or higher
Others:	Bluetooth and WIFI function



2 Mobile Application End-User License Agreement

Please read this Mobile Application End-User License Agreement (“EULA”) carefully before downloading or using the Light Mandalas Aurora mobile application (“the application”). This EULA governs your use of the application, which will allow you to access Light Mandalas library and control Light Mandalas tools by your mobile device. Your use of the application indicates your consent to this EULA.

1. **License.** Light Mandalas Co., Ltd. grants you a revocable, non-exclusive, non-transferable, limited license to download, install, and use the application for your personal and internal business purposes strictly in accordance with this EULA

2. **Your Account.** Your use of the application requires that you have an account with Light Mandalas.

3. **Changes to this EULA.** Light Mandalas reserves the right to modify this EULA. Your continued use of the application after Light Mandalas publishes notice of changes to this EULA indicates your consent to the updated terms.

4. **No Included Maintenance and Support.** Light Mandalas may deploy changes, updates, or enhancements to the application at any time. Light Mandalas may provide maintenance and support for the application, but has no obligation whatsoever to furnish such services to you and may terminate such services at any time without notice. You acknowledge that Google has an obligation to furnish any maintenance and/or support services in connection with the application.

5. **Acceptable Use.** You agree that you will not use or encourage others to use the application in a way that could harm or impair others’ use of the Mobile App.

6. **Privacy.** Light Mandalas don’t collect your information from your application. Information inside the application will be private.

7. **No Warranty.** YOUR USE OF THE APPLICATION IS AT YOUR SOLE RISK. THE APPLICATION IS PROVIDED ON AN “AS IS” AND “AS AVAILABLE” BASIS. LIGHT MANDALAS EXPRESSLY DISCLAIMS ALL WARRANTIES OF ANY KIND.

8. **Suspension and Termination of the application.** Light Mandalas reserves the right to suspend or terminate your access to the application at any time.

9. **Intellectual Property Rights.** In the event of a third party claim that the application, or your possession and use of the application, infringes third party’s intellectual property rights, Light Mandalas, will be solely responsible for the investigation, defense, settlement and discharge of any such intellectual property infringement claim.

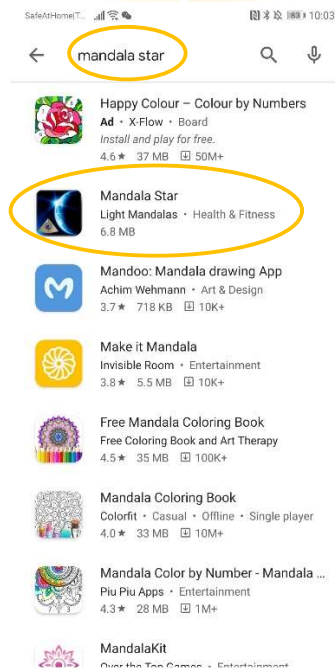
3 Application Download and Installation

User can download Mandala Star app from either “Google Play Store” or “Huawei AppGallery”

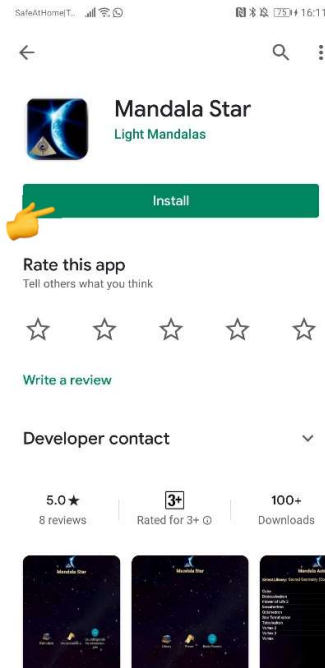
1. Open “Google Play Store” or “Huawei AppGallery” application



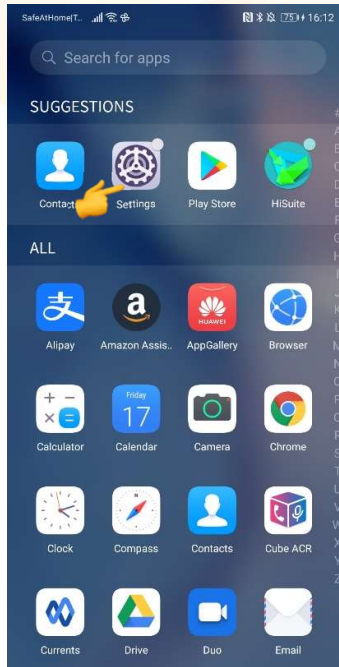
2. In the “Google Play Store” Search bar, type “Mandala Star”
In the “Huawei AppGallery” Search bar, type “星光曼陀罗”



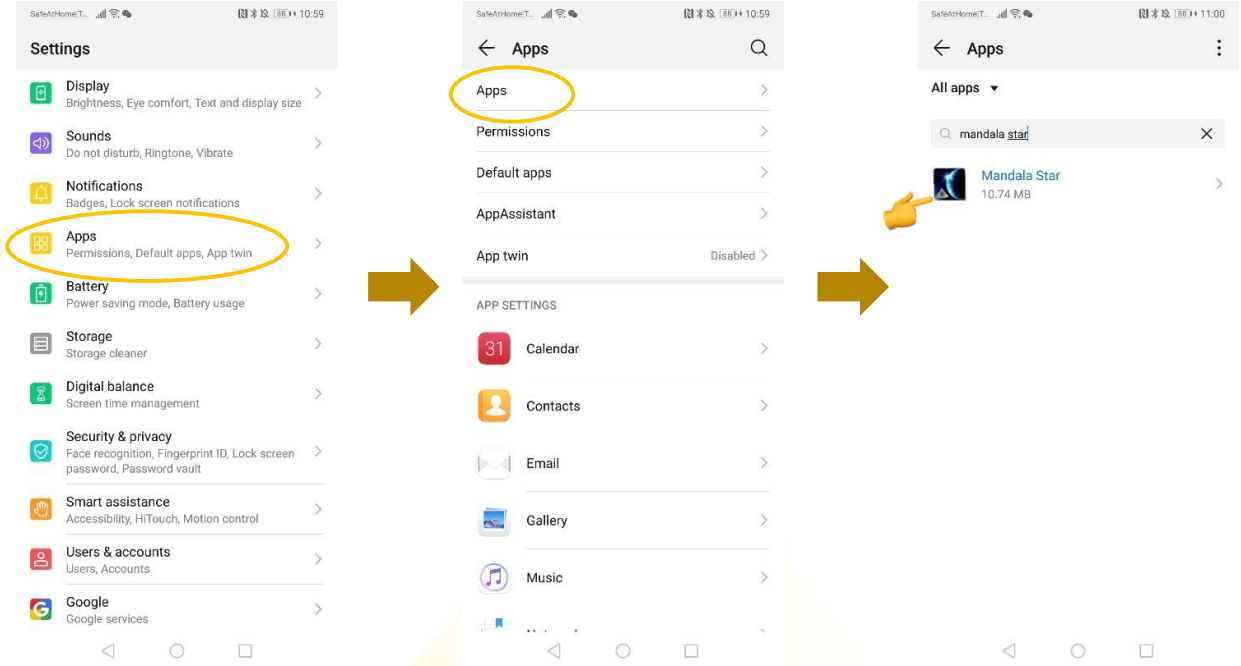
3. Tap on Install to install the app.



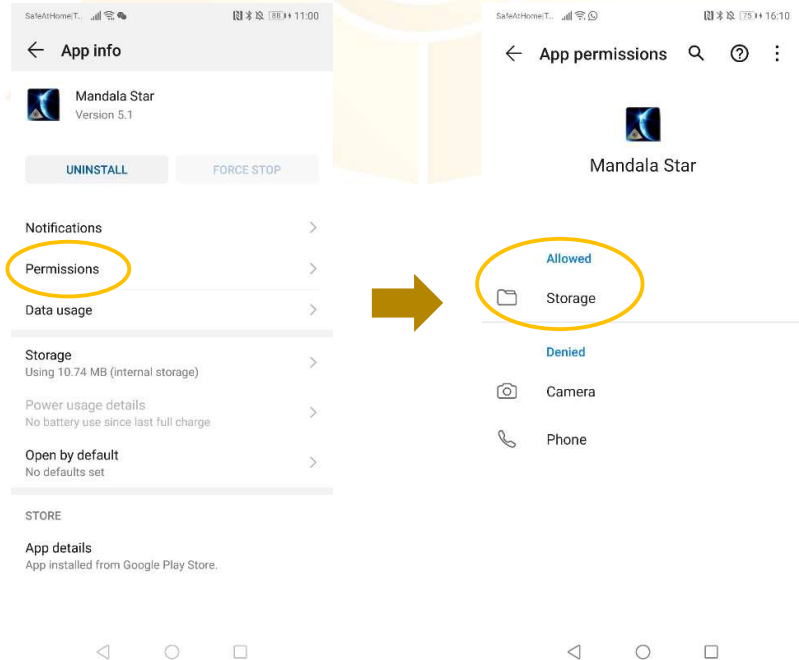
4. Allow application permission 4.1 Go to Tablet Settings



4.2 Go to “Apps” then tap on “Apps” and search for “Mandala Star”.



4.3 Tap on “Permissions” then switch on “Storage”



4 Mandala Star Application Main Page Features



1 - 7 are different Light Mandalas devices programs. User can use specific program to operate specific device.

1. Mandala Astral Star

2. Mandala VN Star

3. Mandala Scan

4. Psycho Spiritual Integration – PSI

- PSI library has to be purchased prior to use this program
- Has to use with Mandala Scan.

5. Light Alchemy Pulsar

6. Gravity Plate

7. Mandala Wand

8. Resonator (Beta)

9. Education (Introduction to Light Mandalas and other products)

10. Information: Provide user the latest application update information.

11. User: Create new user profile

12. Setting: Application Setting – Bluetooth Device Pairing, Mandala Scan Setting, Light Alchemy Setting, Language setting, Database refresh and Activation Code Release

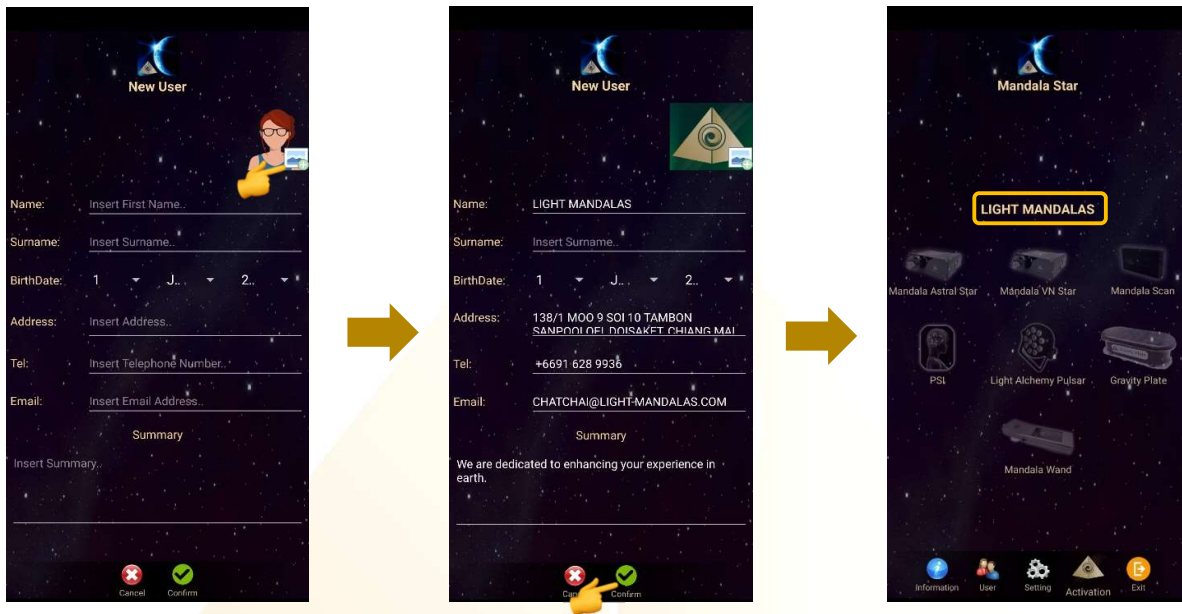
13. Activation: Activate the application with activation code

14. Exit: Exit from the application

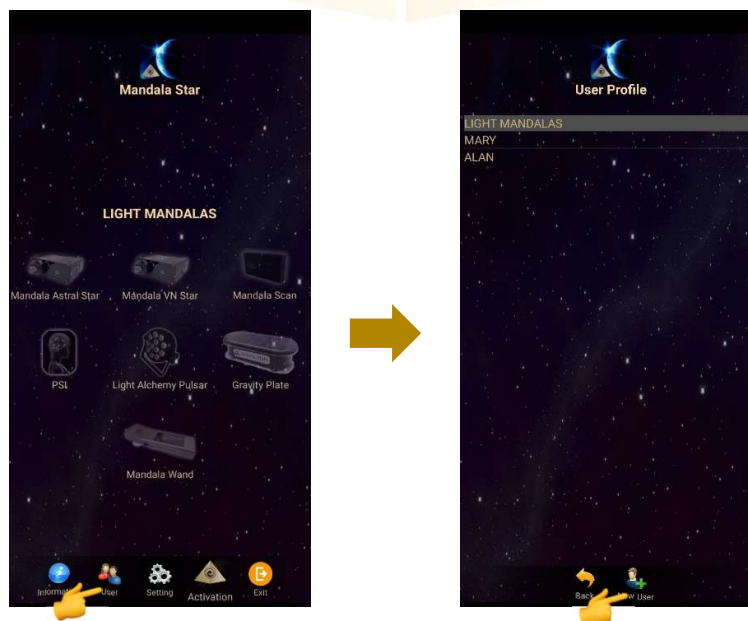
5 Application Setup

5.1 New User Setup

Once the app is opened, the “New User Create” will prompt out. Fill in the User profile and then tap on confirm to create new user profile. User also can insert their profile picture by tap on the picture insert. The user’s name will appear on the Home Page.



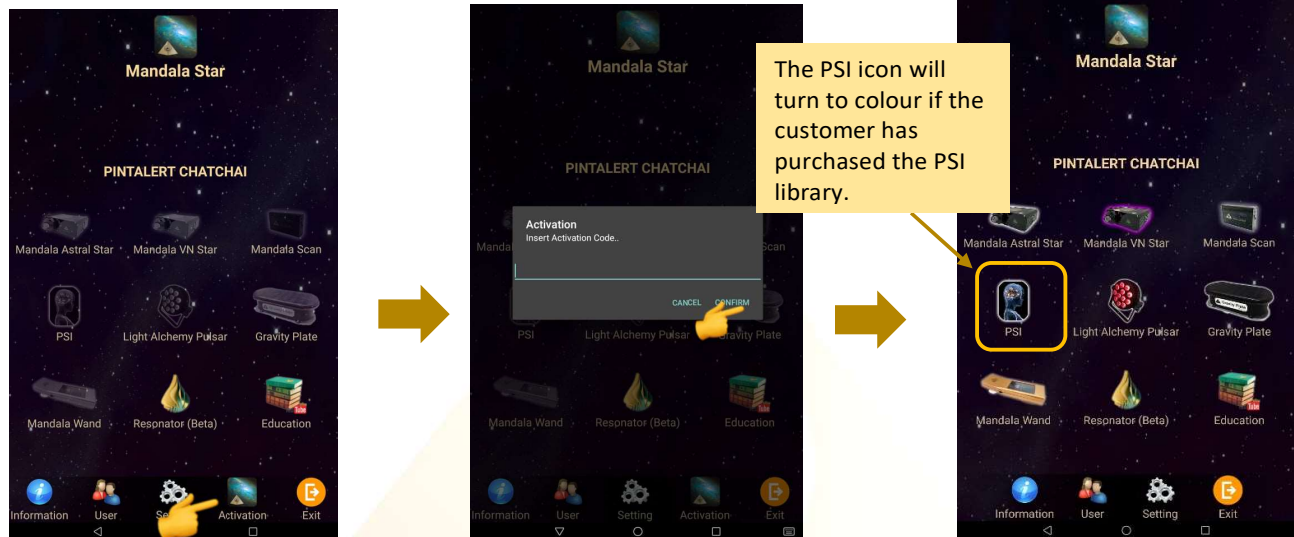
User can also add new user manually. User → New User



5.2 Application Activation

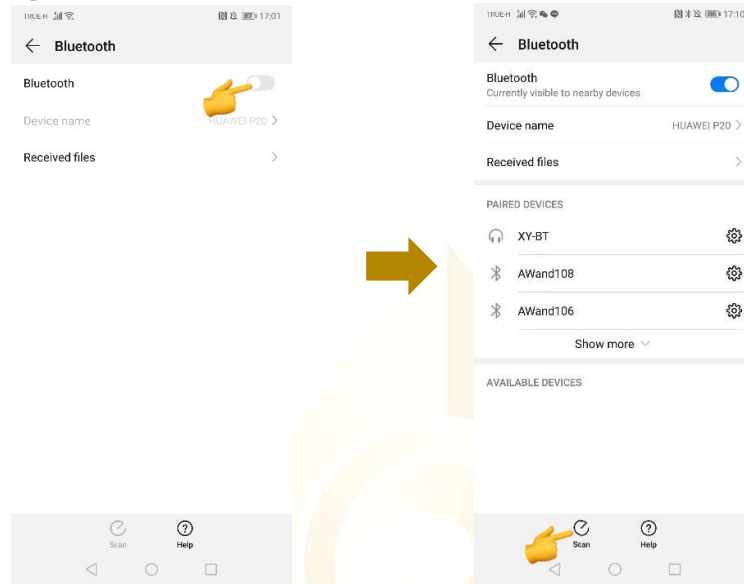
Tap on “**Activation**” to activate the application. Insert the activation code and tap confirm.

**User can request activation code from the dealer/local agent.*

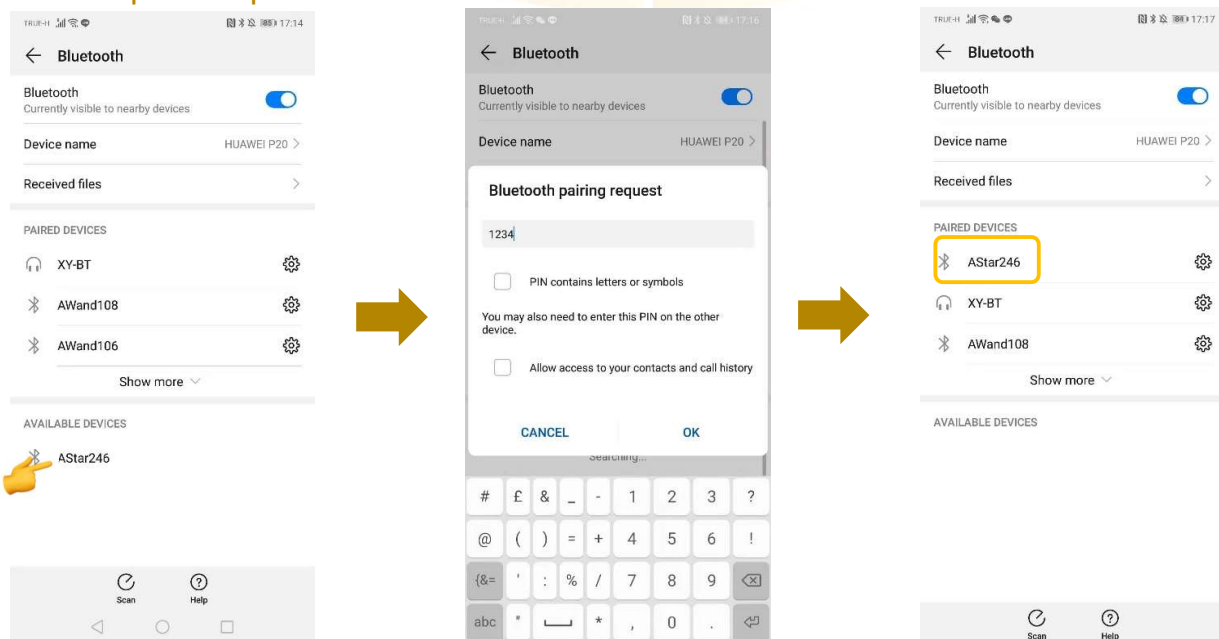


5.3 Tablet Bluetooth Connection Setup

1. In the android device, go to Setting then turn ON the Bluetooth and tap on scan to scan for the Light Mandalas device name.



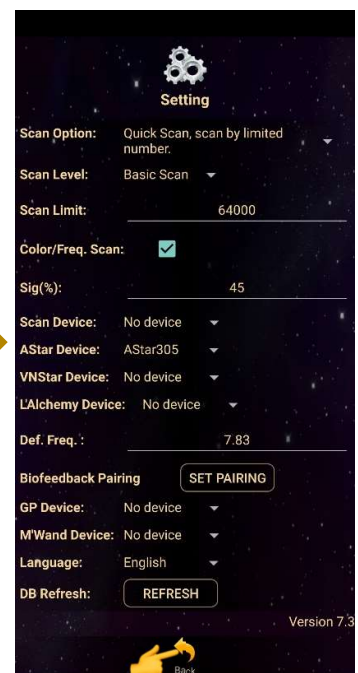
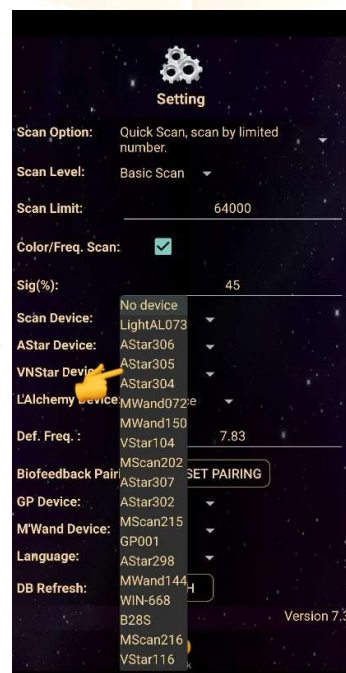
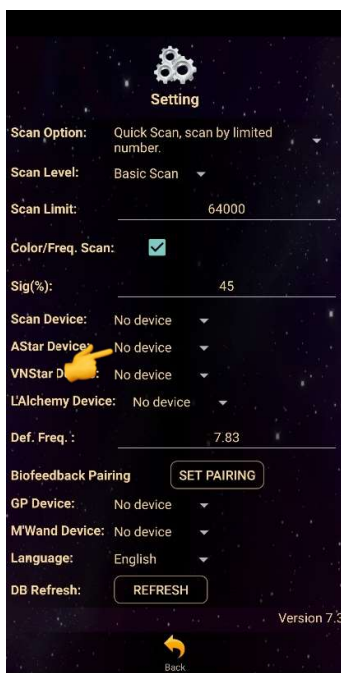
2. When the Light Mandalas device name appear, tap on it and insert password: "1234" then tap OK to pair it.



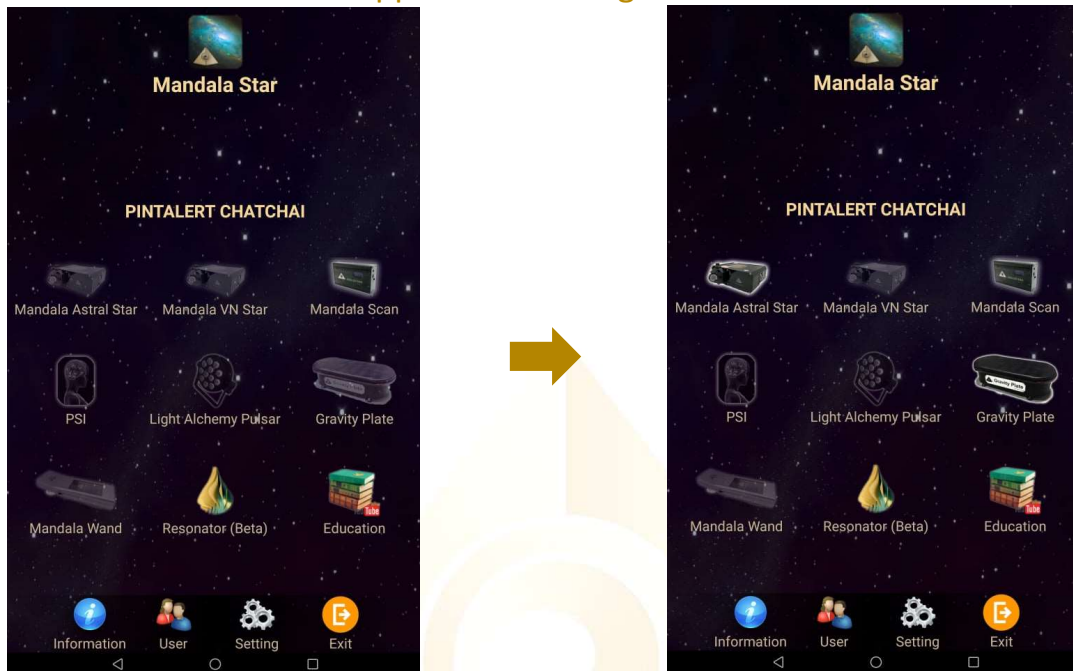
5.4 Application Settings

5.4.1 Bluetooth Connection Setup:

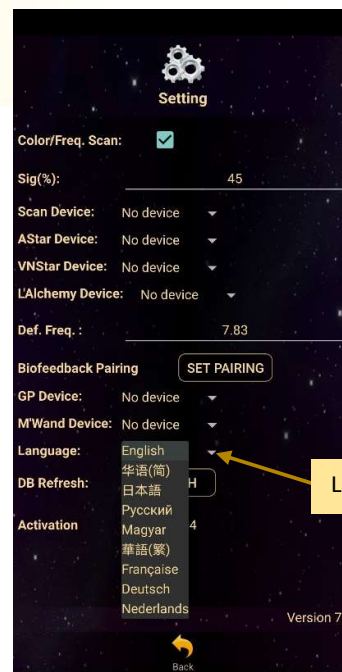
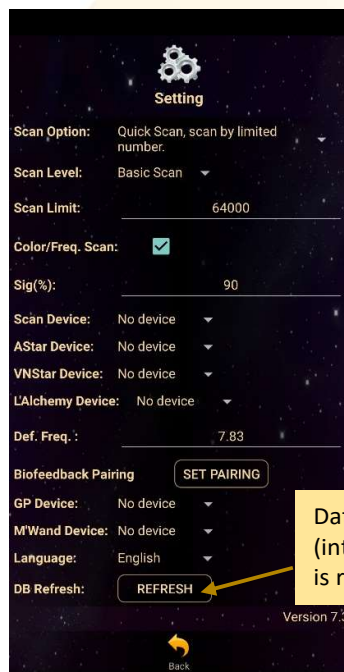
1. Go to the Mandala Star application **Setting**, tab on the device which you want to pair with and choose the specific device name. Then tap **Back**.



- The icon of the device in the Home Page will turn on (turn to colour icon) when the device name is set in the application setting.



5.4.2 General Setting



5.4.3 Mandala Dynamic Scan Setting

Scan Level:

1. Basic Scan: will scan on blue and green state.
2. Deep Scan: will scan only on green state.

Scan Option:

1. Quick Scan: scan by number added.
2. Bio Matrix Scan: scan by human body coherence. (No limit)

Colour/Freq. Scan:

Colour Scan for Astral Star and VN Star:

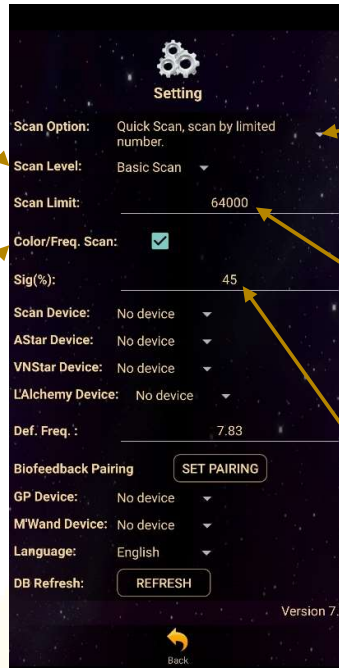
- Tick: different colors preset scan results
- Untick: white color preset scan results

Freq. Scan for Light Alchemy Pulsar:

- Tick: different frequencies preset scan results
- Untick: default frequency preset scan results

Freq. Scan for Mandala Wand:

- Tick: different color preset and laser scan results
- Untick: no color preset and all laser ON (FULL) scan results



Scan Limit:

Set the scan numbers for Quick Scan.

Sig. (%):

the significant of the scan result that focus on.

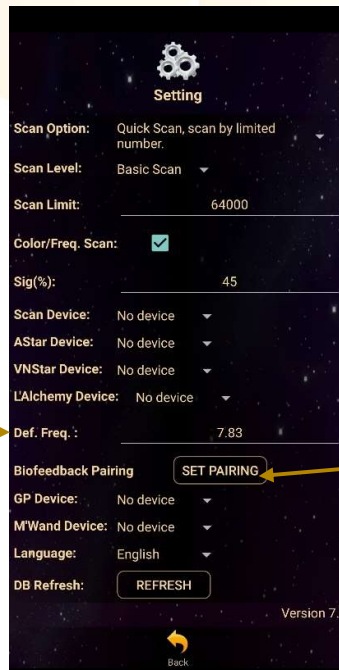
5.4.4 Light Alchemy Pulsar Setting

Default Frequency:

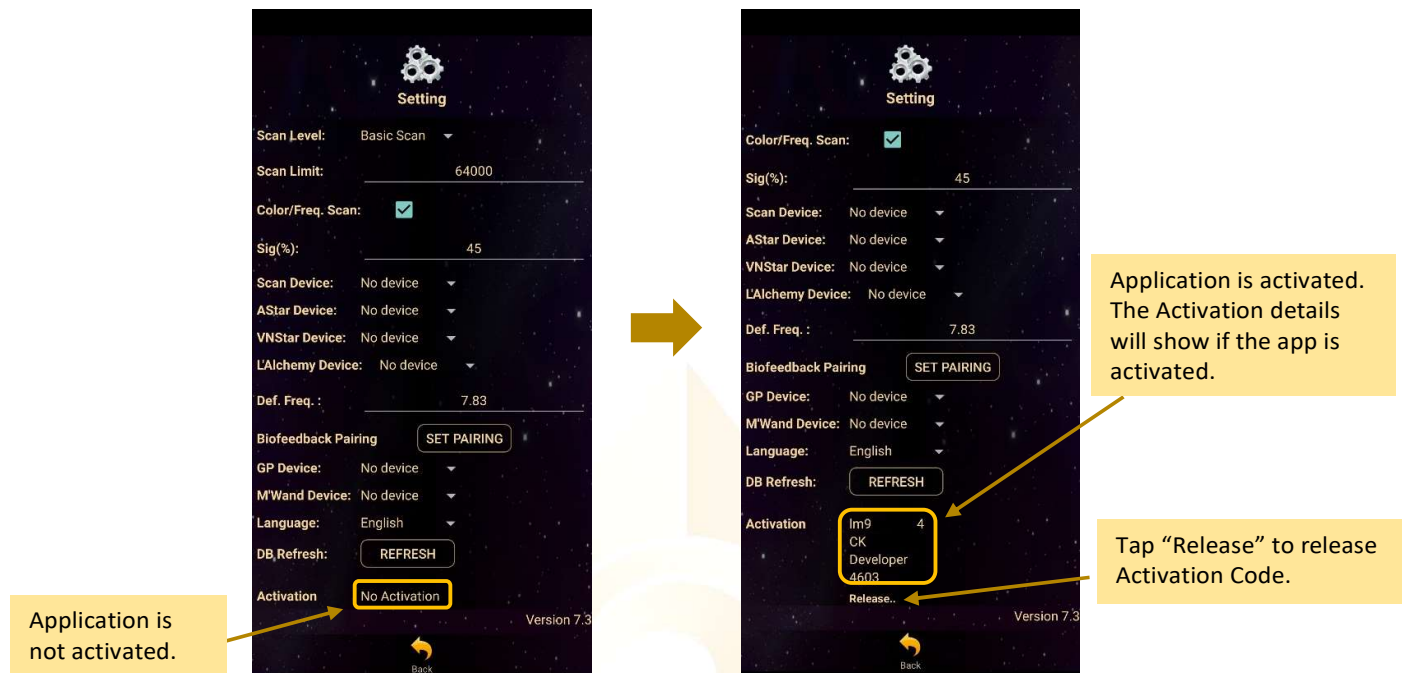
User can set the default frequency at here. The frequency for the Light Alchemy Pulsar Scan results will be in default frequency if the **Colour/Freq. Scan** option in the settings is unticked.

Biofeedback Pairing:

Biofeedback function activate and deactivate.



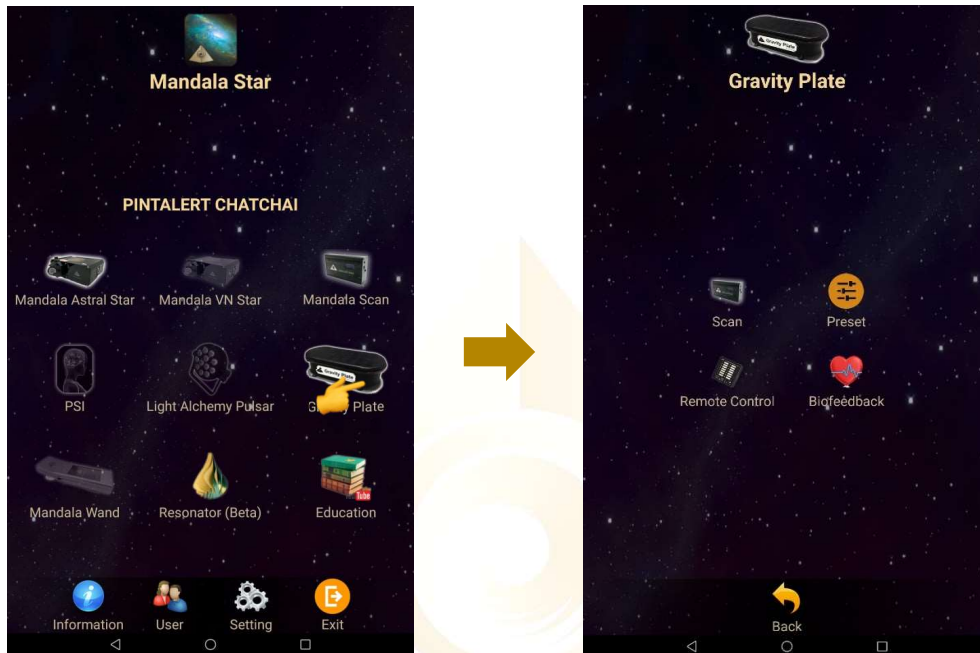
5.4.5 Application Activation Status



Each activation code can only be used up to maximum 5 different tablets. If the activation code is already used to activate 5 different tablets, and user wish to use the activation code on 6th tablet (e.g. change tablet), user has to release the activation code from either one of the previous activated tablet first.

6 Mandala Gravity Plate

Tap on the **Mandala Gravity Plate** icon in the Mandala Star Application Main Page then you will go to **Mandala Gravity Plate Home Page**.



6.1 Step Remote Control Mode

This mode functions exactly the same as the cable controller. User can use this program to control the vibration speed of the **Mandala Gravity Plate**.

Press to type frequency (frequency can be decimal numbers, Exp. 5.4, 12.8....)

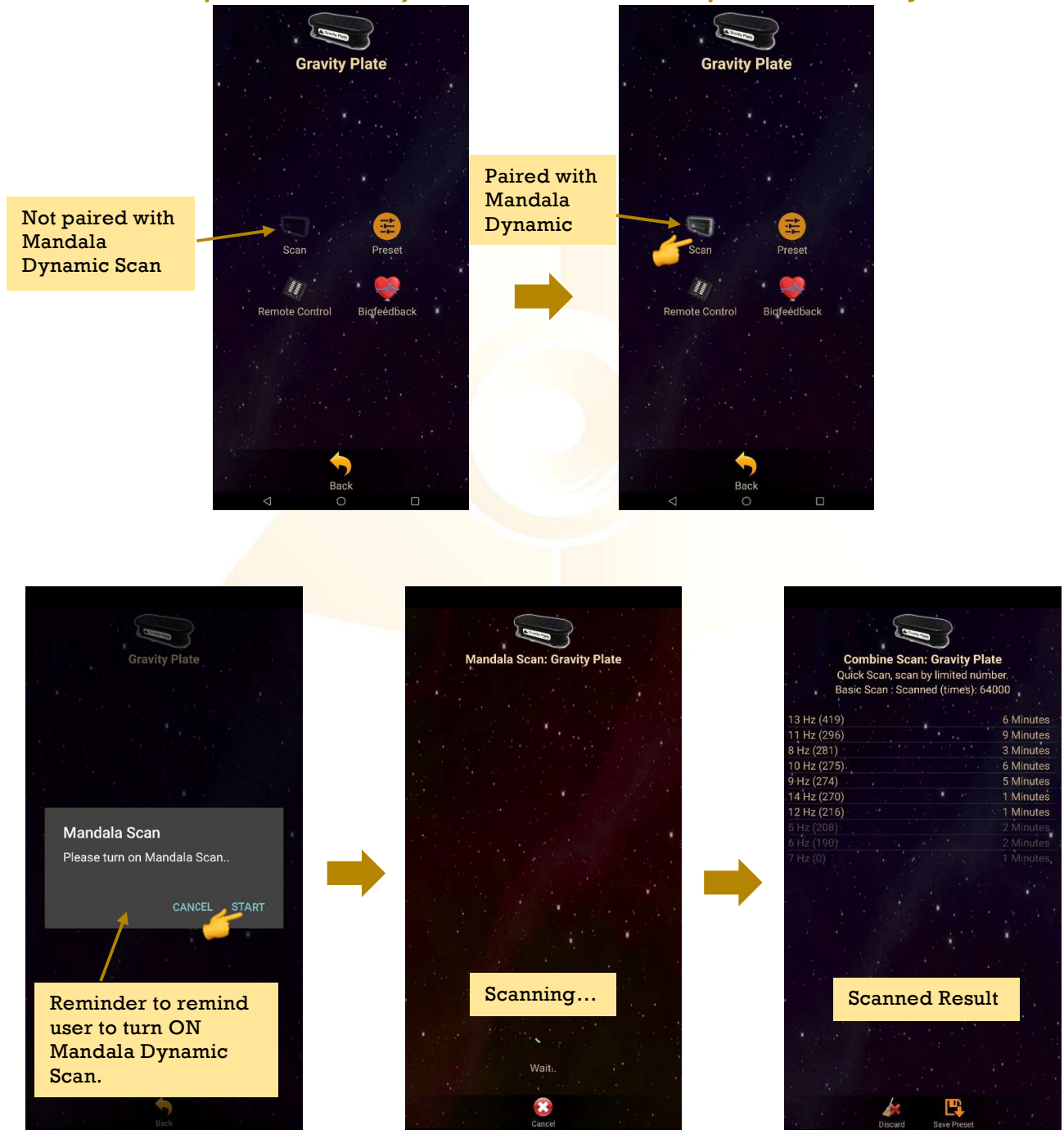
Connection Status:
This indicator shows if you are connected to the device.
Green → Connected
Red → Not connected

Press to STOP the device operation at any time.

6.2 Scan Mode

In this mode, user can use **Mandala Dynamic Scan** to scan the frequencies which is best suit for them at the present moment.

** Remember to pair Mandala Dynamic Scan with tablet prior to use this function.*

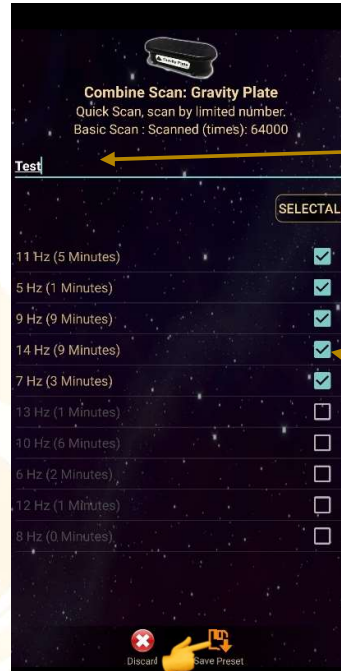
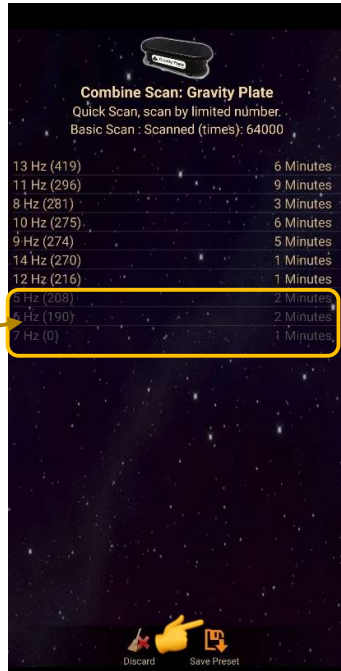


6.2.1 Create Scanned Preset

The scanned results will show after the scan is completed. Then, tab on **Save Preset**. Select the item you wish to save and tab on **Save Preset** again to save it into the Scanned Preset.

Grey colour items represent insignificant libraries in this scan.

* The significant % can be set by the user in the application settings.



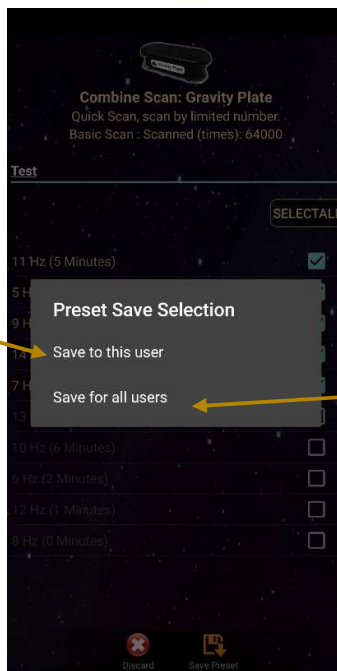
Edit preset name

Select all to save

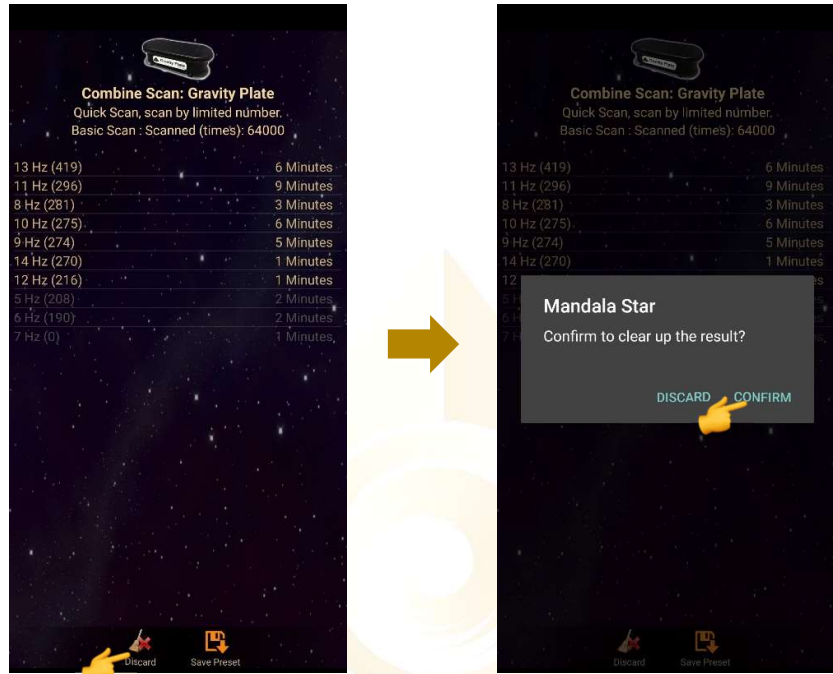
Select specific item to save

Save to this user. Only this user can see and play this scanned preset in the scanned preset library

Save for all users. Everyone can see and play this scanned preset in the scanned preset library

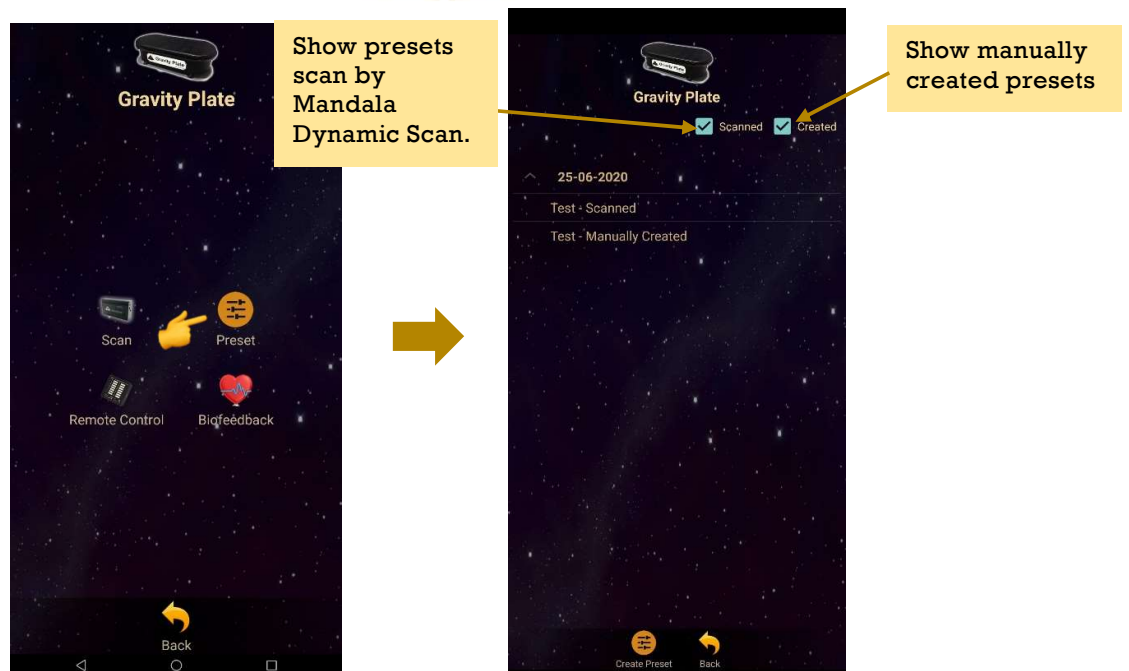


When the presets are saved, tab on **Discard** and select **Confirm** to go back to **Gravity Plate Home Page**.



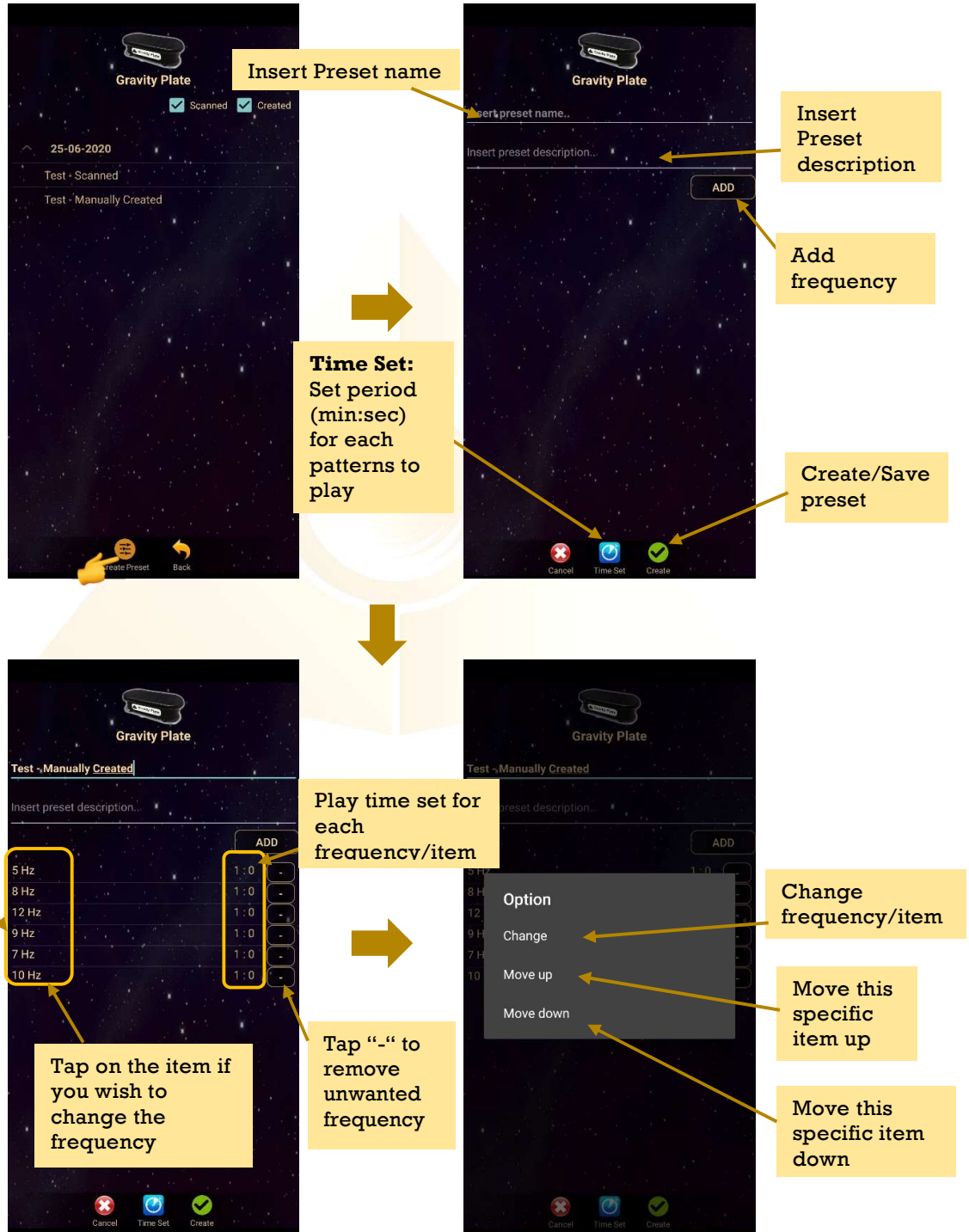
6.3 Preset

Tap on Preset and it will bring you to Preset Home Page.



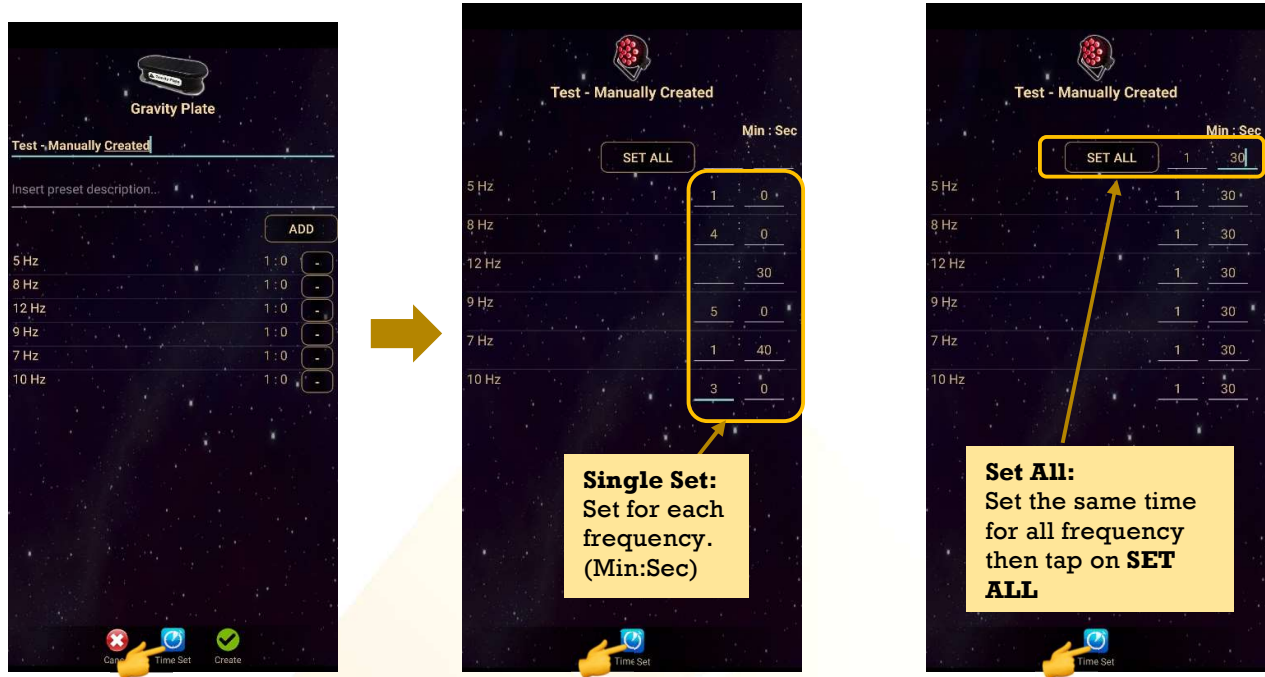
6.3.1 Create Preset

User can manually create/customize their own presets. When user is done with the preset setup, tap on **Create** to save it.



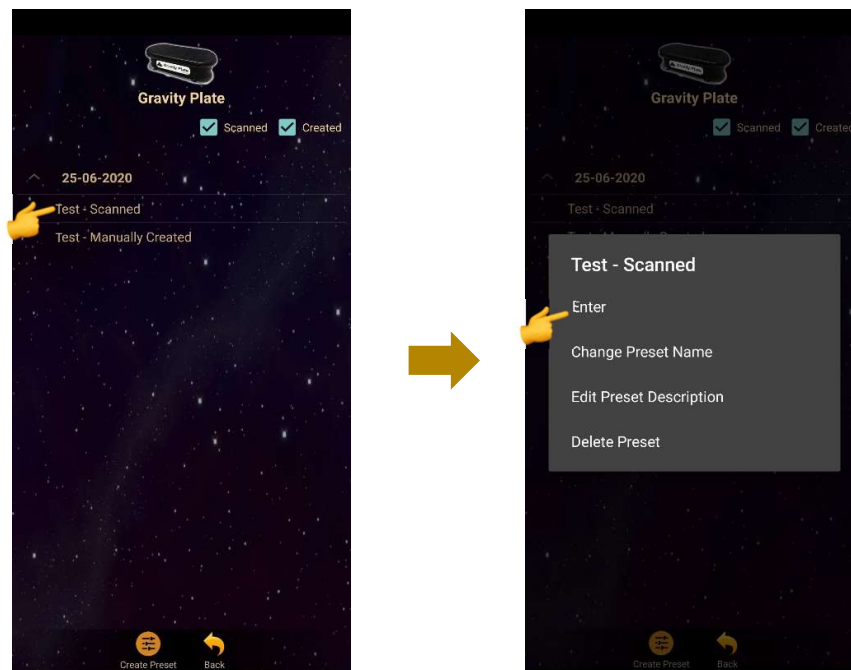
6.3.2 Preset Frequency Time Setup

User can customize the time for each frequencies by tap on **Time Set** and choose the method of **Single Set** or **Set All**. When the time is set, user can tap on **Time Set** again to save it.



6.4 Preset Play Mode

Tap on any preset in the **Preset** home page you wish to play. Then, tap on **Enter** to enter to play mode.





Tap play to play the created playlist.

Tick Repeat to repeat playlist/Looping

Tick Burst to set the numbers of repeat/loop.
In this example the burst is set to 3. This means the playlist will repeat 3 times then stop.

Interval is the break time between each loop.
In this example the interval for each loop is set to 60 seconds. This means the playlist will stop for 60 seconds before start to play the next loop.

Reset playlist

6.5 Biofeedback

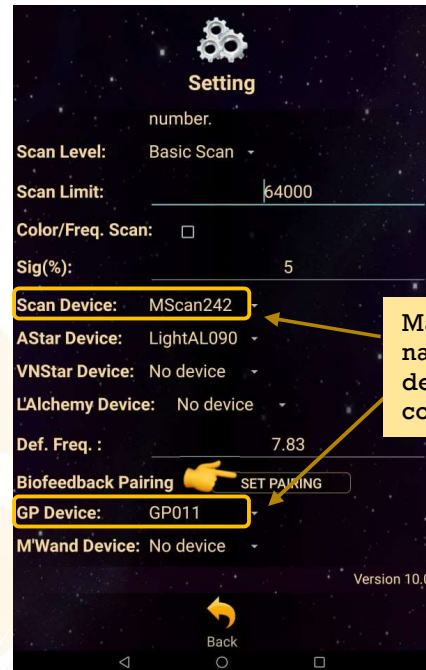
In **Biofeedback** mode, the vibration frequency of the Gravity Plate will change according to user's coherent state. Mandala Dynamic Scan will scan the most suitable vibration frequency for the user in real time and send the signal to Gravity Plate to play the frequency accordingly.

User can also use **Biofeedback** to observe current state during their meditation or spiritual practice. Therefore, user can easily know their current state and allow them to efficiently train their focus.

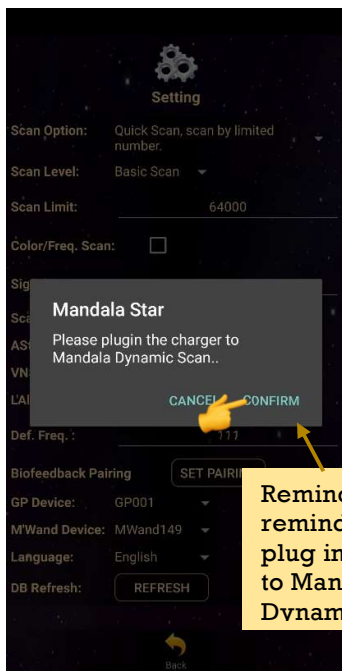
** please take note that Biofeedback mode has to be used together with Mandala Dynamic Scan.*

** Mandala Dynamic Scan has to be in charging state in order to activate its Bluetooth to pair with Gravity Plate.*

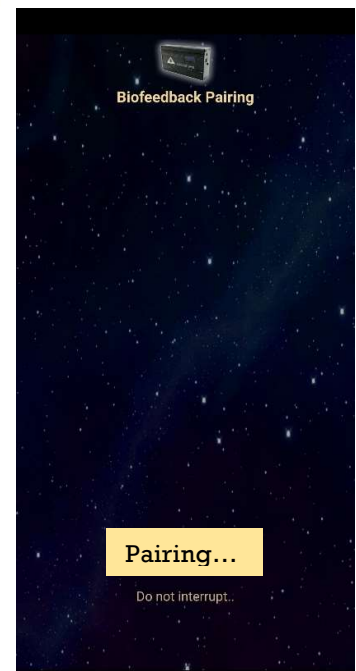
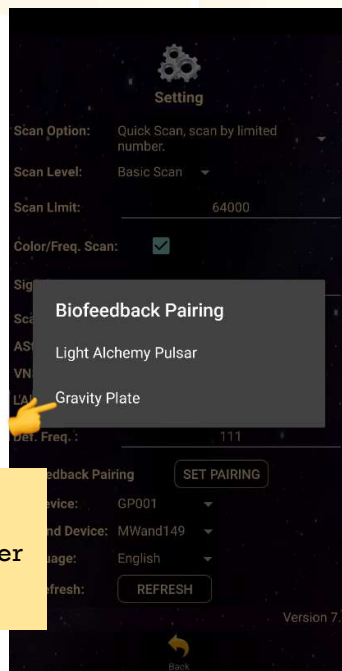
After the Mandala Dynamic Scan Charging Setup is done (please refer to Mandala Gravity Plate User Manual for the Mandala Dynamic Scan Charging Setup instruction), follow the following steps:

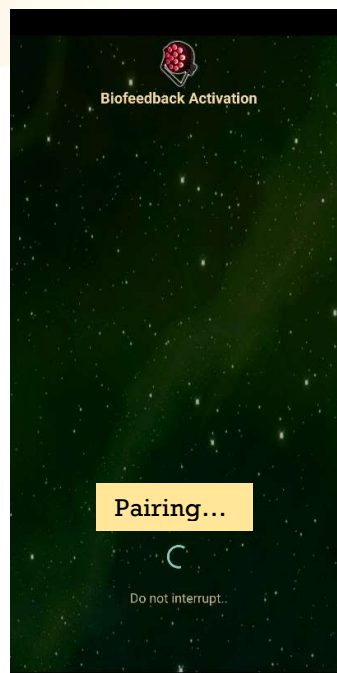
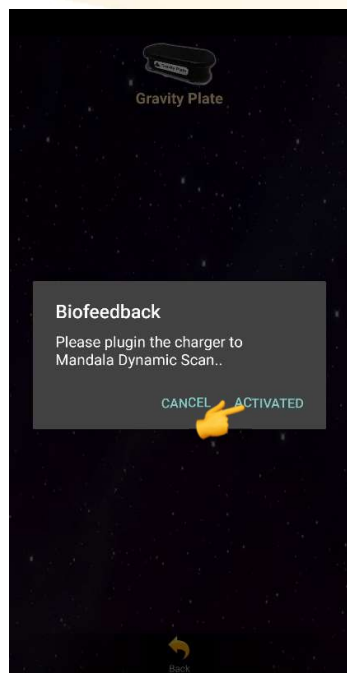
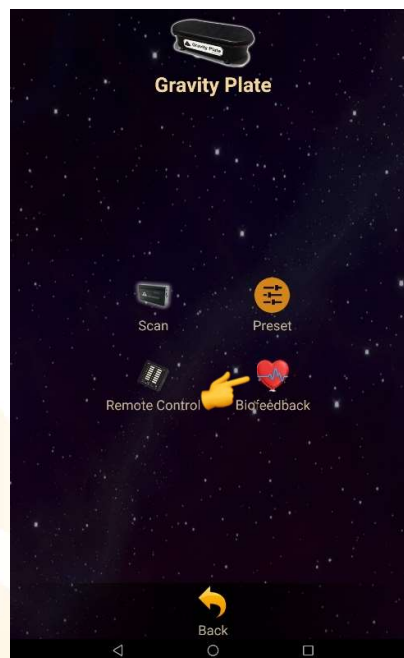


Make sure the name of these 2 devices are set correctly.



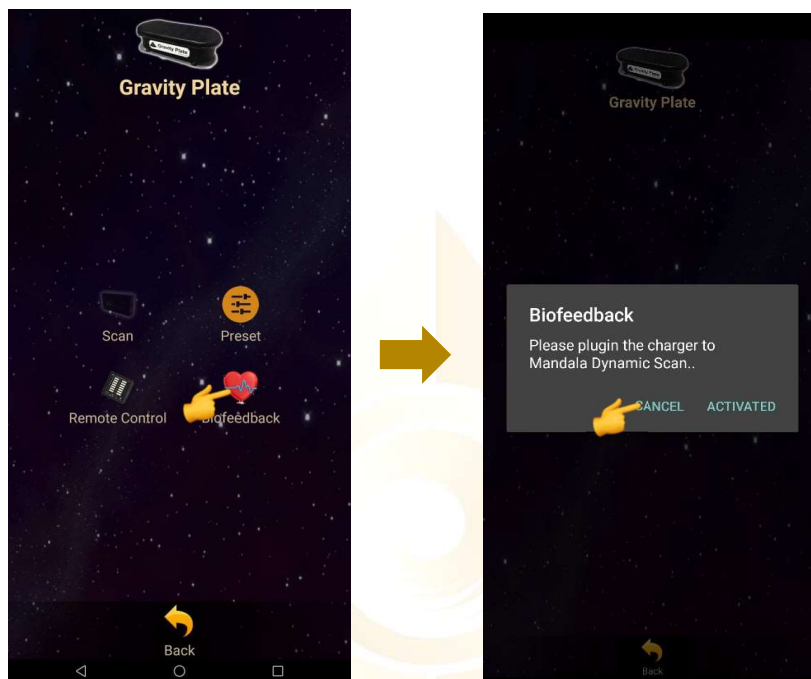
Reminder to remind user to plug in the charger to Mandala Dynamic Scan.





Once the pairing is successful, the Gravity Plate will vibrate according to user current state.

If user want to deactivate Biofeedback function, simply tab on the **Biofeedback** Icon again and choose **Cancel Deactivate**.



Shall there be any inquiry, please contact us for further support.

Light Mandalas Co., Ltd. (Thailand Headquarters):

- **Light Mandalas Website:** www.light-mandalas.com
- **Official:** info@light-mandalas.com
- **WeChat Support ID:** tianyuan0336,
- **Technical Support Email:** chatchai@light-mandalas.com
- **Training Support Email:** m.maychell@light-mandalas.com

Local agents contacts:

- **Japan:** japan@light-mandalas.com
- **Taiwan:** james.lu.bbl@gmail.com, acgangel650002@gmail.com, taiwan@light-mandalas.com
- **Hong Kong:** hongkong@light-mandalas.com
- **Singapore:** singapore@light-mandalas.com
- **Malaysia:** malaysia@light-mandalas.com
- **Hungary:** hungary@light-mandalas.com
- **Switzerland, Germany, Austria, Netherlands:** info@light-mandalas.ch
- **France, Spain:** france-spain@light-mandalas.com
- **USA:** usa@light-mandalas.com
- **New Zealand, Australia:** sally.yu@light-mandalas.com