



# Mandala Star App User Manual

## Psycho Spiritual Integration (PSI)



Please read the manual before using the tools.

Version 1.0

## Table of Contents

<b>1</b>	<b><i>Android Device Requirement</i></b> .....	<b>2</b>
<b>2</b>	<b><i>Mobile Application End-User License Agreement</i></b> .....	<b>3</b>
<b>3</b>	<b><i>Application Download and Installation</i></b> .....	<b>4</b>
<b>4</b>	<b><i>Mandala Star Application Main Page Features</i></b> .....	<b>7</b>
<b>5</b>	<b><i>Application Setup</i></b> .....	<b>8</b>
5.1	<b><i>New User Setup</i></b> .....	<b>8</b>
5.2	<b><i>Application Activation</i></b> .....	<b>9</b>
5.3	<b><i>Tablet Bluetooth Connection Setup</i></b> .....	<b>9</b>
5.4	<b><i>Application Settings</i></b> .....	<b>10</b>
5.4.1	<b><i>Bluetooth Connection Setup:</i></b> .....	<b>10</b>
5.4.2	<b><i>General Setting</i></b> .....	<b>12</b>
5.4.3	<b><i>Mandala Dynamic Scan Setting</i></b> .....	<b>Error! Bookmark not defined.</b>
5.4.4	<b><i>Light Alchemy Pulsar Setting</i></b> .....	<b>13</b>
5.4.5	<b><i>Application Activation Status</i></b> .....	<b>13</b>
<b>6</b>	<b><i>Psycho Spiritual Integration (PSI)</i></b> .....	<b>14</b>
6.1	<b><i>Library</i></b> .....	<b>15</b>
6.2	<b><i>Scan</i></b> .....	<b>16</b>
6.2.1	<b><i>Pre Scan and Meridian Pre Scan</i></b> .....	<b>16</b>
6.2.2	<b><i>Select Presets - Manually Select Specific Library to Scan</i></b> .....	<b>18</b>
6.2.3	<b><i>Combine Scan</i></b> .....	<b>18</b>
6.2.4	<b><i>Multiple Scan</i></b> .....	<b>20</b>
6.3	<b><i>Preset</i></b> .....	<b>22</b>
6.3.1	<b><i>Create Preset</i></b> .....	<b>23</b>
6.3.2	<b><i>Preset Play Mode</i></b> .....	<b>24</b>
6.3.3	<b><i>Report</i></b> .....	<b>26</b>
6.4	<b><i>Audio Mode</i></b> .....	<b>26</b>

## 1 Android Device Requirement

Mandala Star application can only be operated with **Android mobile phone or tablet**.

### Minimum requirement:

**Operating System:** Android OS  
**Android version:** Android 8.0 or higher  
**Others:** with Bluetooth and WIFI function



## 2 Mobile Application End-User License Agreement

Please read this Mobile Application End-User License Agreement (“EULA”) carefully before downloading or using the Mandala Star App mobile application (“the application”). This EULA governs your use of the application, which will allow you to access Light Mandalas library and control Light Mandalas tools by your mobile device. Your use of the application indicates your consent to this EULA.

1. **License.** Light Mandalas Co., Ltd. grants you a revocable, non-exclusive, non-transferable, limited license to download, install, and use the application for your personal and internal business purposes strictly in accordance with this EULA

2. **Your Account.** Your use of the application requires that you have an account with Light Mandalas.

3. **Changes to this EULA.** Light Mandalas reserves the right to modify this EULA. Your continued use of the application after Light Mandalas publishes notice of changes to this EULA indicates your consent to the updated terms.

4. **No Included Maintenance and Support.** Light Mandalas may deploy changes, updates, or enhancements to the application at any time. Light Mandalas may provide maintenance and support for the application, but has no obligation whatsoever to furnish such services to you and may terminate such services at any time without notice. You acknowledge that Google has an obligation to furnish any maintenance and/or support services in connection with the application.

5. **Acceptable Use.** You agree that you will not use or encourage others to use the application in a way that could harm or impair others’ use of the Mobile App.

6. **Privacy.** Light Mandalas don’t collect your information from your application. Information inside the application will be private.

7. **No Warranty.** Your use of the application is at your sole risk. The application is provided on an “As Is” and “As Available” basis. Light Mandalas expressly disclaims all warranties of any kind.

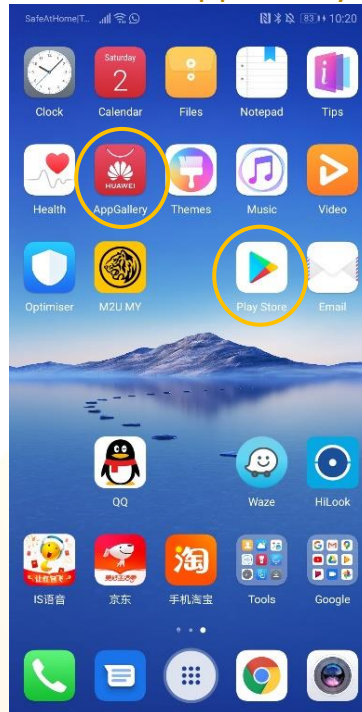
8. **Suspension and Termination of the application.** Light Mandalas reserves the right to suspend or terminate your access to the application at any time.

9. **Intellectual Property Rights.** In the event of a third party claim that the application, or your possession and use of the application, infringes third party’s intellectual property rights, Light Mandalas, will be solely responsible for the investigation, defense, settlement and discharge of any such intellectual property infringement claim.

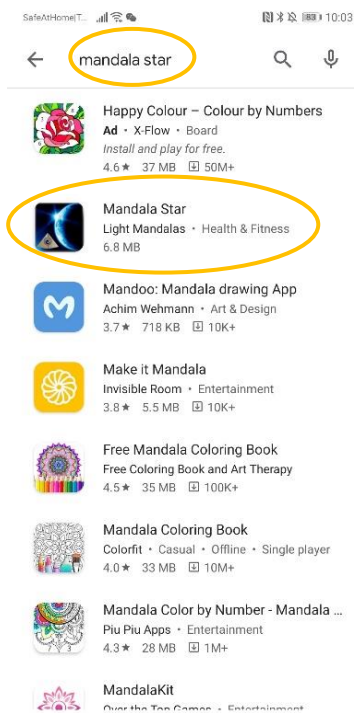
### 3 Application Download and Installation

User can download Mandala Star app from either “Google Play Store” or “Huawei AppGallery”

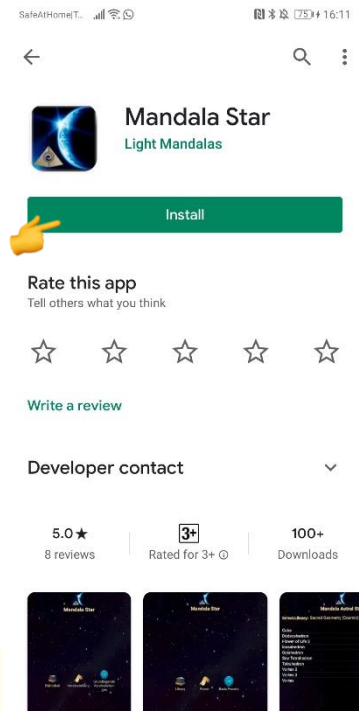
1. Open “Google Play Store” or “Huawei AppGallery” application



2. In the “Google Play Store” Search bar, type “Mandala Star”  
In the “Huawei AppGallery” Search bar, type “星光曼陀罗”

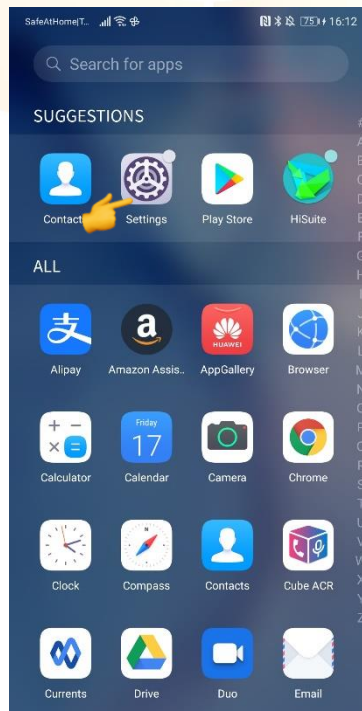


### 3. Tap on Install to install the app.

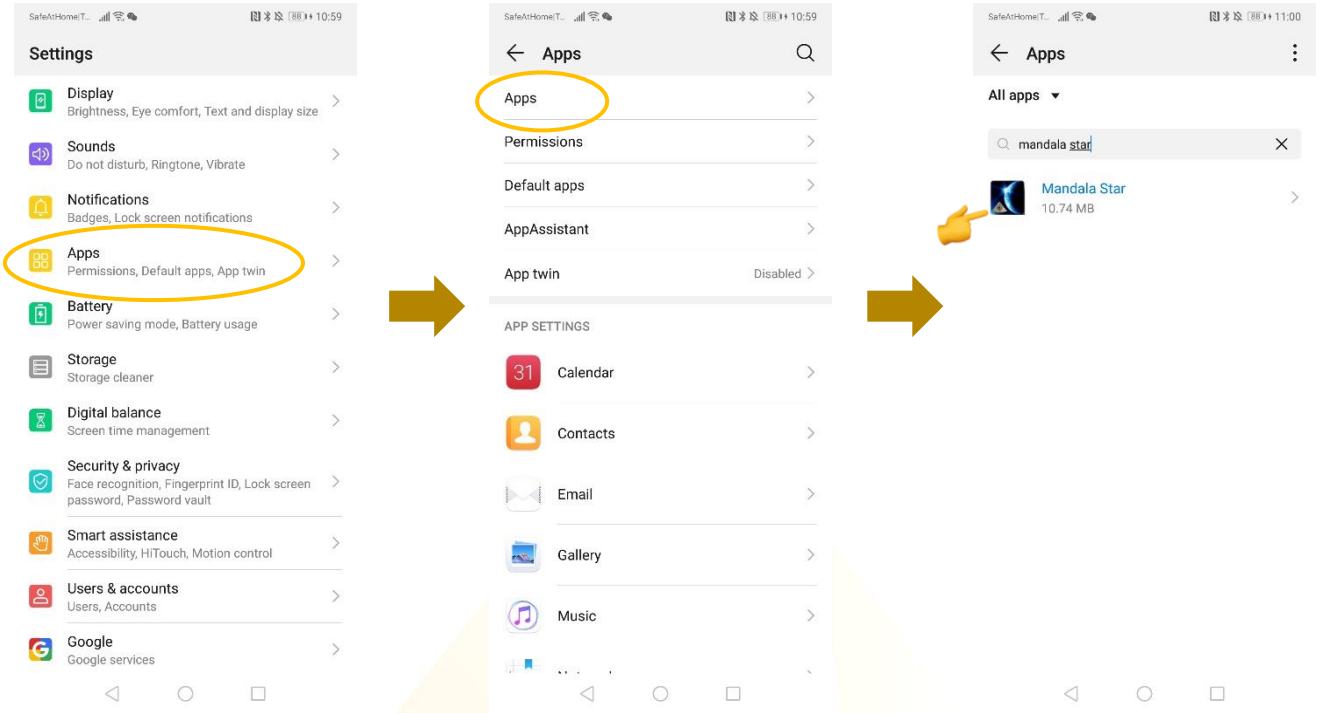


### 4. Allow application permission

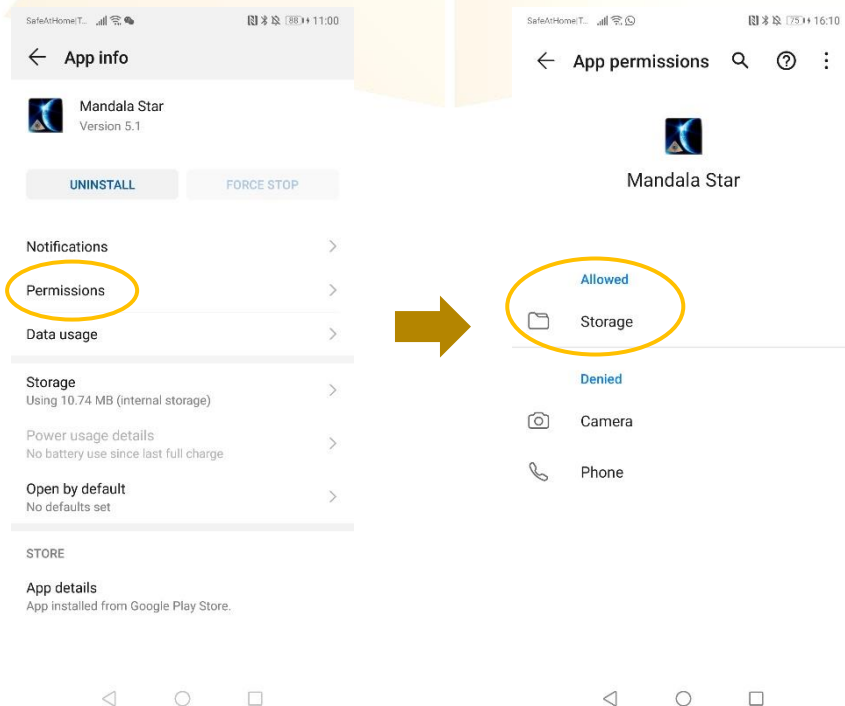
#### 4.1 Go to Tablet Settings



### 4.2 Go to “Apps” then tap on “Apps” and search for “Mandala Star”.



### 4.3 Tap on “Permissions” then switch on “Storage”



## 4 Mandala Star Application Main Page Features



1 - 7 are different Light Mandalas devices programs. User can use specific program to operate specific device.

### 1. Mandala Astral Star

### 2. Mandala VN Star

### 3. Mandala Scan

### 4. Psycho Spiritual Integration – PSI

- PSI library has to be purchased prior to use this program
- Has to use with Mandala Scan.

### 5. Light Alchemy Pulsar

### 6. Gravity Plate

### 7. Mandala Wand

**8. Information:** Provide user the latest application update information.

**9. User:** Create new user profile

**10. Setting:** Application Setting – Bluetooth Device Pairing, Mandala Scan Setting, Light Alchemy Setting, Language setting, Database refresh and Activation Code Release

**11. Activation:** Activate the application with activation code

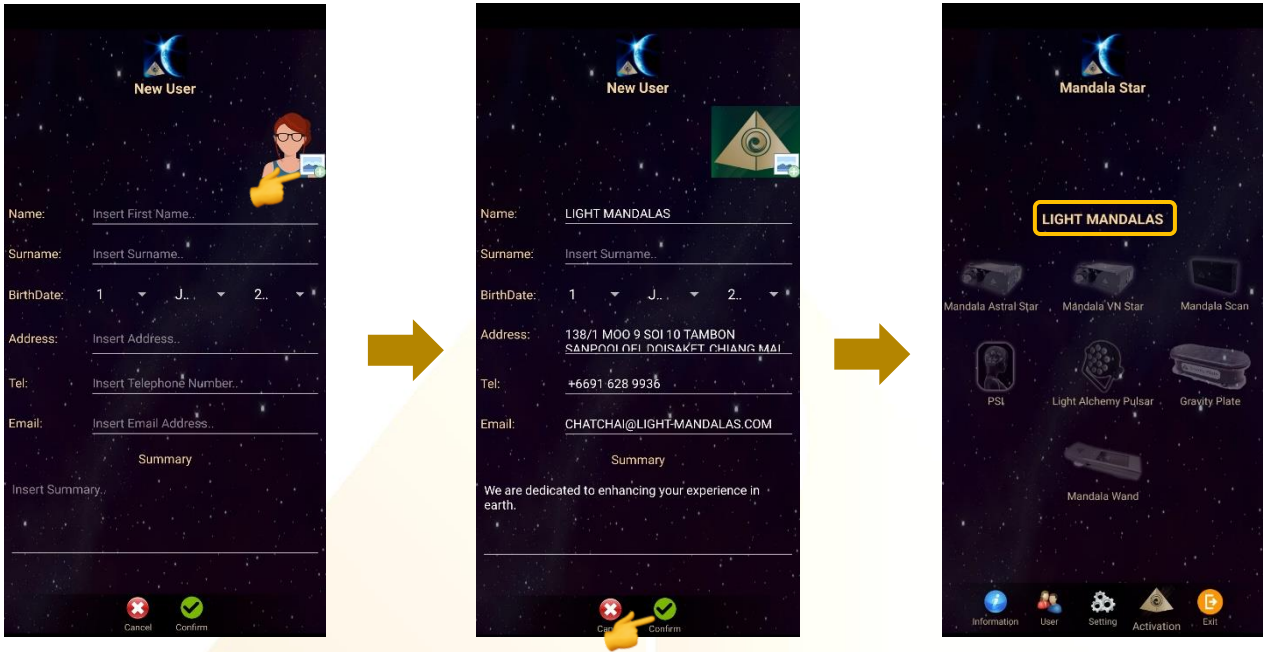
**12. Exit:** Exit from the application



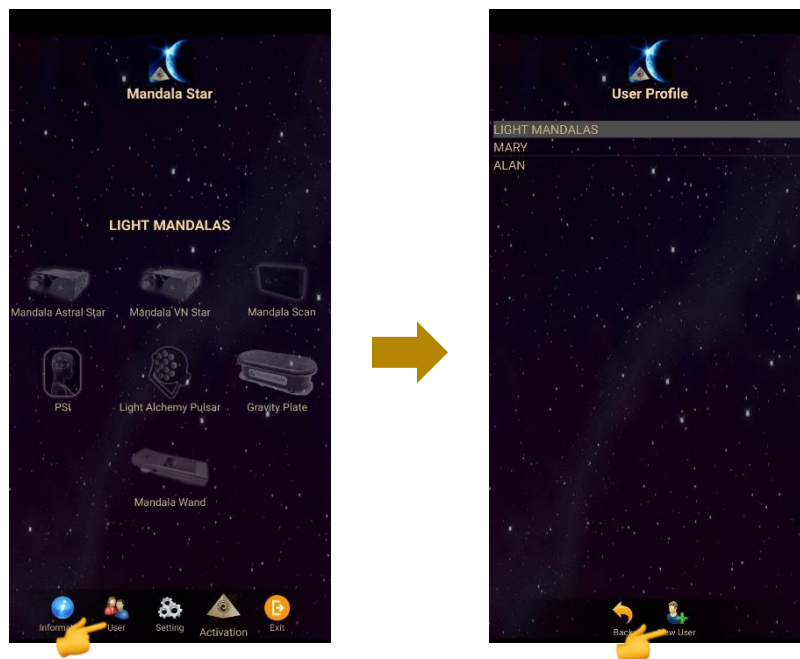
## 5 Application Setup

### 5.1 New User Setup

Once the app is opened, the “New User Create” will prompt out. Fill in the User profile and then tap on confirm to create new user profile. User also can insert their profile picture by tap on the picture insert. The user’s name will appear on the Home Page.



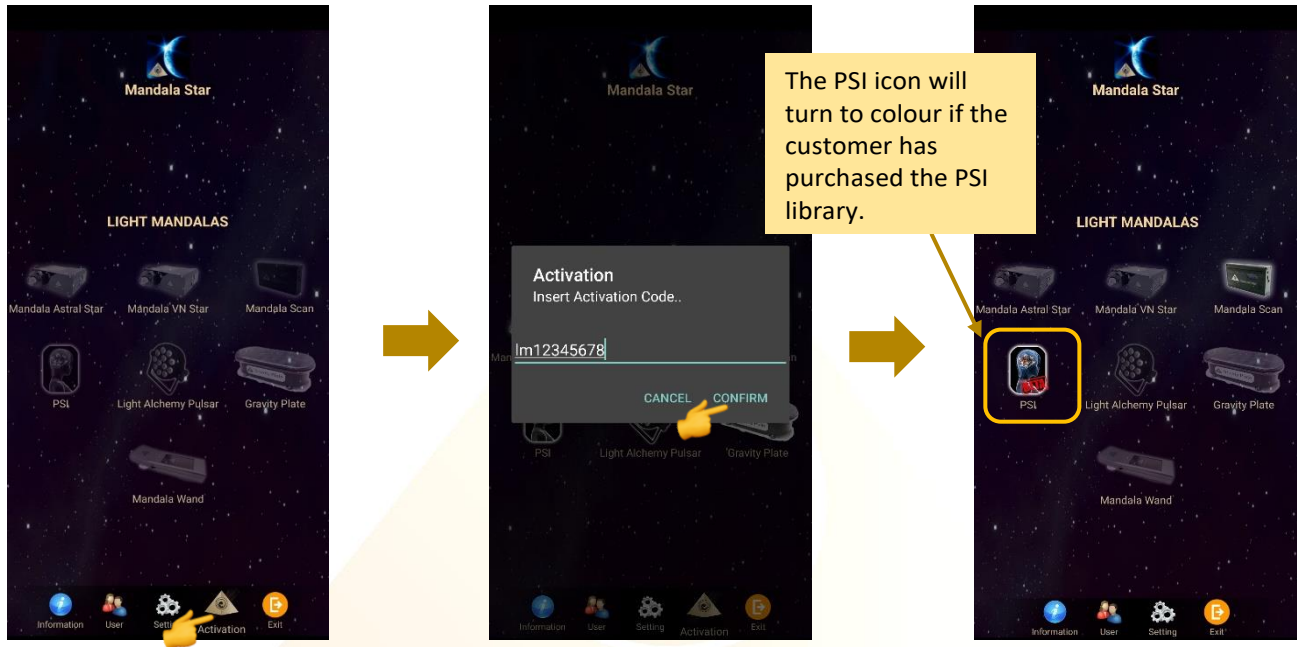
User can also add new user manually. **User → New User**



## 5.2 Application Activation

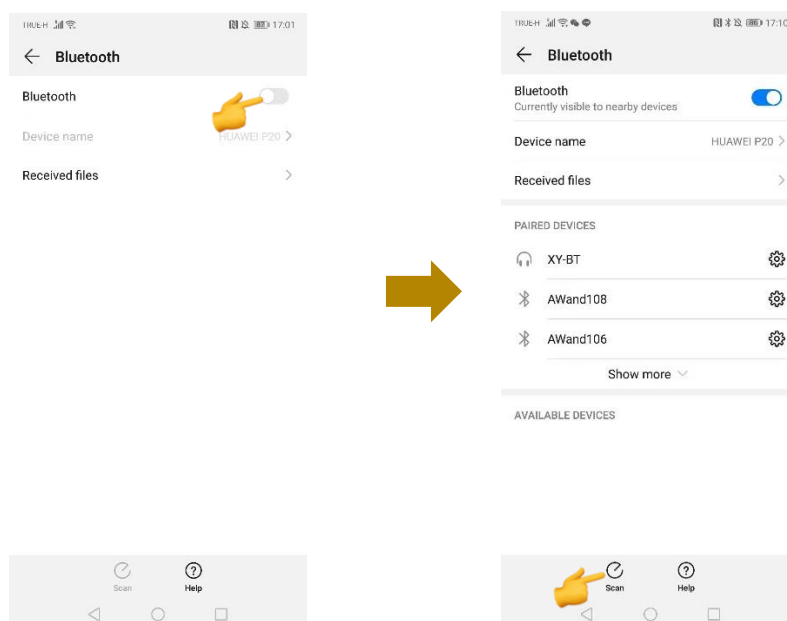
Tap on “**Activation**” to activate the application. Insert the activation code and tap confirm.

*\*User can request activation code from the dealer/local agent.*

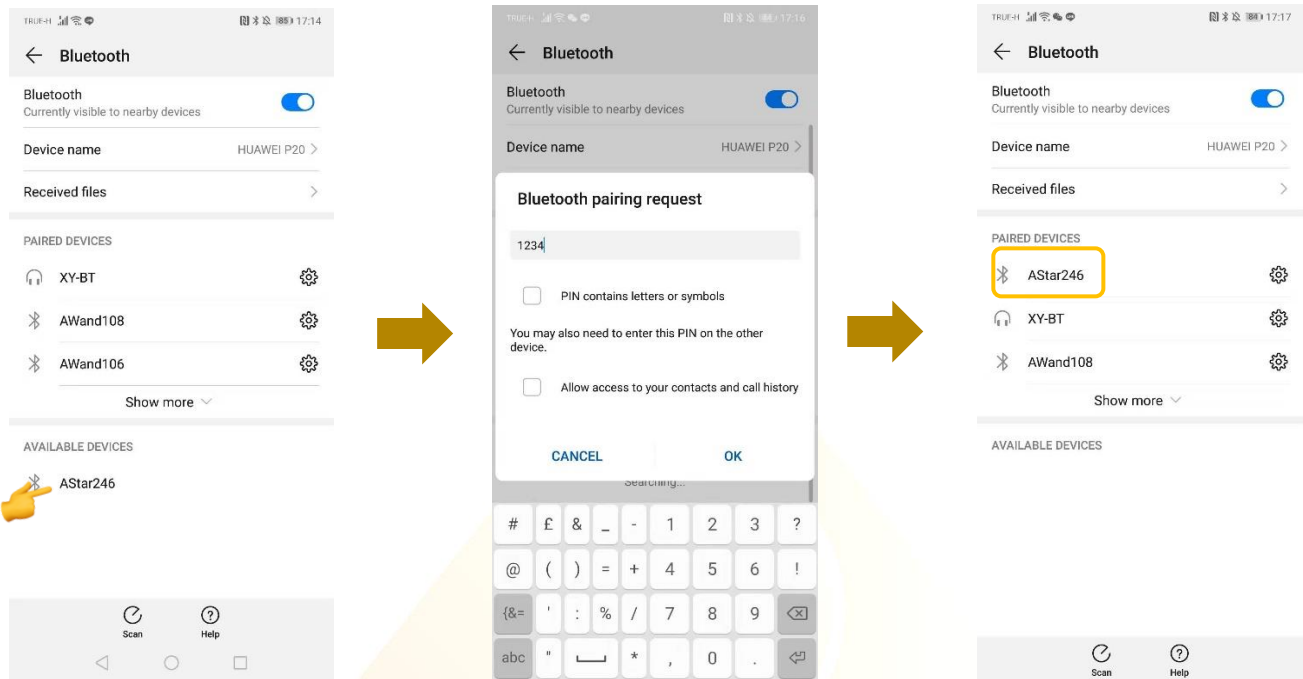


## 5.3 Tablet Bluetooth Connection Setup

1. In the android device, go to Setting then turn ON the Bluetooth and tap on scan to scan for the Light Mandalas device name.



- When the Light Mandalas device name appear, tap on it and insert password: “1234” then tap OK to pair it.

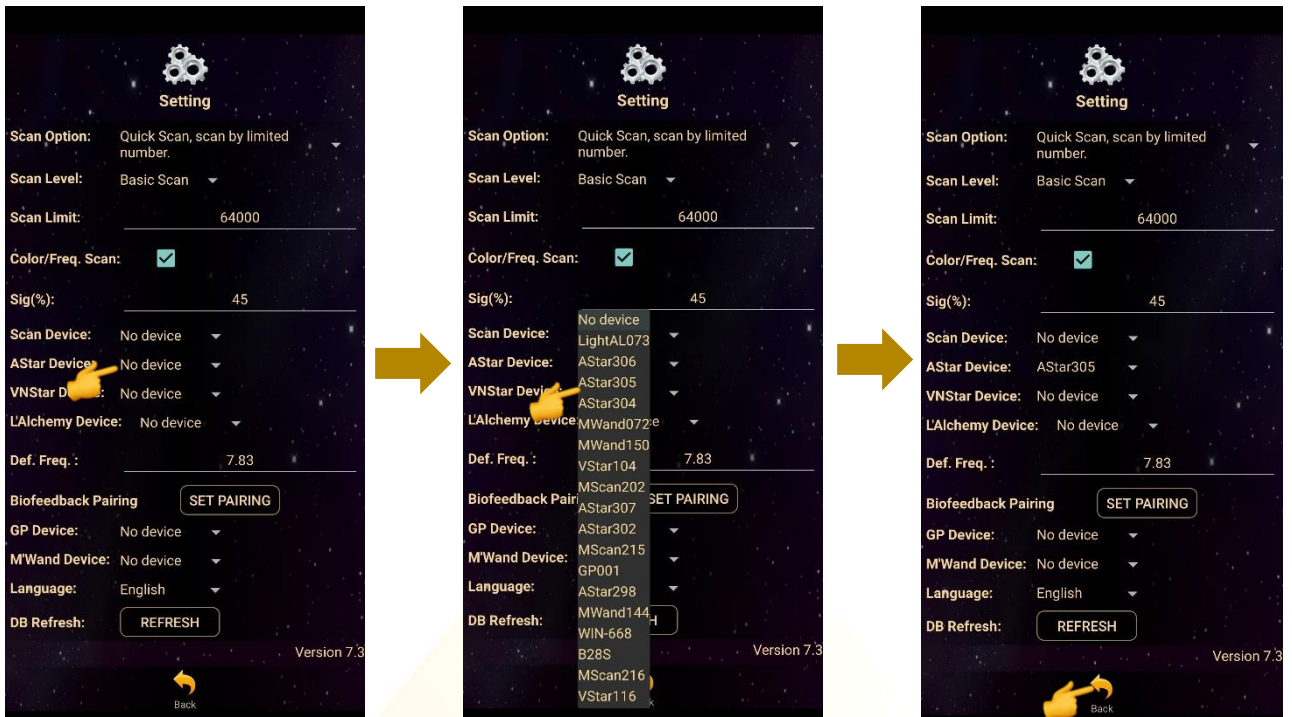


## 5.4 Application Settings

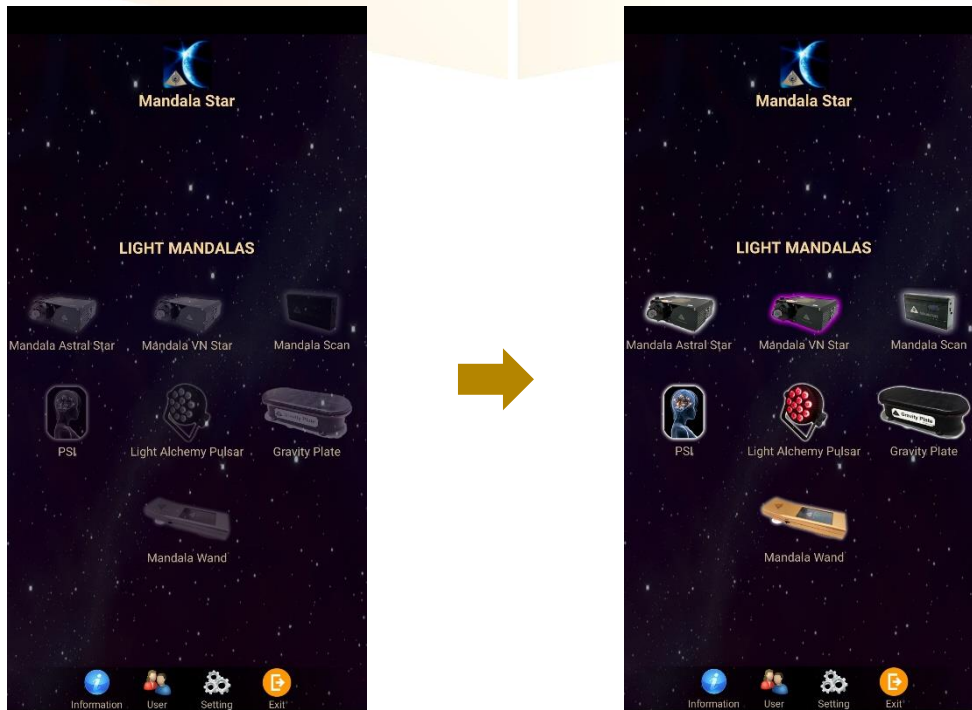
### 5.4.1 Bluetooth Connection Setup:

- Go to the Mandala Star application **Setting**, tab on the device which you want to pair with and choose the specific device name. Then tap **Back**.

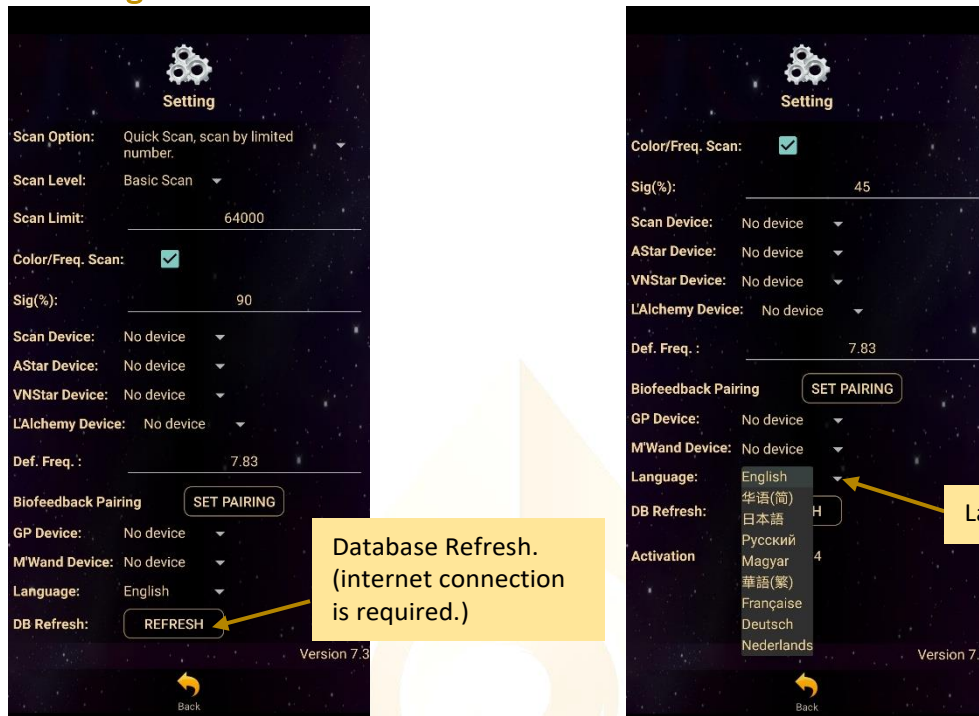




2. The icon of the device in the Home Page will turn on (turn to colour icon) when the device name is set in the application setting.



### 5.4.2 General Setting



### 5.4.3 Mandala Dynamic Scan Setting

**Scan Level:**

- 1. Basic Scan: will scan on blue and green state.
- 2. Deep Scan: will scan only on green state.

**Colour/Freq. Scan:**

**Colour Scan for Astral Star and VN Star:**

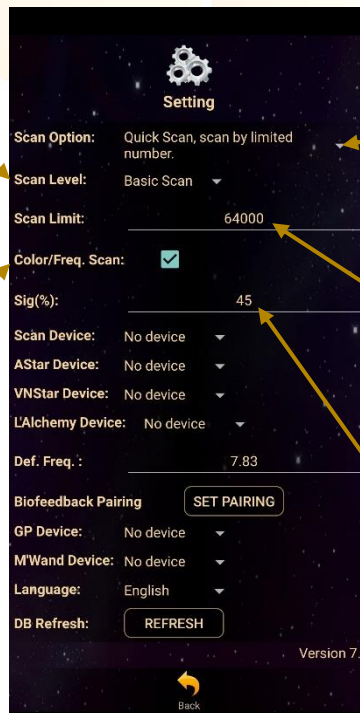
- Tick: different colors preset scan results
- Untick: white color preset scan results

**Freq. Scan for Light Alchemy Pulsar:**

- Tick: different frequencies preset scan results
- Untick: default frequency preset scan results

**Freq. Scan for Mandala Wand:**

- Tick: different color preset and laser scan results
- Untick: no color preset and all laser ON (FULL) scan results



**Scan Option:**

- 1. Quick Scan: scan by number added.
- 2. Bio Matrix Scan: scan by human body coherence. (No limit)

**Scan Limit:**

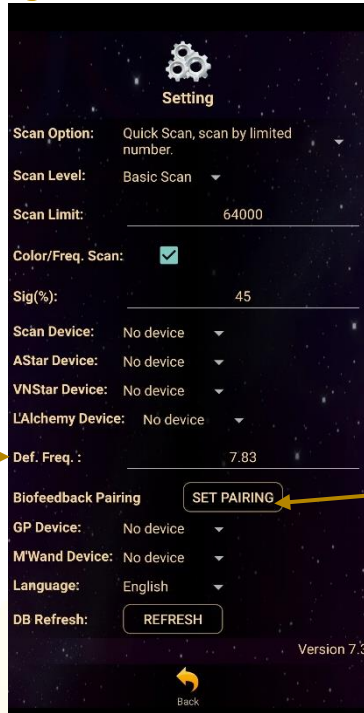
Set the scan numbers for Quick Scan.

**Sig. (%):**

the significant of the scan result that focus on.

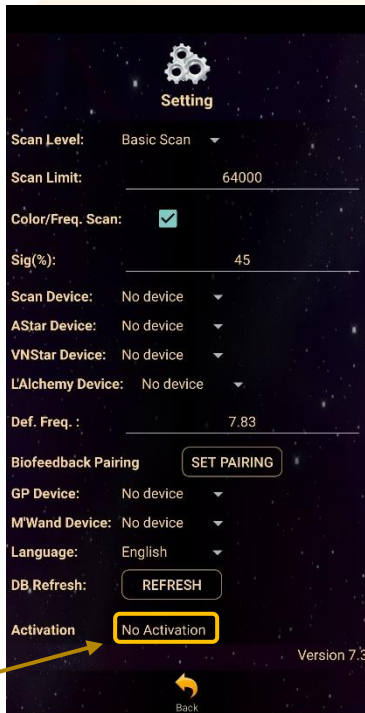
### 5.4.4 Light Alchemy Pulsar Setting

**Default Frequency:**  
User can set the default frequency at here. The frequency for the Light Alchemy Pulsar Scan results will be in default frequency if the **Colour/Freq. Scan** option in the settings is unticked.

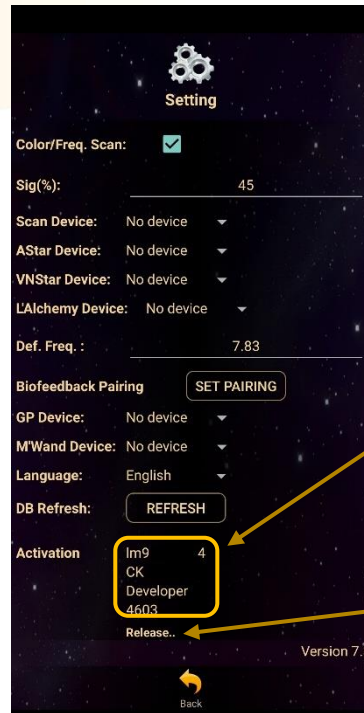


**Biofeedback Pairing:**  
Biofeedback function activate and deactivate.

### 5.4.5 Application Activation Status



Application is not activated.



Application is activated. The Activation details will show if the app is activated.

Tap "Release" to release Activation Code.

Each activation code can only be used up to maximum 5 different tablets. If the activation code is already used to activate 5 different tablets, and user wish to use the activation code on 6<sup>th</sup> tablet (e.g. change tablet), user has to release the activation code from either one of the previous activated tablet first.

## 6 Psycho Spiritual Integration (PSI)

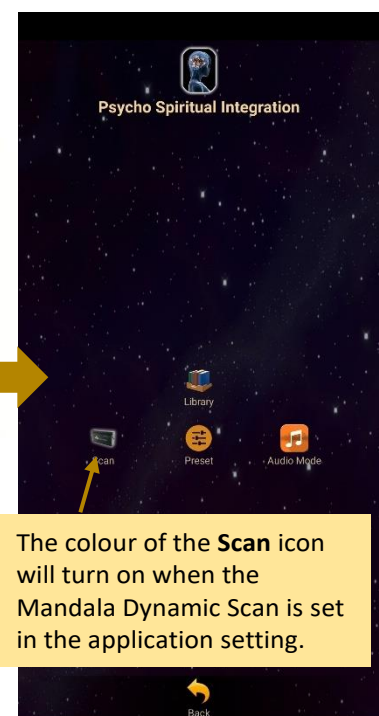
Tap on the **PSI** icon in the **Mandala Star Application Main Page** then you will go to **PSI Home Page**.

*\* please take note that the PSI program can only be used if user has purchased PSI Library.*

For the first time use of the PSI program, during the initialization process, all the **Positive Affirmation Audios** will be downloaded from online database and saved into the program. This process takes several minutes depending on the internet speed.

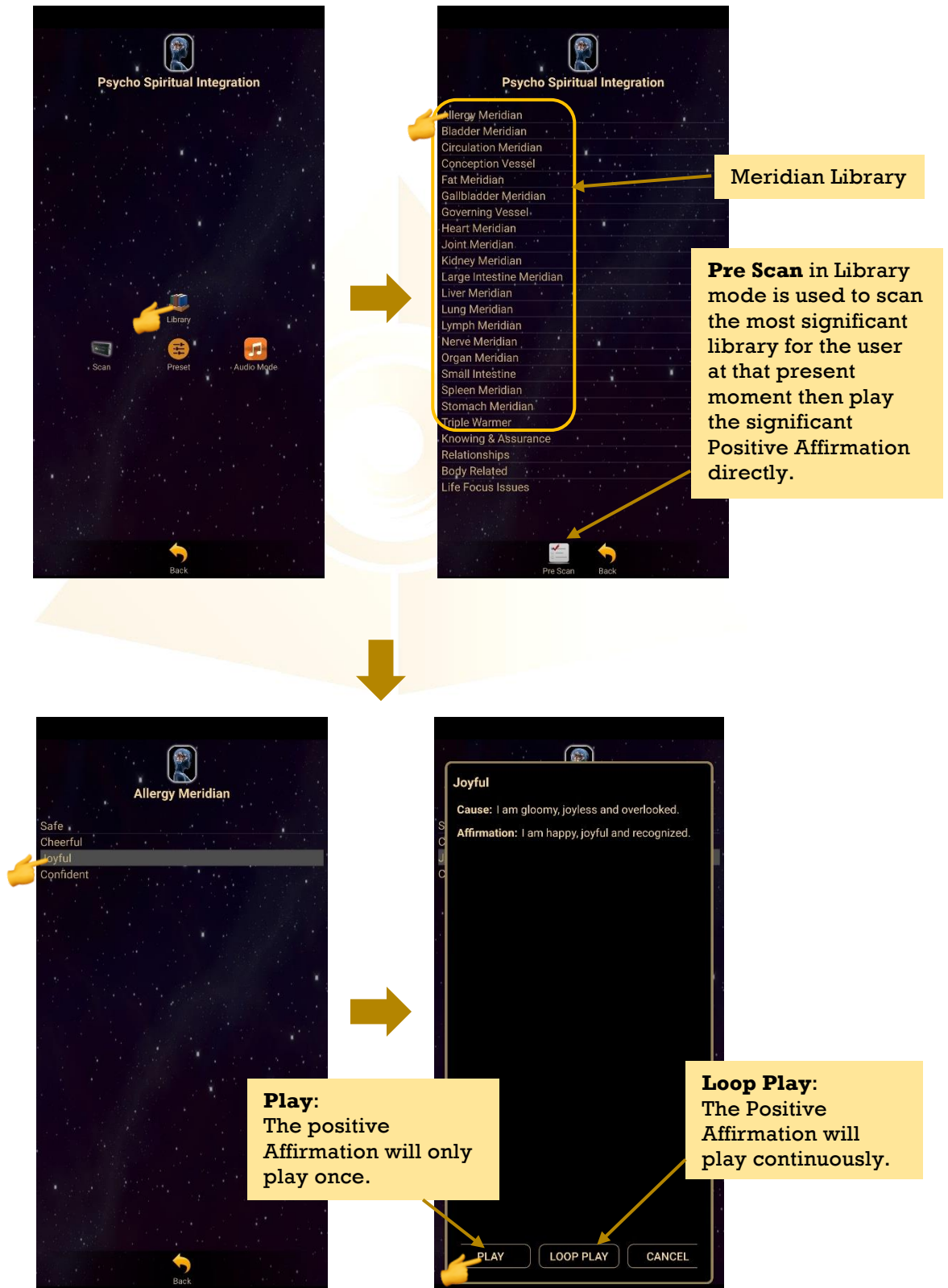
*\* The android device must connect to internet prior to download the audios mp3.*

*\* DO NOT interrupt the process of downloading.*



## 6.1 Library

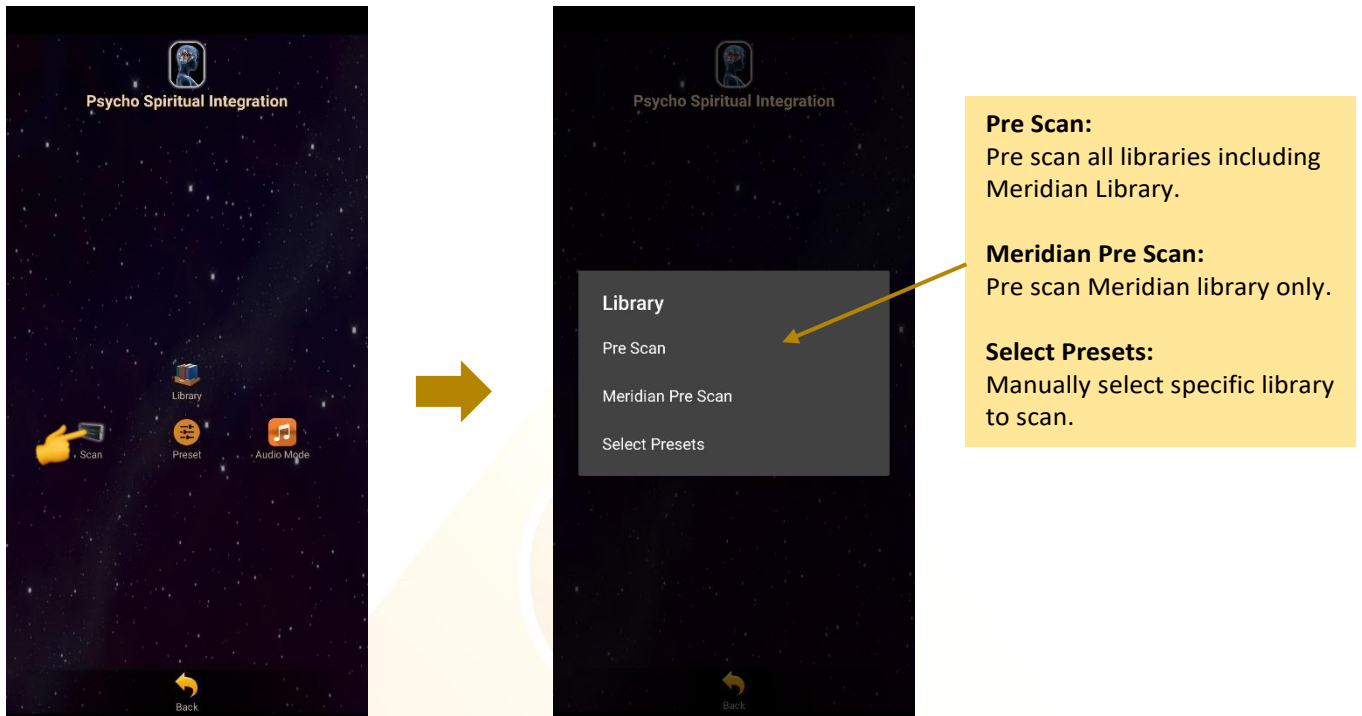
User can play the **Positive Affirmation** directly in this **Library** mode. Tab on any library and select the Positive Affirmation that you wish to play, then tab **Play** or **Loop Play** to play it.





## 6.2 Scan

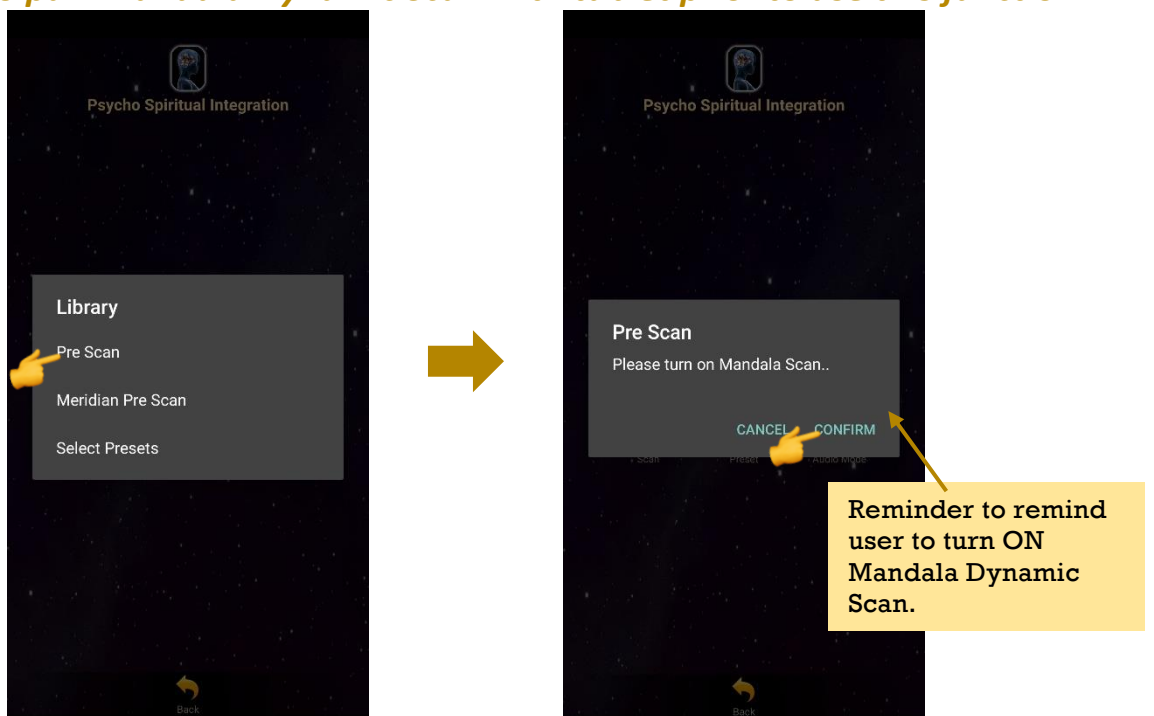
In **Scan** mode, user can scan for their most significant libraries at that present moment and saved it to create preset to play.



### 6.2.1 Pre Scan and Meridian Pre Scan

This function will help user to choose the priority/significant libraries for further scan by user body coherence.

**\* Remember to pair Mandala Dynamic Scan with tablet prior to use this function.**



The number of scan for this library during this scan.

\* the higher the number of scan of the item, the more significant the item is in this scan, and so on.

Grey colour items represent insignificant libraries in this scan.

\* The significant % can be set by the user in the application settings.

User can select their desired libraries to continue the **Combine Scan** or **Multiple Scan**.

Select all library to scan

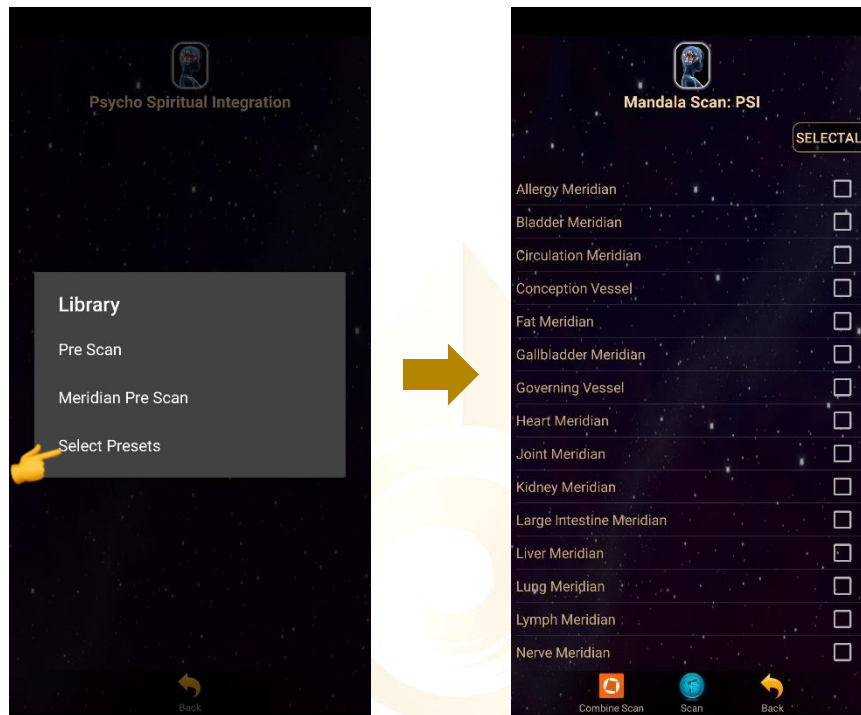
Select specific library to scan

**Combine Scan:**  
Combine all selected libraries in one list to scan. The scan results will show in only one preset library. (Fast. For general.)

**Scan – Multiple Scan:**  
Scan all selected libraries one by one. The scan results will show in separate preset library. (take longer time. More accurate.)

## 6.2.2 Select Presets - Manually Select Specific Library to Scan

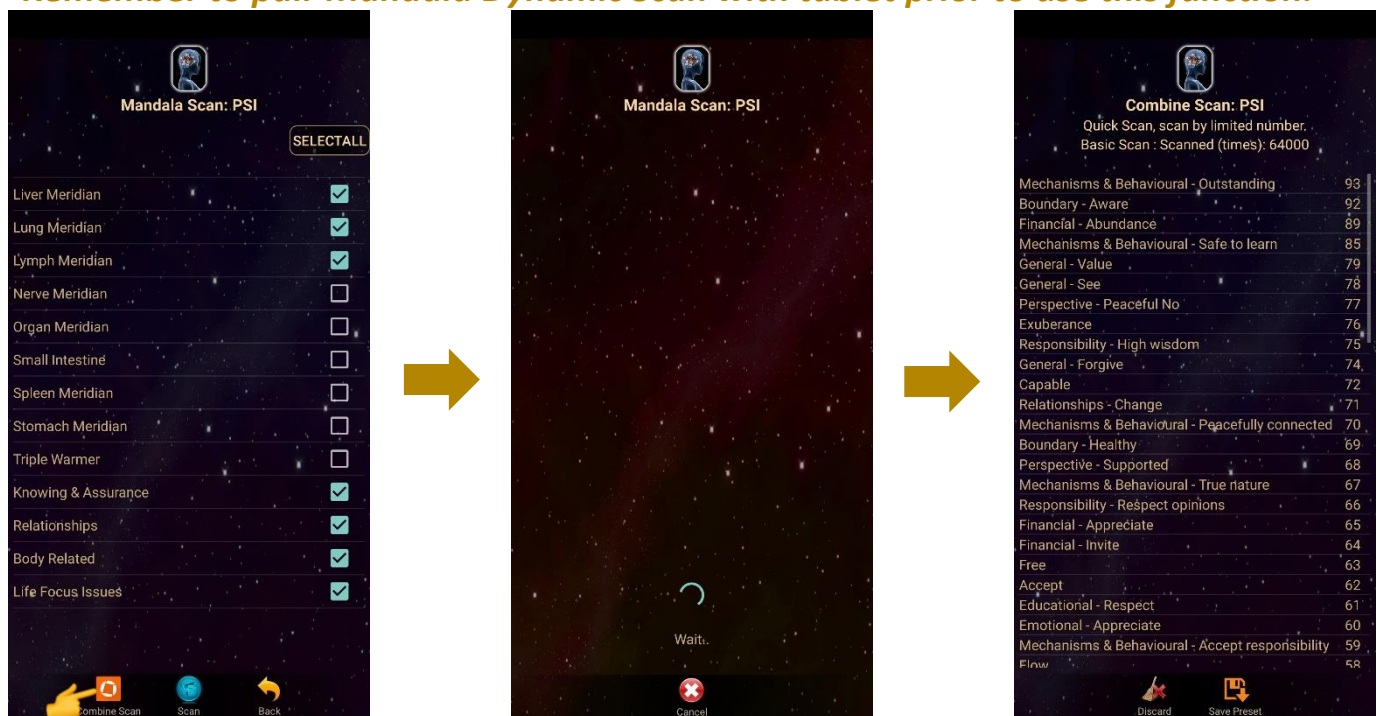
In this mode, user can manually select libraries to scan.



## 6.2.3 Combine Scan

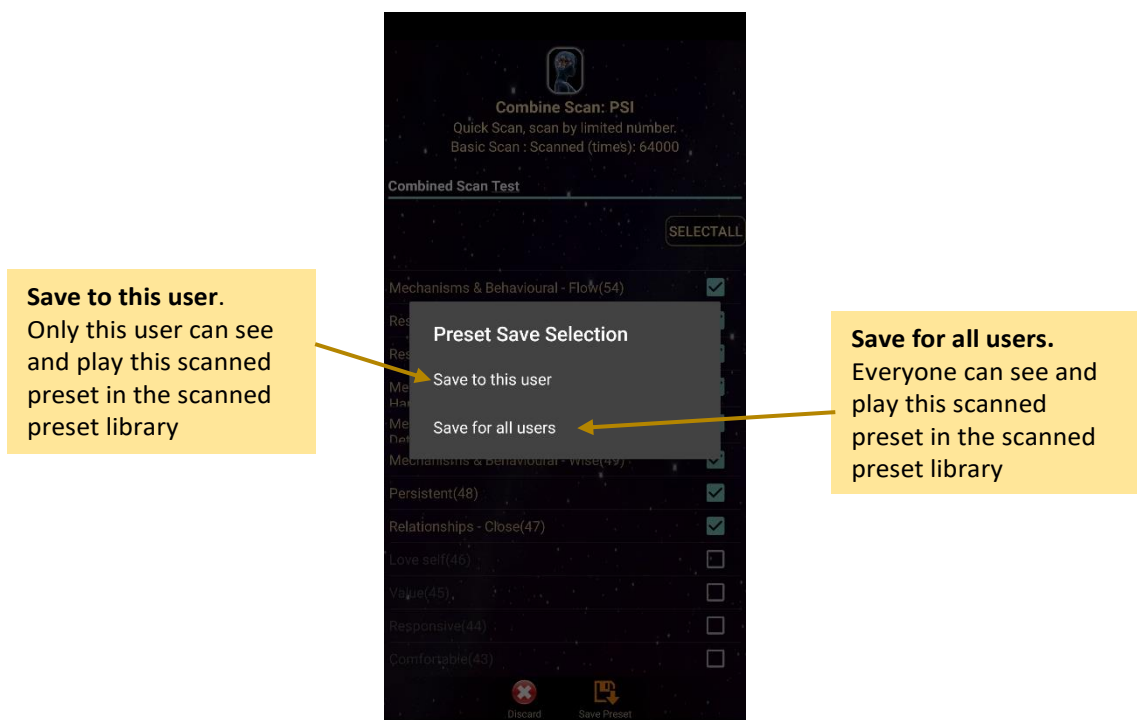
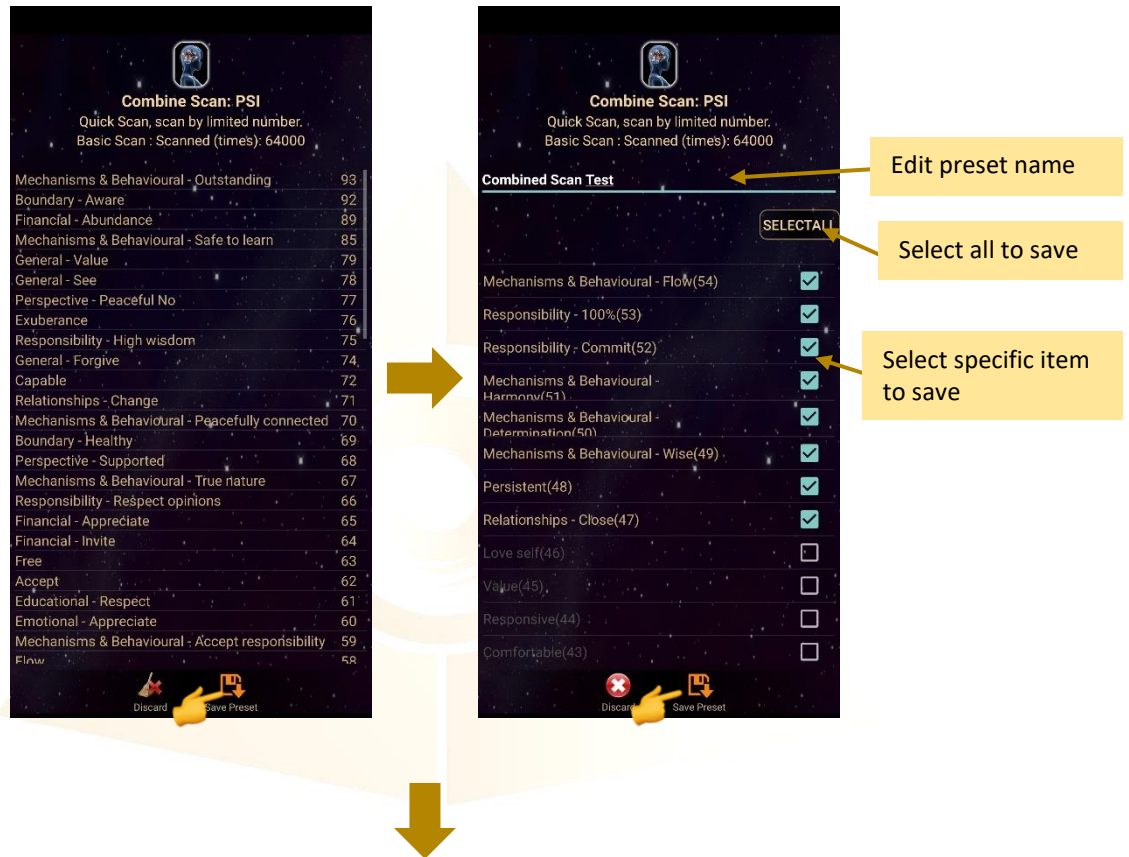
Select all library or specific library to scan and tab on the **Combine Scan**.

**\* Remember to pair Mandala Dynamic Scan with tablet prior to use this function.**



### Create Scanned Preset from Combine Scan Result:

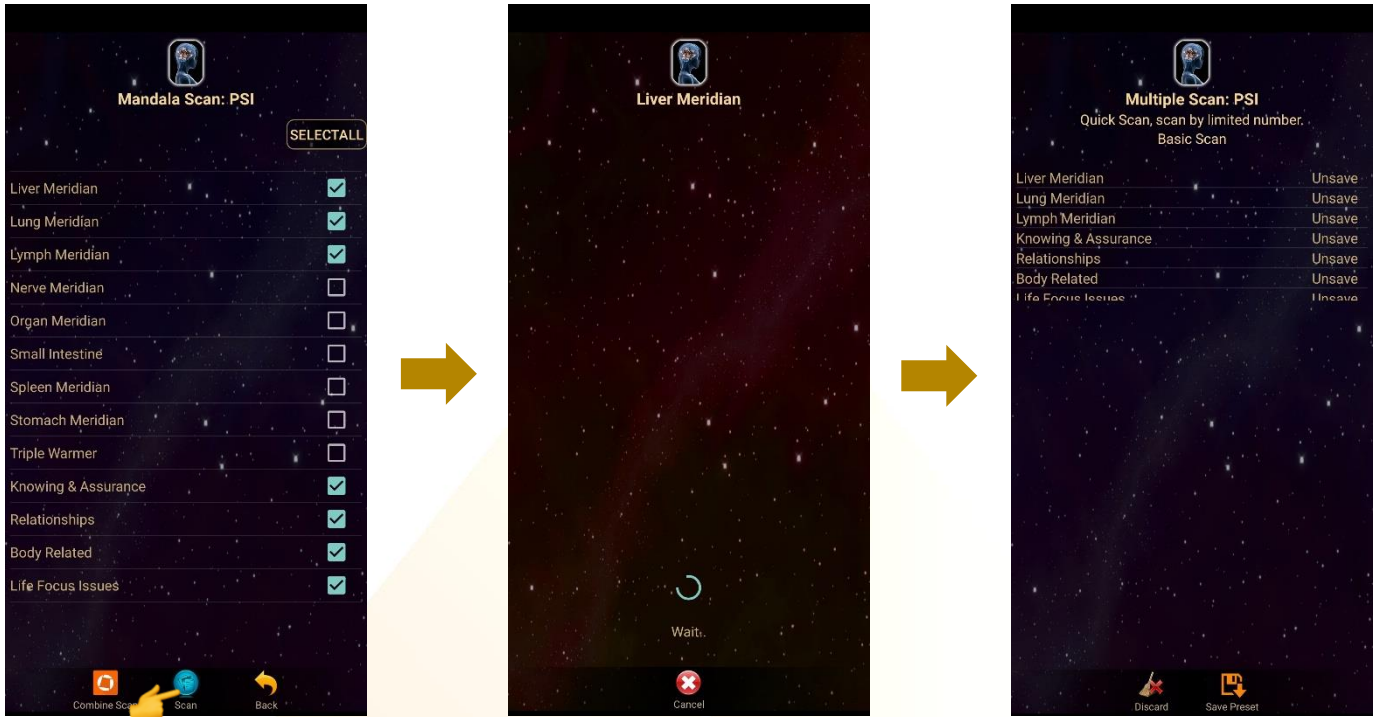
The scan results will show after the scan is completed. Then, tab on **Save Preset**. Select the item you wish to save and tab on **Save Preset** again to save it into the Scanned Preset library.



### 6.2.4 Multiple Scan

Select all library or specific library to scan and tab on the **Scan**.

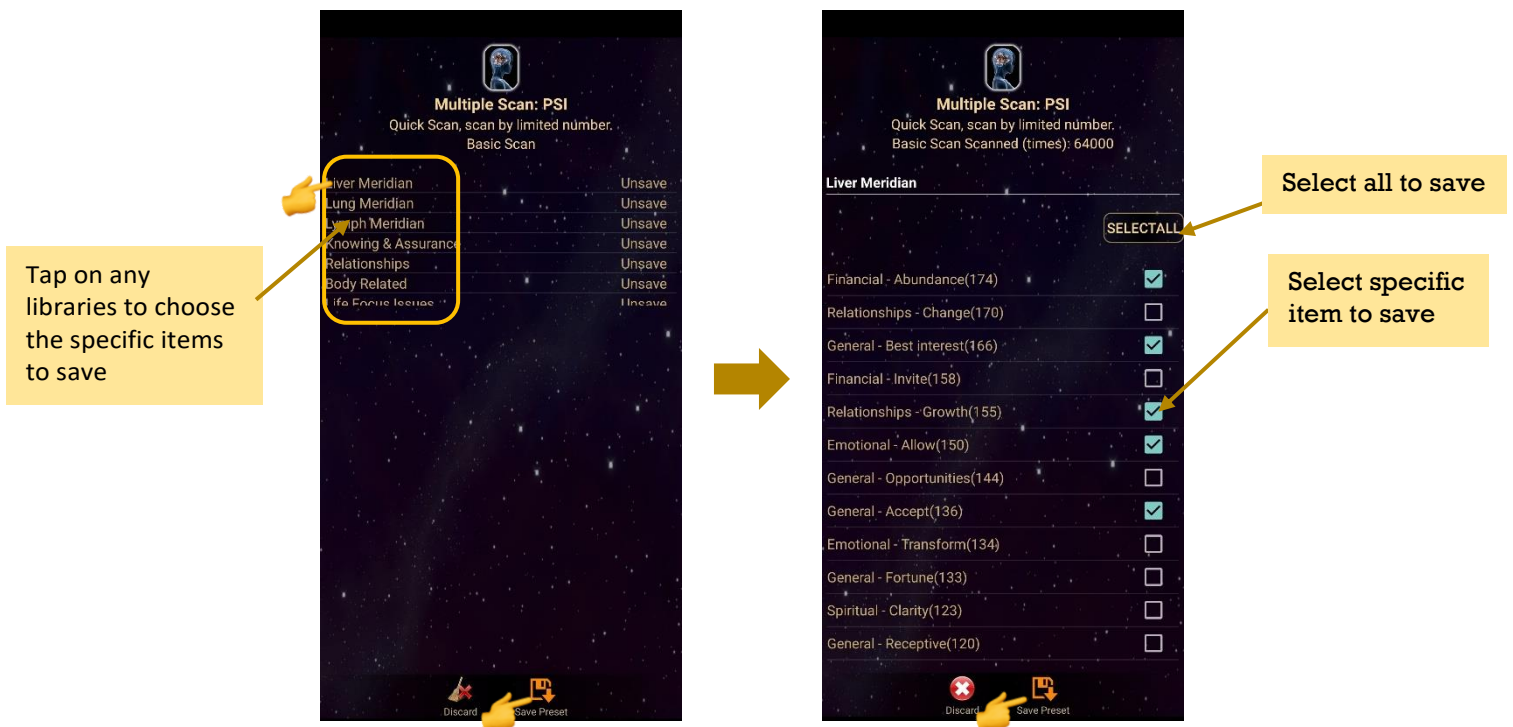
*\* Remember to pair Mandala Dynamic Scan with tablet prior to use this function.*



#### Create Scanned Preset from Multiple Scan Result:

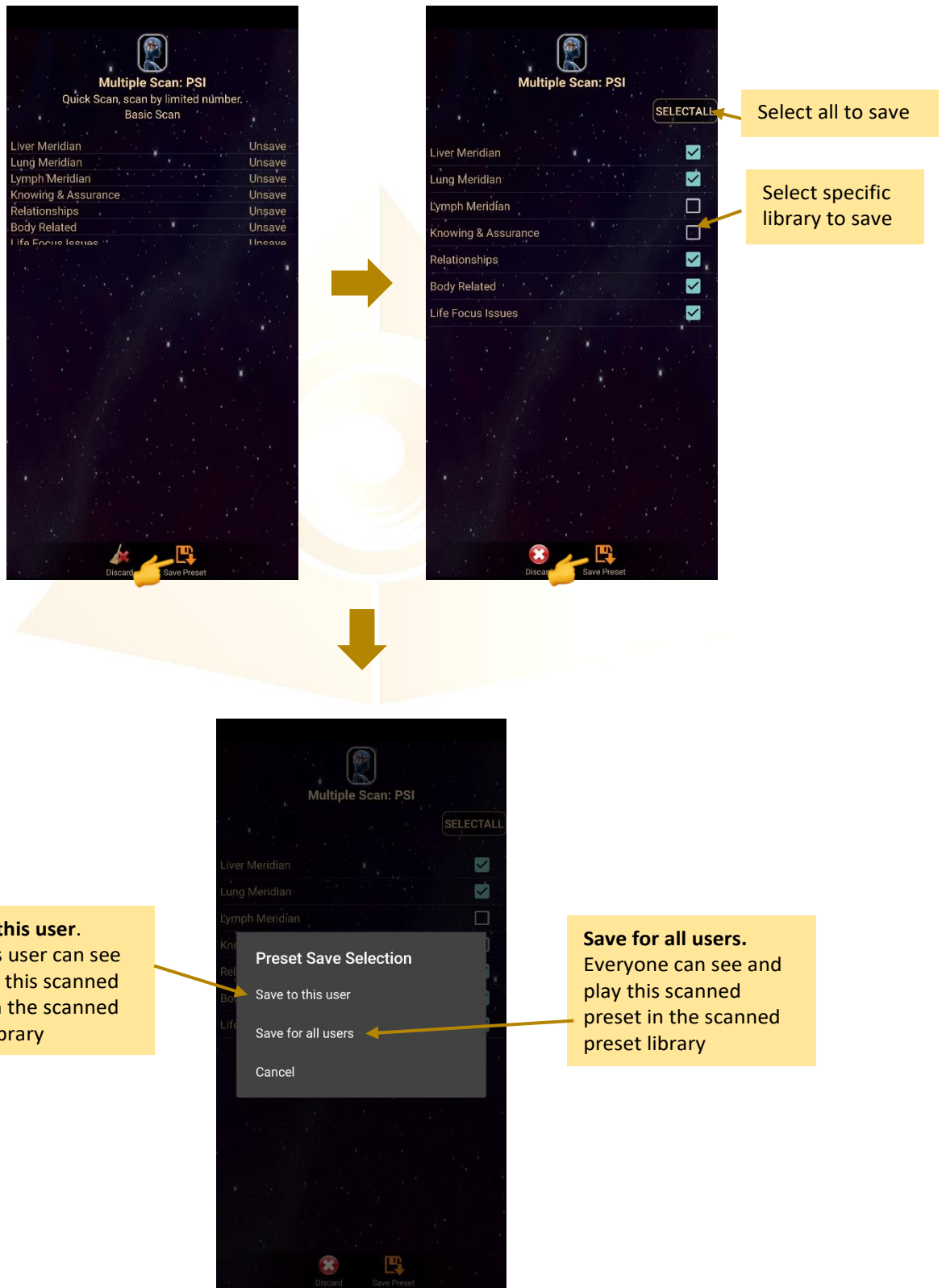
The scan results will show after the scan is completed.

##### I. Choose specific item in the library to save:

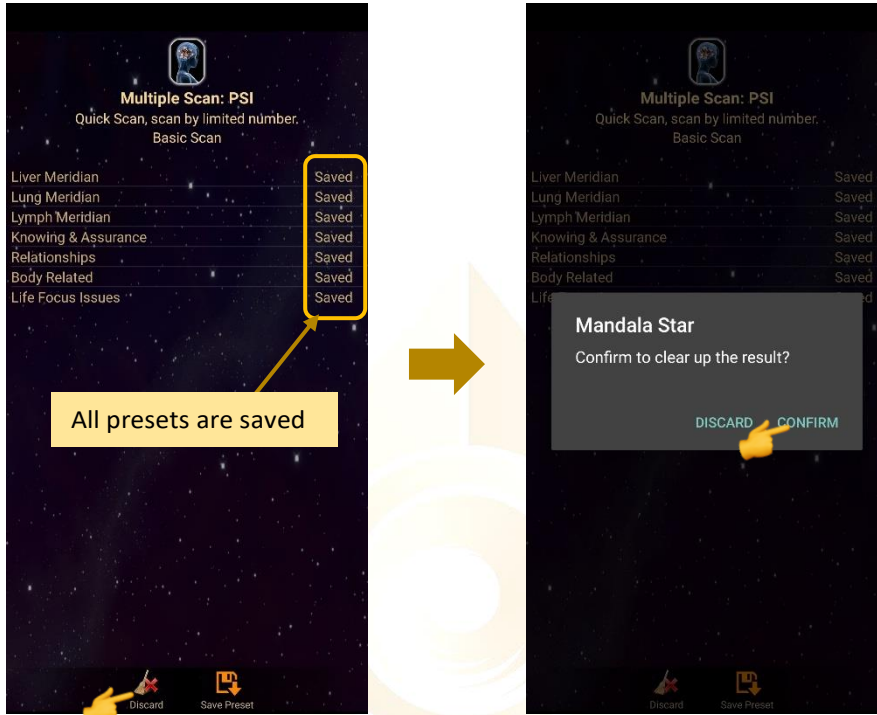


**II. Choose specific libraries to save:**

In this save method, all positive affirmations/items in each chosen library will be saved including insignificant items (grey colour items).

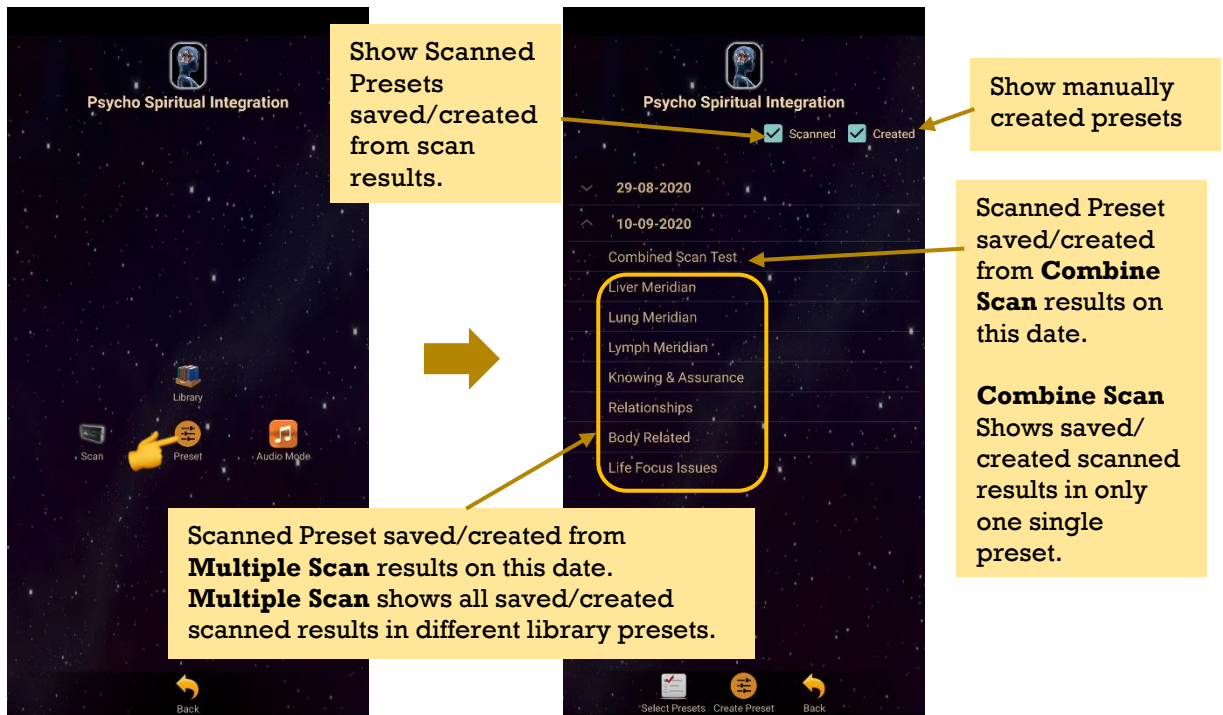


When the presets are saved, tab on **Discard** and select **Confirm** to go back to **Mandala PSI Home Page**.



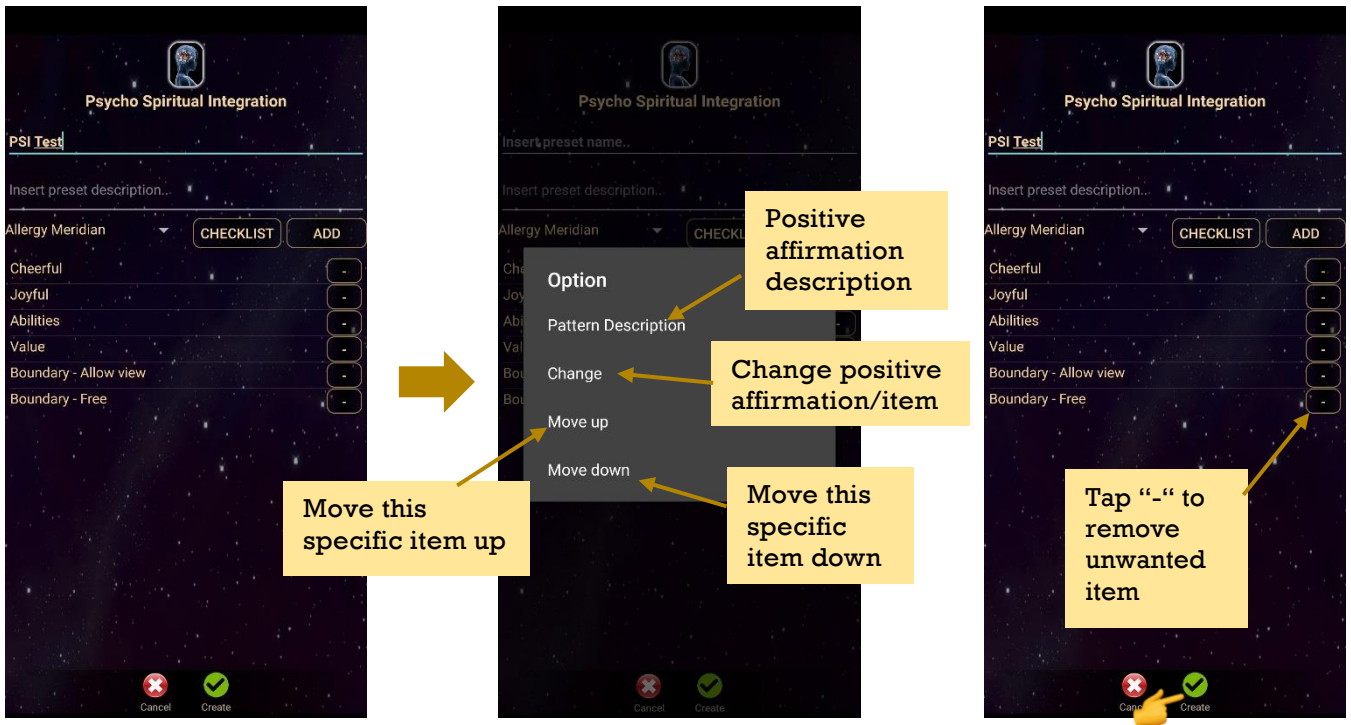
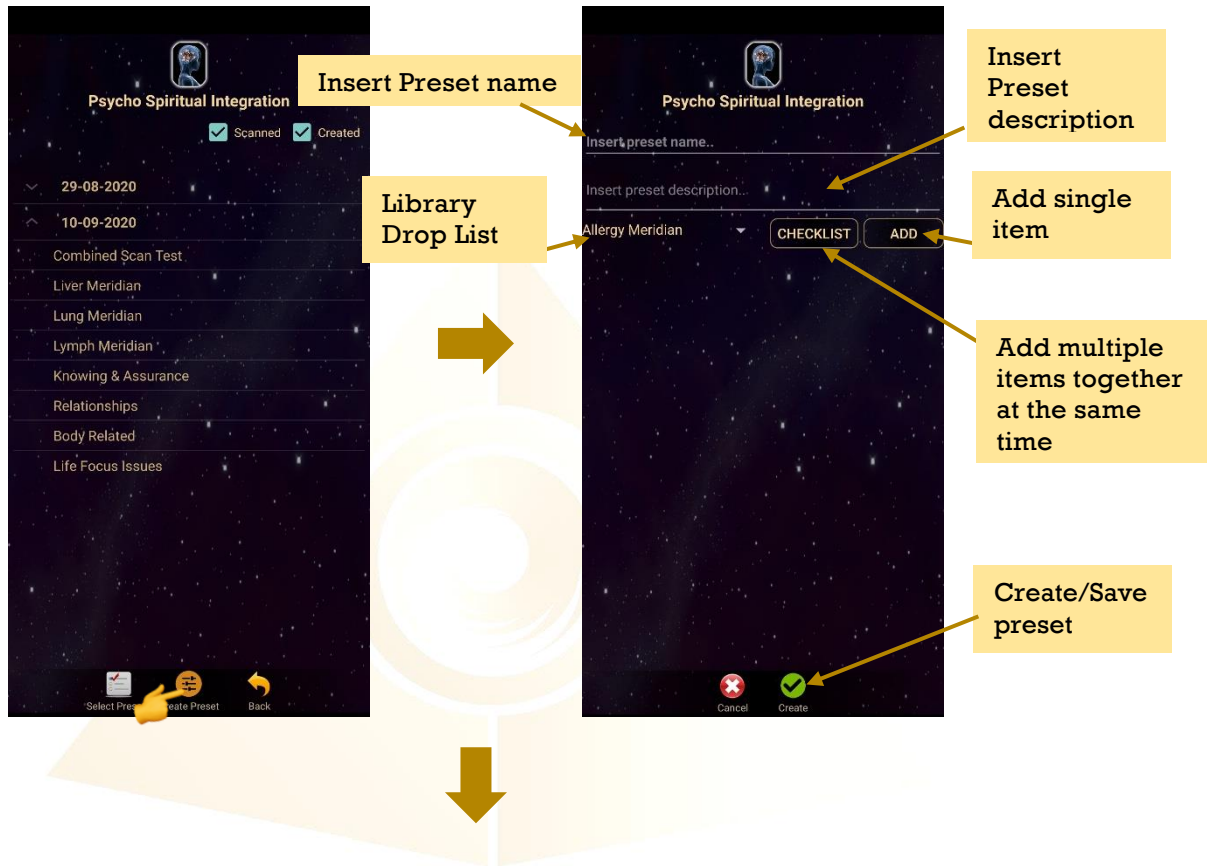
### 6.3 Preset

Tap on Preset and it will bring you to Preset Home Page.



### 6.3.1 Create Preset

User can manually create/customize their own presets. When user is done with the positive affirmation preset setup, tap on **Create** to save it.

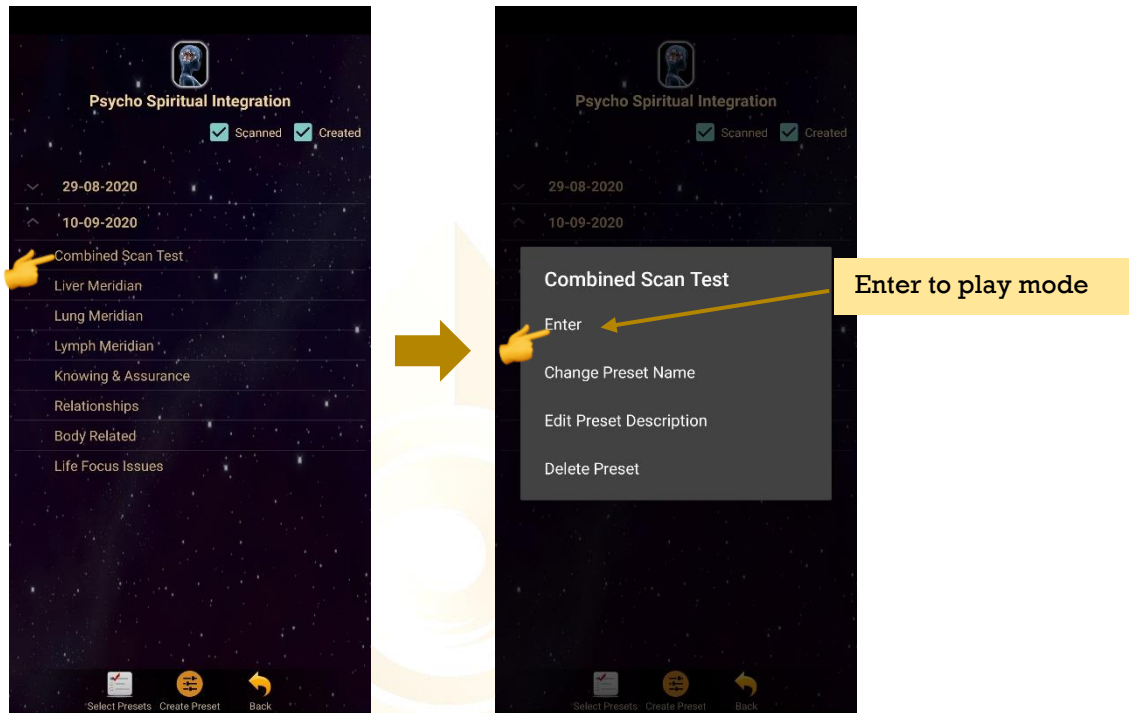




### 6.3.2 Preset Play Mode

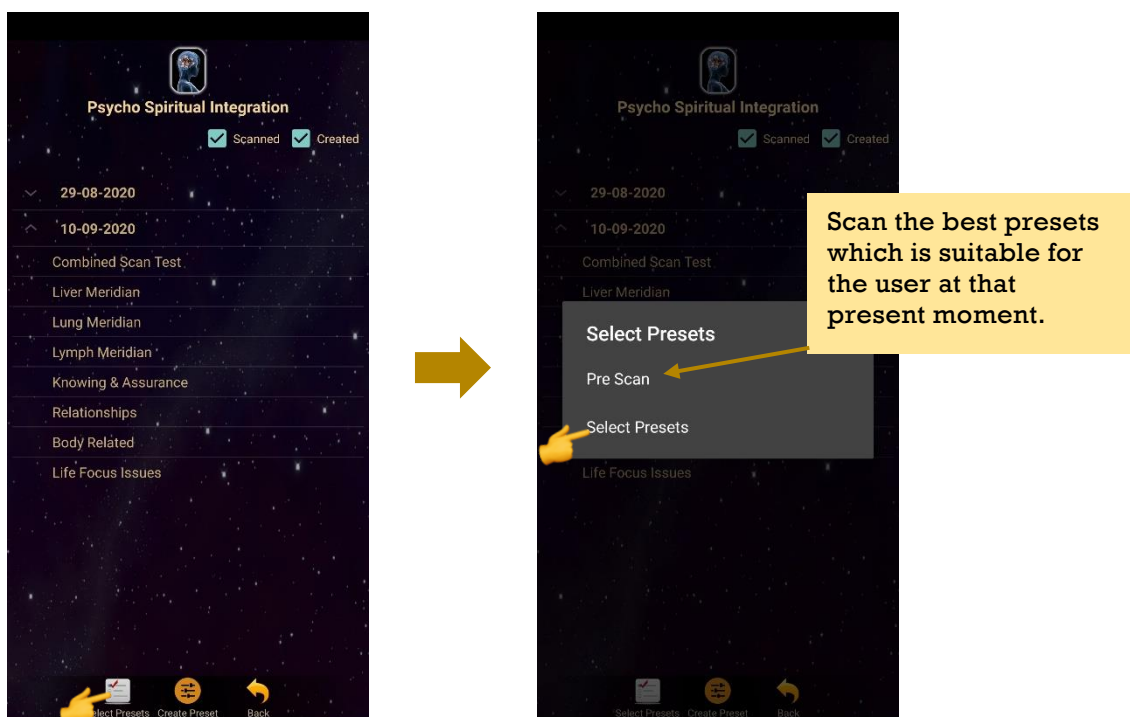
#### a) Play Single Preset:

Tap on any preset in the Preset Home Page you wish to play. Then, tap on **Enter** to enter to **Play Mode**.



#### b) Play Multiple Presets:

Tap on **Select Presets** to create a playlist to play together. User can select presets from **Scanned** presets or **Created** Presets.



**All Scanned Presets, manually Created Presets, will show in the same list**

**Select presets to create playlist**

**Report: Create a report and send it to yourself or your client via email.**

**Tap Play to enter to play mode**

**Tap Delete Preset to remove unwanted preset.**

SELECT ALL

Test	Selection
Test	<input type="checkbox"/>
Combined Scan Test	<input type="checkbox"/>
Liver Meridian	<input checked="" type="checkbox"/>
Lung Meridian	<input checked="" type="checkbox"/>
Lymph Meridian	<input type="checkbox"/>
Knowing & Assurance	<input checked="" type="checkbox"/>
Relationships	<input checked="" type="checkbox"/>
Body Related	<input checked="" type="checkbox"/>
Life Focus Issues	<input checked="" type="checkbox"/>

Back Play Report Delete Preset

**c) Play Mode:**  
Tap play to play the created playlist.

**Tick Repeat to repeat playlist/Looping**

**Tick Burst to set the numbers of repeat/loop.**

**In this example the burst is set to 3. This means the playlist will repeat 3 times then stop.**

**Go back to previous page if you wish to recreate the playlist.**

**Reset playlist**

Repeat  Burst  3

I appreciate the abundance I already have and welcome further abundance in my life. I am open to others changing in beneficial ways. I allow others the right to choose their changes. I act in my own best interest. I am open to having a new experiences. I invite and accept good fortune in my life. I welcome beneficial changes and growth in my relationships. I experience my emotions and allow them to change. Challenges are opportunities for me to grow and become stronger. I accept good fortune. I choose to be happy when I have to change - even transform myself. I welcome good fortune. I choose to see good and evil clearly. I appreciate the gift of discernment in my life. I am receptive to beneficial ideas and opportunities. I choose to be in the adapted and changed process with my pleasure. I easily move forward. I am open to spiritually changes in beneficial ways. I welcome abundance into my life. I am open to...

Back Reset Play

### 6.3.3 Report

User can create a report and send it to themselves or send it to their client via email.

**Insert email address**

From: ckpang87@gmail.com

To: |

Psycho Spiritual Integration Session Report: LIGHT MANDALAS

Psycho Spiritual Integration Session Report

Reporting Date: 12-09-2020 14:03

Name: LIGHT MANDALAS  
Email:  
Telephone No.:

--Liver Meridian--

1. Financial - Abundance  
Issue: I have never had enough in the past and will likely never have enough in the future.  
Affirmation: I appreciate the abundance I

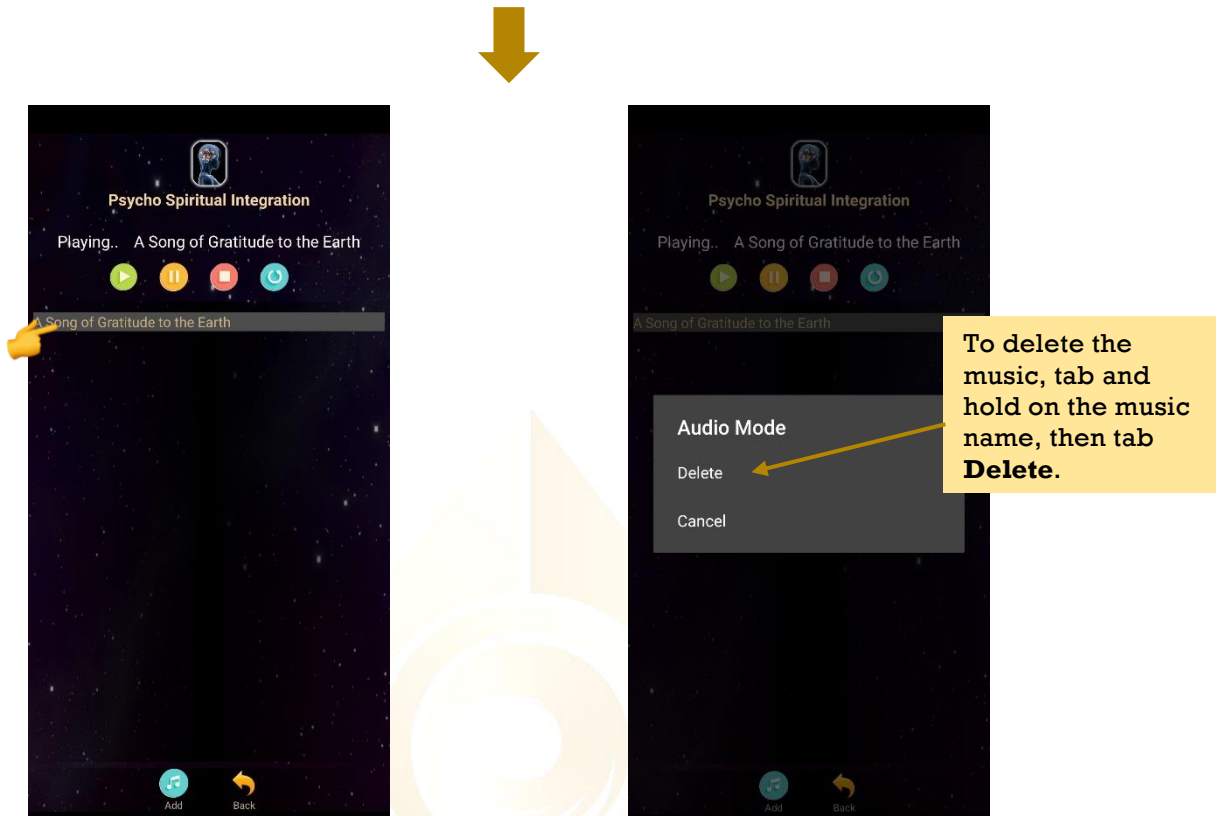
### 6.4 Audio Mode

Tap on **Audio Mode**, it will turn to **Audio Mode Home Page**. Tap on **Add** to add in music which you wish to play, then tap on the music name to play it.

**Music Repeat Setting:**

- No Repeat
- Looping. Continue to play next music.
- Repeating playing the same music

**PLAY PAUSE STOP**



When the music is played, user can go to **Preset Library** to play preset.

**\* The PSI healing will be much more efficient when combine with headset and soft relax background music as it will help the user to feel more relax therefore allow their subconscious to easily accept the positive affirmation – subconscious reprogramming.**

**Shall there be any inquiry, please contact us for further support.**

**Light Mandalas Co., Ltd. (Thailand Headquarters):**

- **Light Mandalas Website:** [www.light-mandalas.com](http://www.light-mandalas.com)
- **Official:** [info@light-mandalas.com](mailto:info@light-mandalas.com)
- **WeChat Support ID:** tianyuan0336,
- **Technical Support Email:** [chatchai@light-mandalas.com](mailto:chatchai@light-mandalas.com)
- **Training Support Email:** [m.maychell@light-mandalas.com](mailto:m.maychell@light-mandalas.com)

**Local agents contacts:**

- **Japan:** [japan@light-mandalas.com](mailto:japan@light-mandalas.com)
- **Taiwan:** [james.lu.bbl@gmail.com](mailto:james.lu.bbl@gmail.com), [acgangel650002@gmail.com](mailto:acgangel650002@gmail.com), [taiwan@light-mandalas.com](mailto:taiwan@light-mandalas.com)
- **Hong Kong:** [hongkong@light-mandalas.com](mailto:hongkong@light-mandalas.com)
- **Singapore:** [singapore@light-mandalas.com](mailto:singapore@light-mandalas.com)
- **Malaysia:** [malaysia@light-mandalas.com](mailto:malaysia@light-mandalas.com)
- **Hungary:** [hungary@light-mandalas.com](mailto:hungary@light-mandalas.com)
- **Switzerland, Germany, Austria, Netherlands:** [info@light-mandalas.ch](mailto:info@light-mandalas.ch)
- **France, Spain:** [france-spain@light-mandalas.com](mailto:france-spain@light-mandalas.com)
- **USA:** [usa@light-mandalas.com](mailto:usa@light-mandalas.com)
- **New Zealand, Australia:** [sally.yu@light-mandalas.com](mailto:sally.yu@light-mandalas.com)